

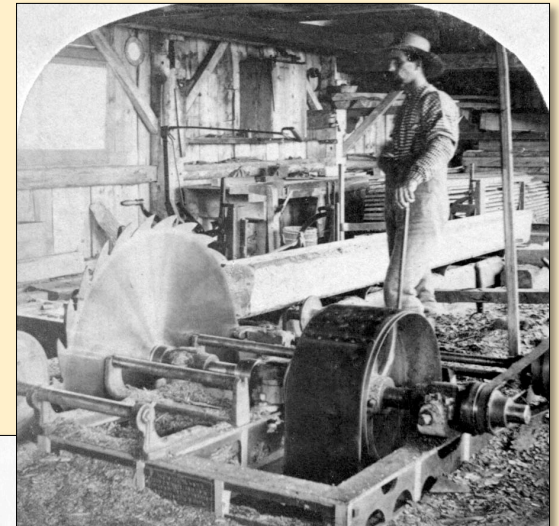
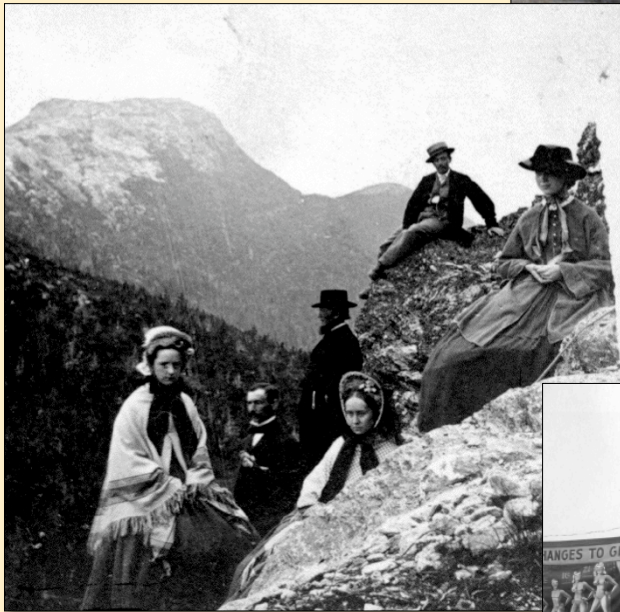
Using & Developing Historical Image Archives



→  **See Vermont as it was
200 YEARS AGO**
A digital archive of historic and current
photo pairs, educational resources, and more!  ←

Archive mission: to show the landscape of Vermont as it was and as it is...a geologic/geographic/historic emphasis

We use images as the “hook” to grab people’s attention.



Introductions

- Leaders
 - Paul Bierman (Background and Science)
 - Jamie Russell (Archive Management)
 - Christine Massey (Education/Outreach)
- Participants
 - Brief intro (Name, Affiliation, Interests)

Goal for today is to share what we have learned over the past decade; this short course is supported by an NSF DTS award (DUE-525046)

Schedule

- 11:30-12:00 – Coffee, computer set up
- 12:00-12:05 – Introductions
- 12:05-1:00 – About the Archive
- 1:05-2:00 – Working with Images
- 2:05-2:45 – Educational Resources
- 2:45-3:00 – Answering your Questions



**Now... >25,000
landscape
images
on-line**

24/7 access

Free to anyone

Custom web-ware

Web-based archive

Collected by students

Community involvement

National Science and Lintilhac Foundation funding

<http://uvm.edu/landscape>

LANDSCAPE CHANGE PROGRAM

See Vermont as it was 200 YEARS AGO
 A digital archive of historic and current photo pairs, educational resources, and more!

home search submit learn about members quick image search [Advanced Search](#) [Map/Keyword Search](#)

You searched for: **in a set, flood**. Here are the results:

Refine Search Distribution Image Details List Thumbnails

Now Showing Image 13 of 310

LS00920_000



LS00920_001



Railroad bridge in Bethel, VT

Town: [Bethel](#) **County:** [Windsor](#) **State:** Vermont

Date:
1927-11

Description:

The historic image shows floodwater carrying a railroad bridge away. People watch the damage near the terminus of the bridge. The vegetation and soils in the river's riparian zone are also be carried away by the floodwater. There are several buildings and part of a train visible in the town on the far side of the river. There is a partially forested hill in the background of the image.

New Railroad Bridge in Bethel

Town: [Bethel](#) **County:** [Windsor](#) **State:** Vermont

Date:
2003-10

Description:

The recent photograph shows the same bridge reconstructed. The slope on the far side of the river has partially reforested. Another bridge crosses above the tracks in the distance. Esther Munroe Swift writes on 2006-3-18: Unfortunately the photo captioned: New Railroad bridge in Bethel, VT, 2003-10 shows what is in fact only a temporary one. And as of now there is no date scheduled for building a permanent one



Main Street During the Flood of 1927



RICHFORD, VT.
NOV. 4th. 1927.



Town:

[Richford](#)

County:

[Franklin](#)

Date:

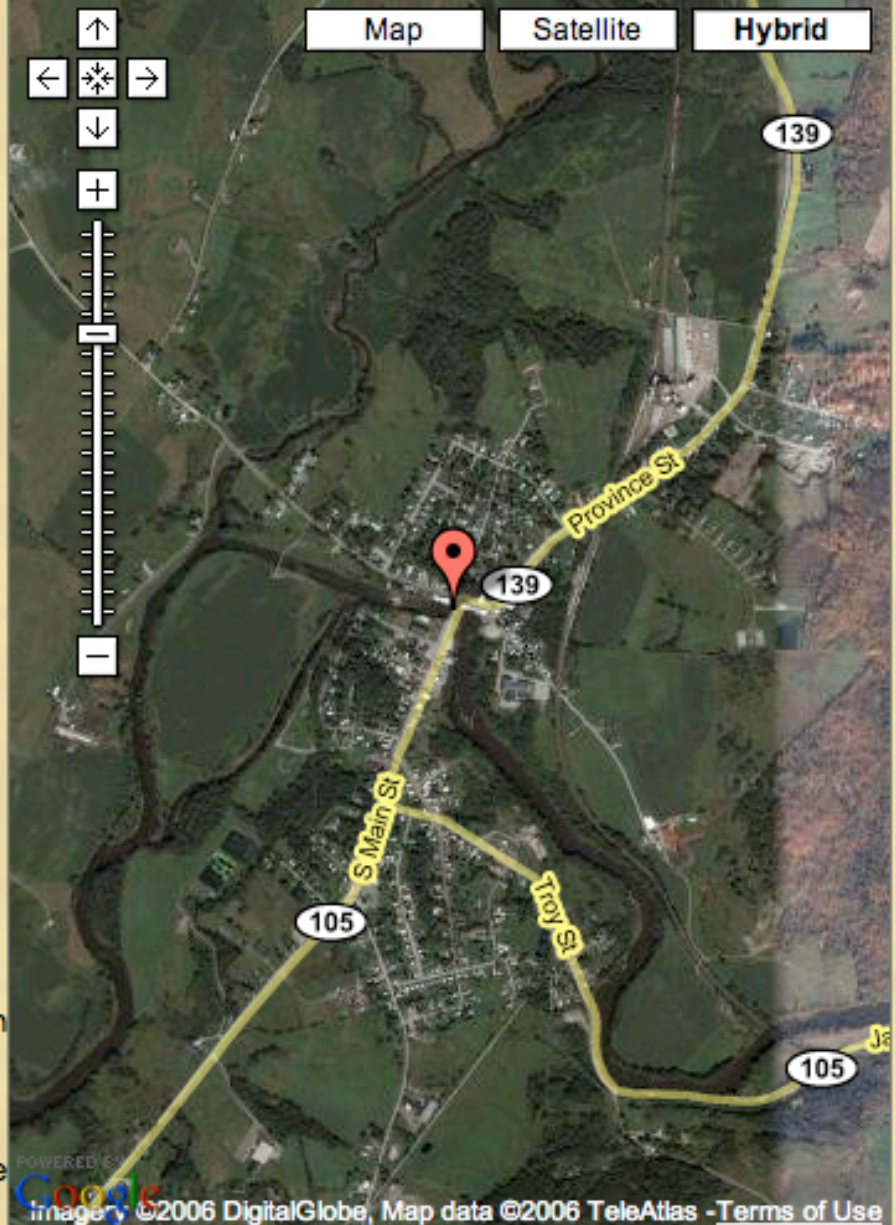
1927 (Nov. 4)

Description:

The historic image shows Main Street underwater during the 1927 flood. A brick building with a coca-cola advertisement painted on its side is being ripped apart in the lower right corner of the photograph. A utility pole with electric lines is being pulled into the floodwaters in the same area. Several other buildings in the foreground of the image are partially submerged in the rushing river water. Debris from ruined buildings has piled up alongside buildings on the right side of the street. There are people and cars parked along Main Street (where the road isn't

Google Map

Close



POWERED BY
Google
imagery ©2006 DigitalGlobe, Map data ©2006 TeleAtlas - Terms of Use

Searsburg Post Office, Summer



Town:

[Searsburg](#)

County:

[Bennington](#)

Date:

No Date

Description:

The historic image shows two men in front of a small pieced-together-building. A handwritten sign on the building reads, "Don't call on Sunday." There are small benches with pots outside the building. Trees are visible behind the building. Please see other related images of the Searsburg Post Office in this database including LS001939. Esther Munroe Swift writes on 2005-4-1: The U.S. census for 1820 showed only 8 residents in Searsburg. In the next 50 years the population grew to over 300, but as Abby Hemenway's Gazetteer said "Searsburg is too elevated on the Green Mountains either for cultivation, population or wool growing." Searsburg got it first and only post office in 1833 when the population reached 100 and closed 100 years later in 1933 when the population had shrunk back to 100 again. It has not had a post office since then. The condition of the post office shown in this view is a sad portrait of the town's decline. N.B. In this image and another similar one the same man appears, as does a walking stick propped against the doorframe.

Comment on This Image

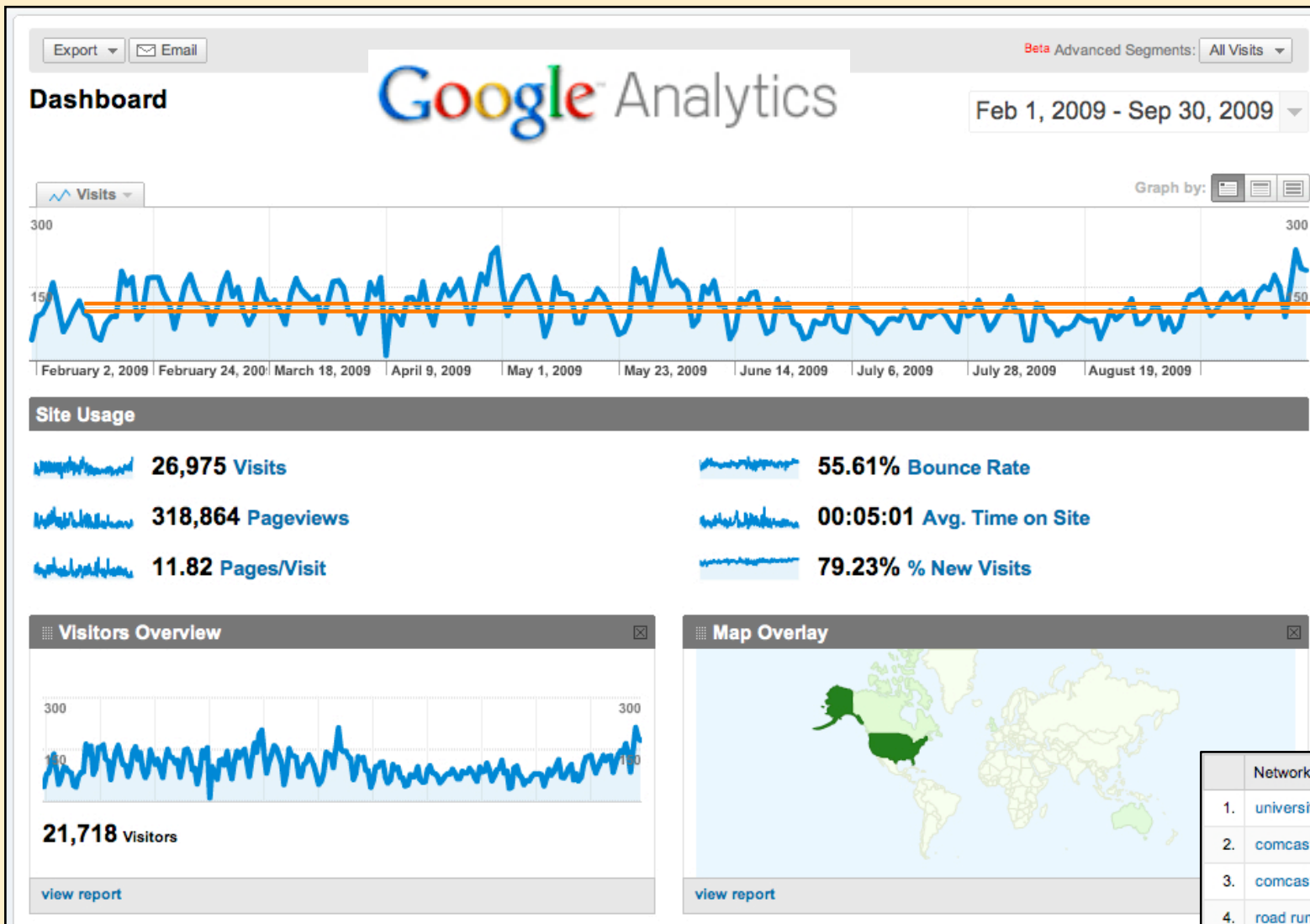
[Close](#)

Your Name:

E-mail address:

Comments:

You'll see your comment on this page as soon as we've reviewed it.



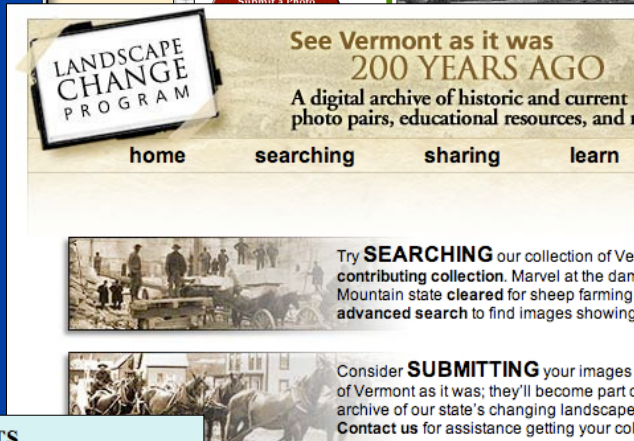
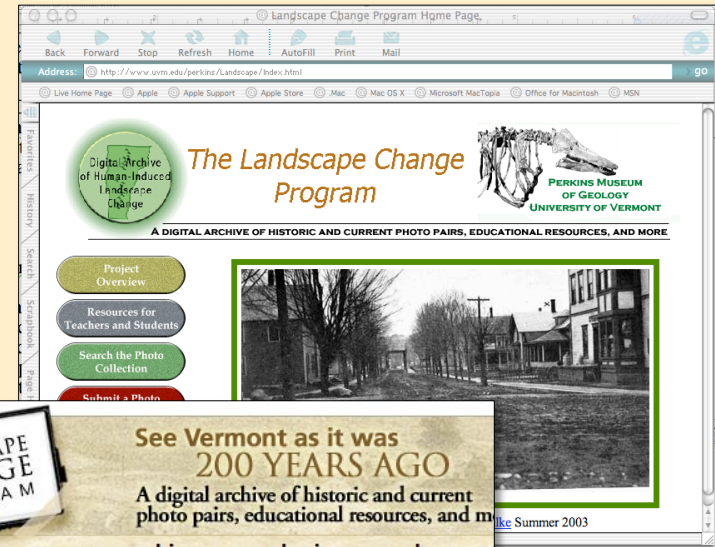
**About 140
visits
per day**



Network Location	
1.	university of vermont
2.	comcast cable communications holdings inc
3.	comcast cable communications inc.
4.	road runner holdco llc
5.	verizon internet services inc.
6.	fairpoint communications inc.
7.	green mountain access
8.	charter communications
9.	vermont telephone company inc.
10.	burlington telecom

**Seasonal, weekly cycles – School use?
Local usage, Saturday minima**

It's not always been this way!

Multiple user groups (students, faculty, community) evaluated mock-ups for function; we responded.



VERMONT LANDSCAPE CHANGE ARCHIVE SEARCH RESULTS	
(For Floods, in ALL Co. between the years 1700 to 2003)	
Total Records: 18	
	Former Road that is Now a Brook Clarendon, Rutland Co., 1927 (about) Special Collections of Bailey/Howe Library at UVM
	1927 Flood of the Winooski River Winooski, Chittenden Co., 1927 The Champlain Mill

Professional web design, common elements for look and feel

Images show well that the Vermont landscape is shaped by geologic forces

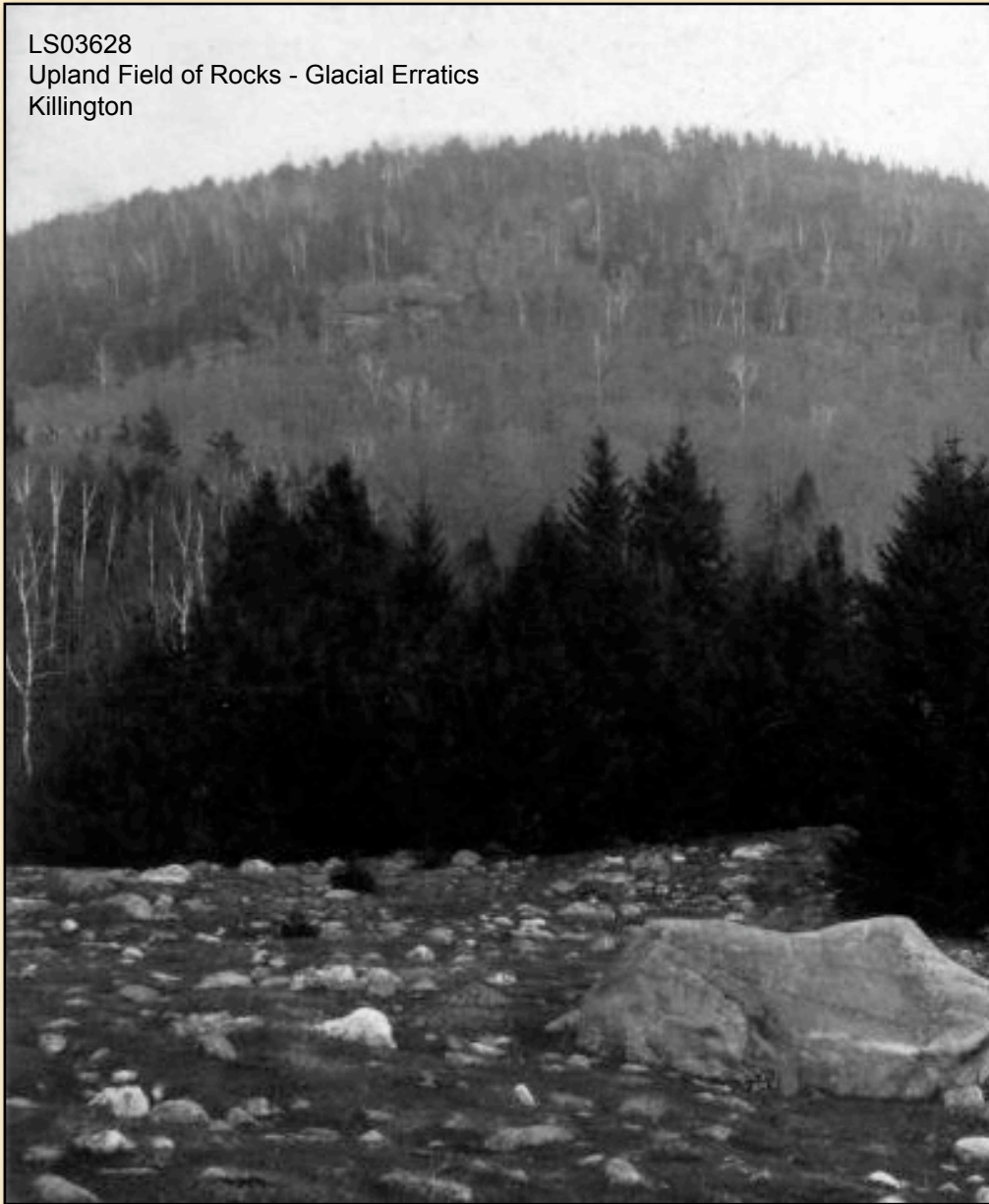


With forms molded by the flow of glacial
ice

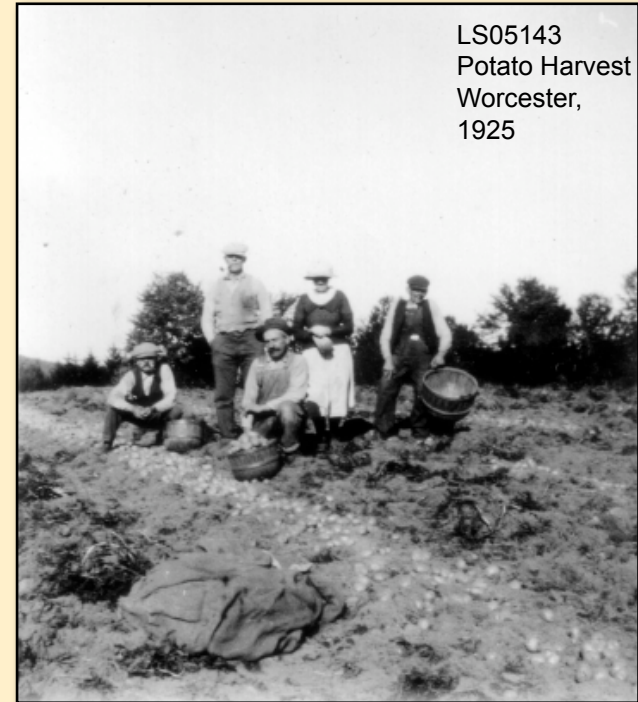
Shelburne Farms, 1927
LS10080

making farming a challenge....

LS03628
Upland Field of Rocks - Glacial Erratics
Killington



LS05143
Potato Harvest
Worcester,
1925



LS07056
Haying with buck rake
Bennington,
1949



There are glacial landscapes
that sometimes slip
away from us.



**Overview of landslide on
Riverside Avenue**

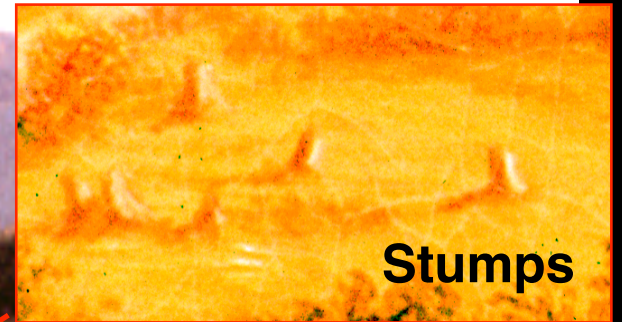
LS01781; Burlington, 1955

Mount Mansfield from Underhill, Vermont
Charles Heyde, c. 1855-65

Gully



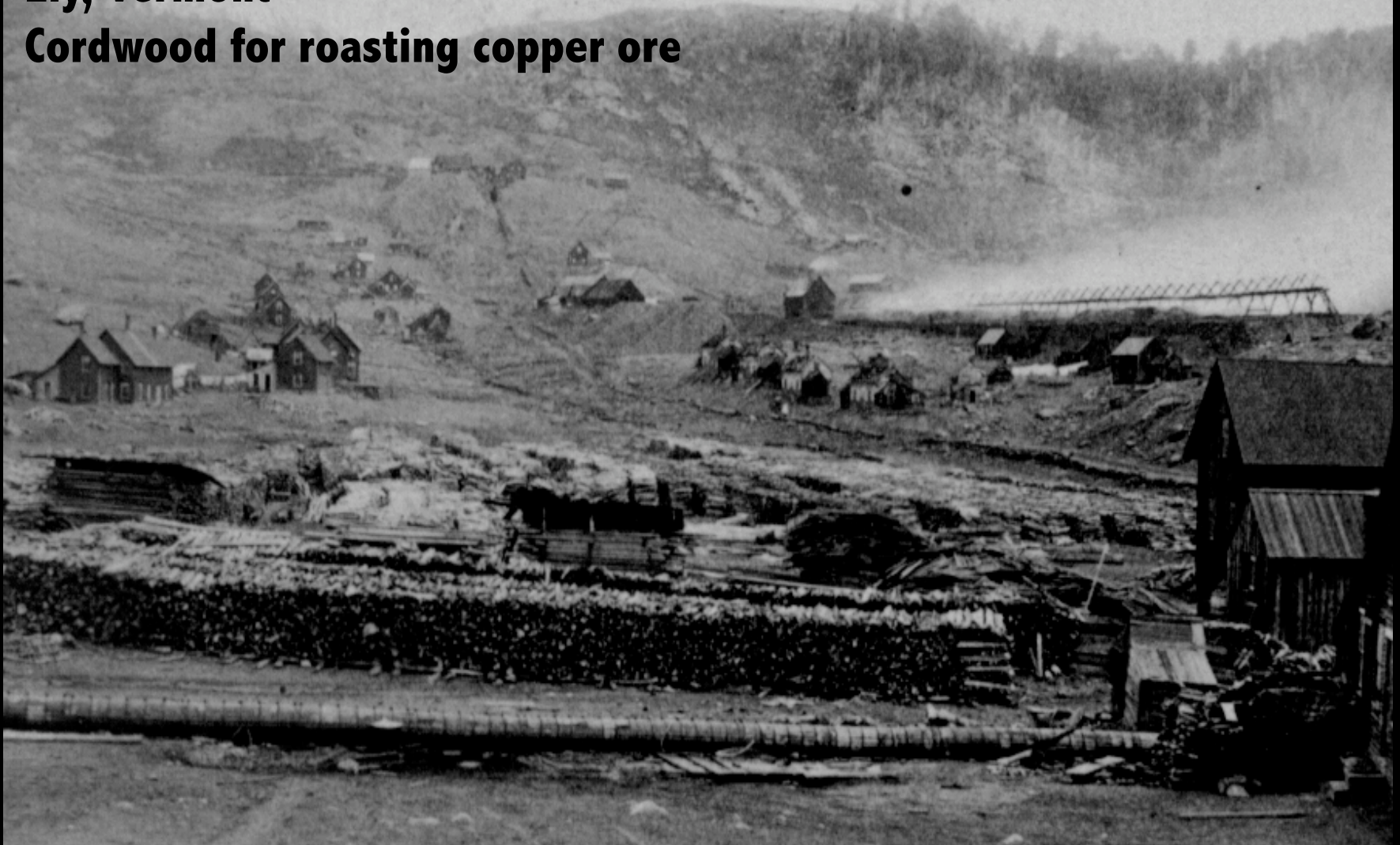
Stumps



Without trees and with roads, there is erosion.

Ely, Vermont

Cordwood for roasting copper ore



A lively but damaging copper industry ...



LS09524
Ice Jam
Hartford,
1908

The fall flood of 1927 still shapes Vermonters' perceptions.

LANDSCAPE CHANGE PROGRAM

See Vermont as it was
200 YEARS AGO
A digital archive of historic and current
photo pairs, educational resources, and more!

home search submit learn about members quick image search [Advanced Search](#) [Map/Keyword Search](#)

You searched for: **flood, with video files**. Here are the results:

Refine Search Distribution Image Details List Thumbnails

Now Showing Image 26 of 119

LS13421_000

Associated Documents [Close](#)

1. **Center Rutland - 1927 Flood Movie**
(Type: video; Format: video/quicktime) This is a clip from a movie about the 1927 Flood. This clip focuses on the area around Center Rutland.

1927 Flood Movie Screenshot: Center Rutland 2

Town: [Rutland](#) County: [Rutland](#) State: Vermont

Date: 1927-11

Description:
This image is a screenshot from a movie made using actual footage from the 1927 flood. This image is from a clip of the 1927 Flood Movie that begins with the caption "Center Rutland, Vt. The raging waters broke up the D. & H. Railroad's steel trestle." This image shows water rushing by what could be a large warehouse or depot associated with the D. & H. Railroad. This image shows the water descending into Center Rutland on the Otter River. Notice the broken railroad trestle on the left and a large pipe in the foreground.

ST. JOHNSBURY, VT, NOV 11, 1927 Pho. by The Jenks Studio

LS11413
Saying Goodbye to Bridge
St. Johnsbur, 1927

Center Rutland, Vt.

The raging waters broke
up the D. & H. Railroad's
steel trestle.

Snowroller, LS03955



This is 1941!

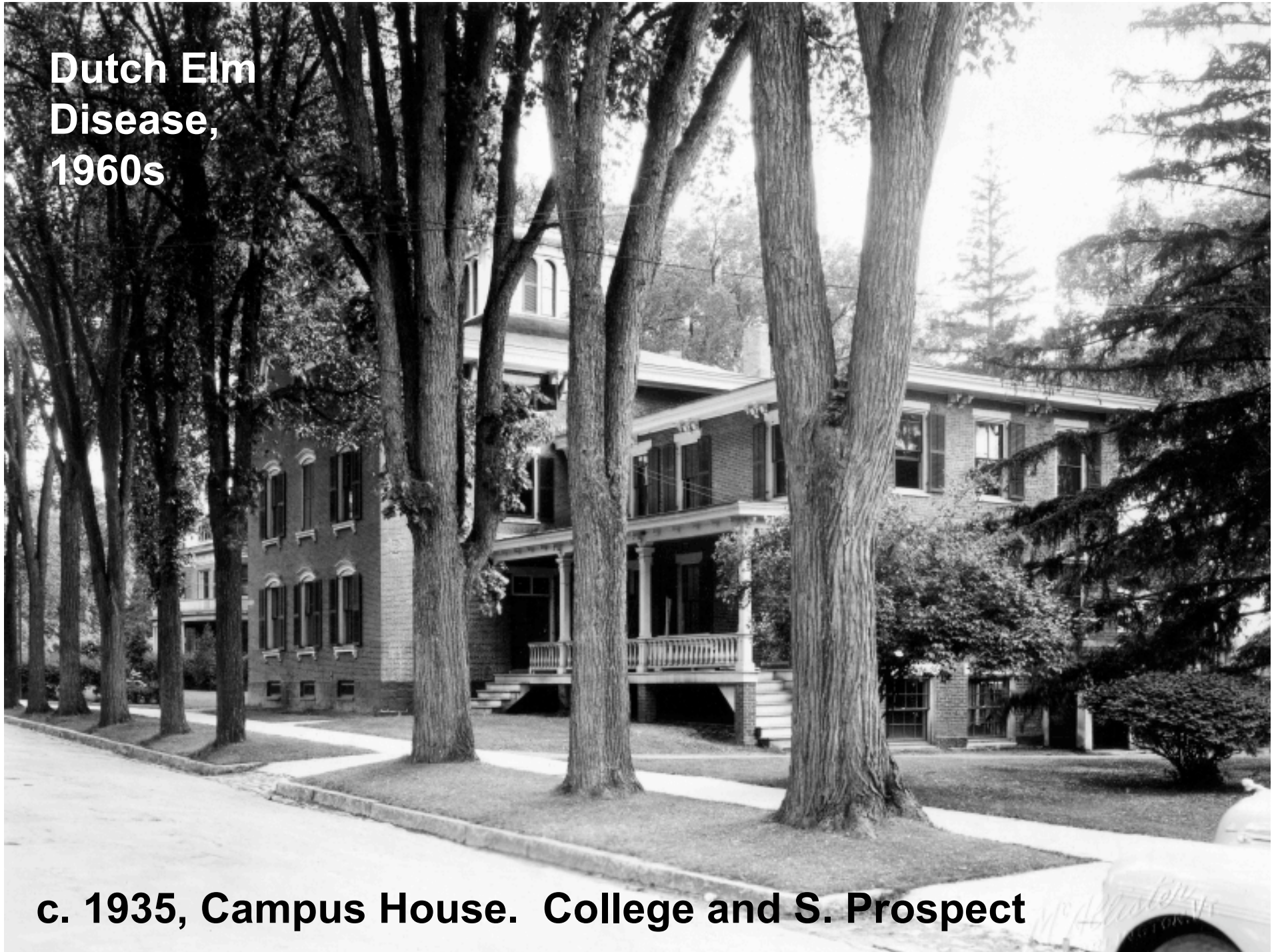
Somewhere in the northeast Kingdom snow is rolled by horses and yet not plowed

1958

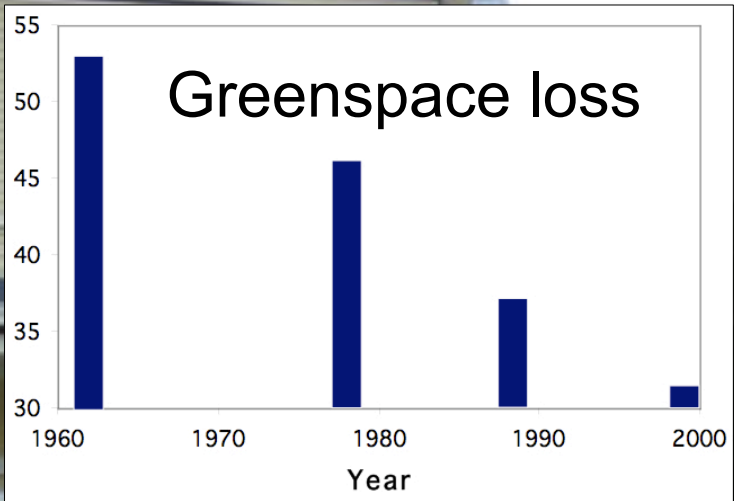
Only 17 years later, the Interstate Highway fundamentally changes the built landscape

LS6304

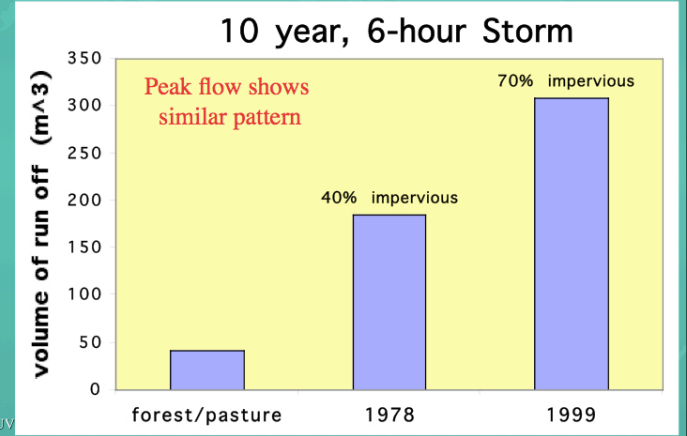
**Dutch Elm
Disease,
1960s**



c. 1935, Campus House. College and S. Prospect



GREEN SPACE LOSS HAS REAL EFFECTS ON CITY STORM SEWERS



2005

Student Interns are Authors



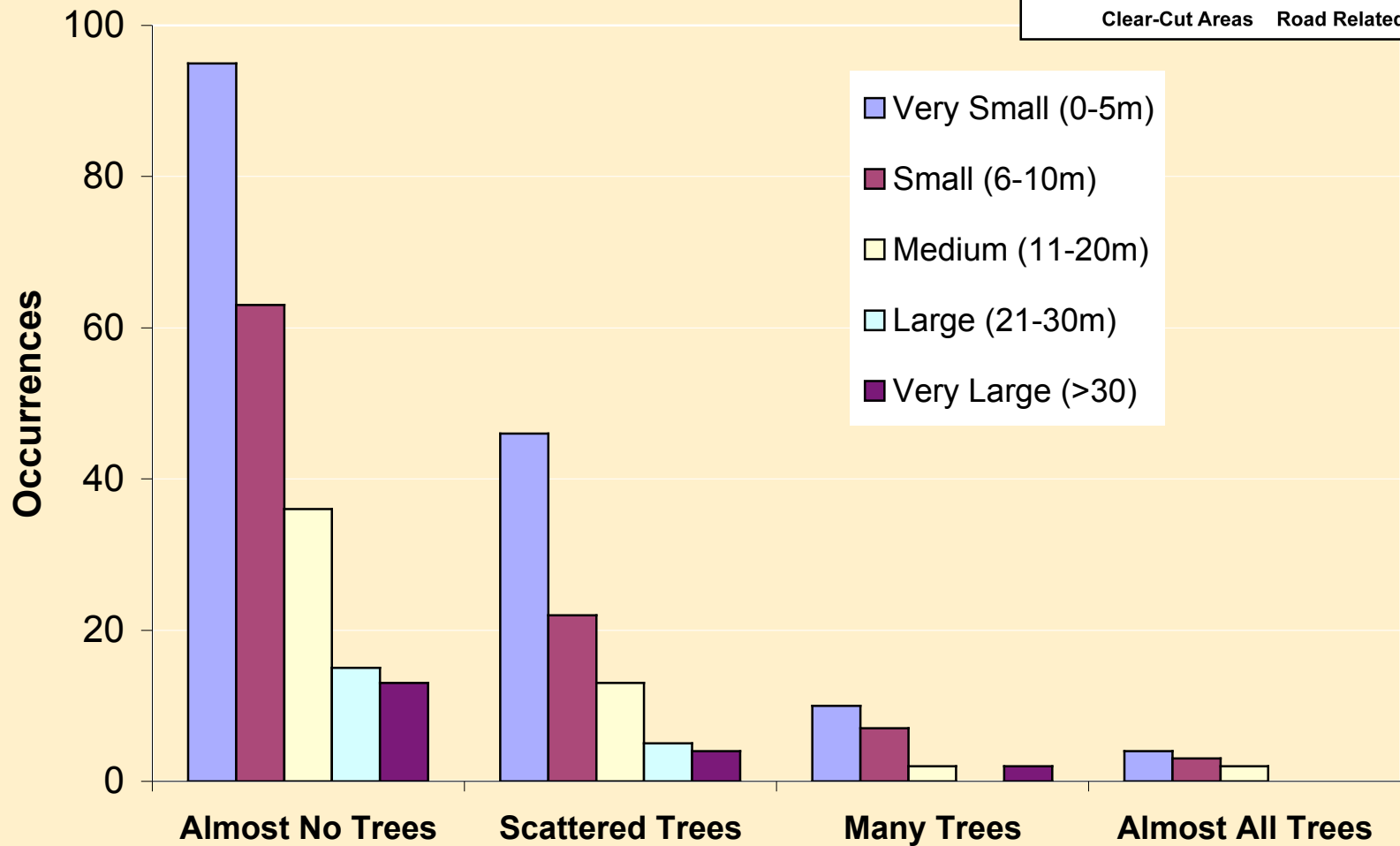
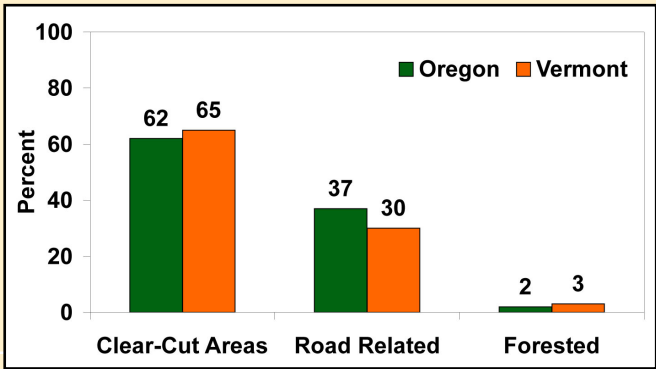
Presents methods and science findings using only 7000 images

Highgate Springs, Vermont 1870s



Bare landscapes erode!

Analysis of 342 images

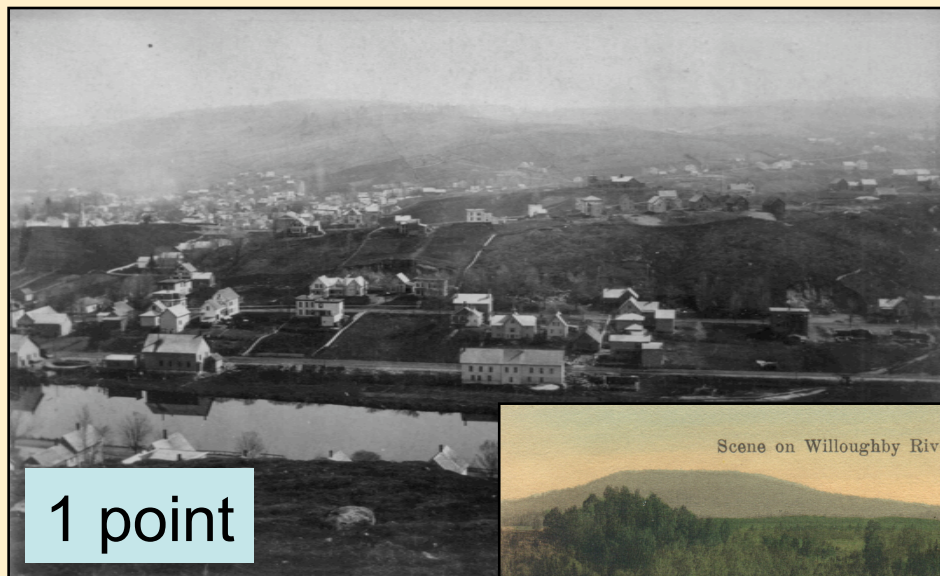


Images record active geologic processes and human/landscape interaction

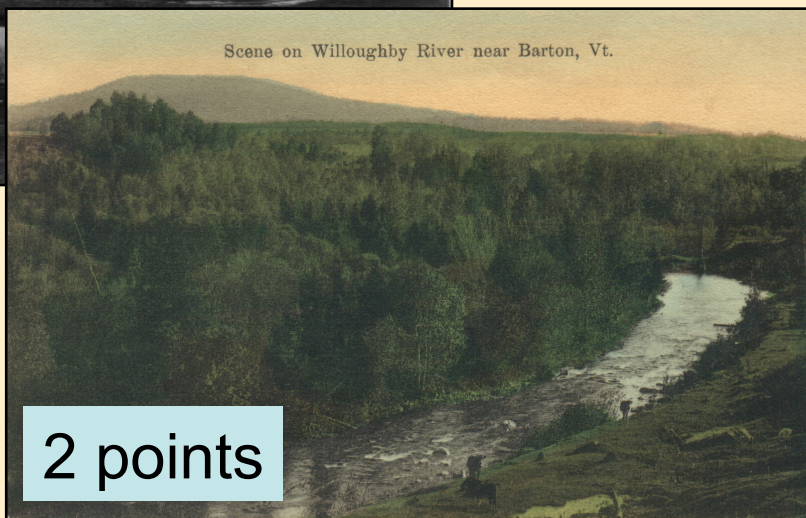


Alluvial Fans and gully erosion, Tunbridge, Vermont (LS07574)

Poor riparian buffer
no vegetation



1 point



Scene on Willoughby River near Barton, Vt.

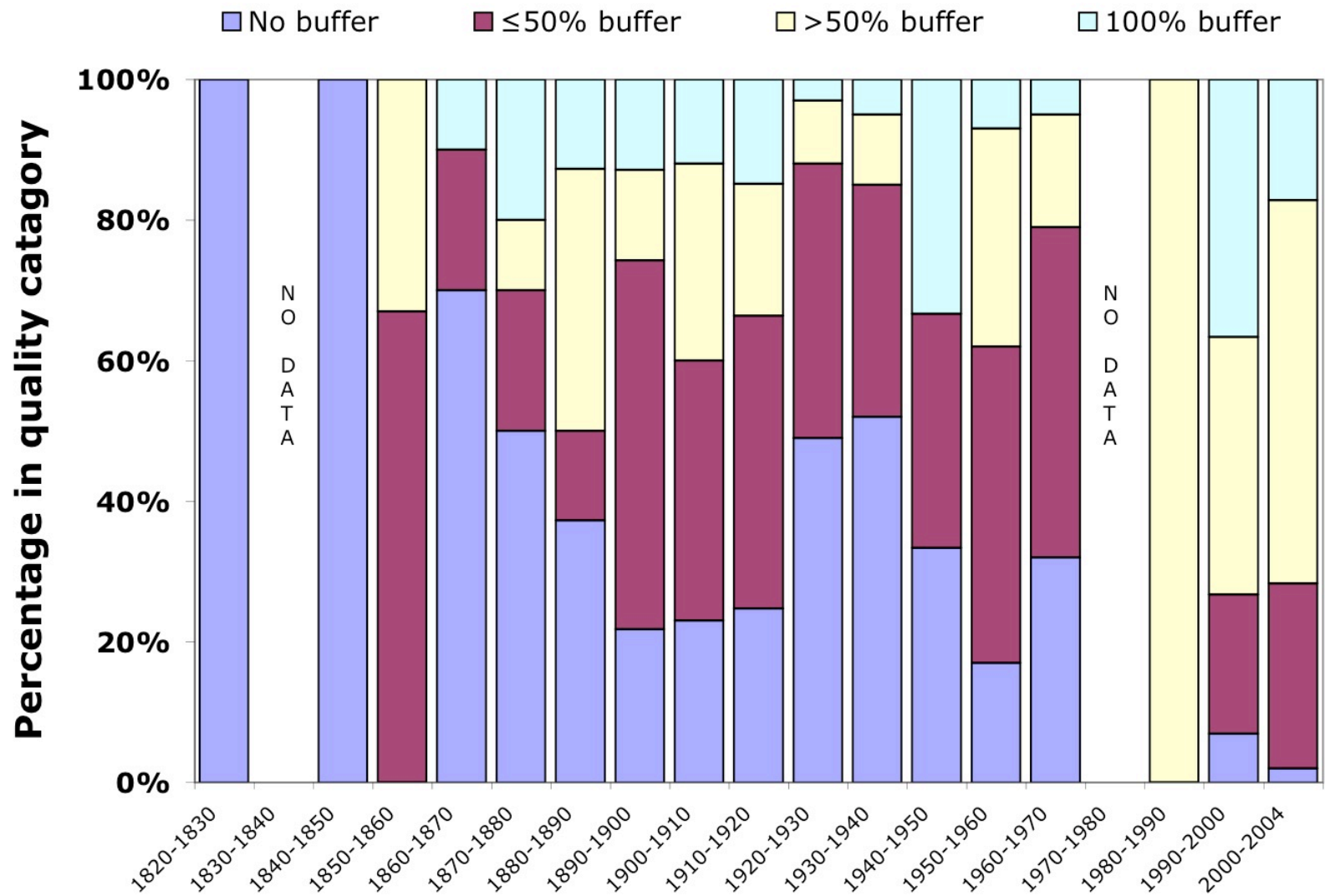
2 points

Full riparian buffer
all vegetation

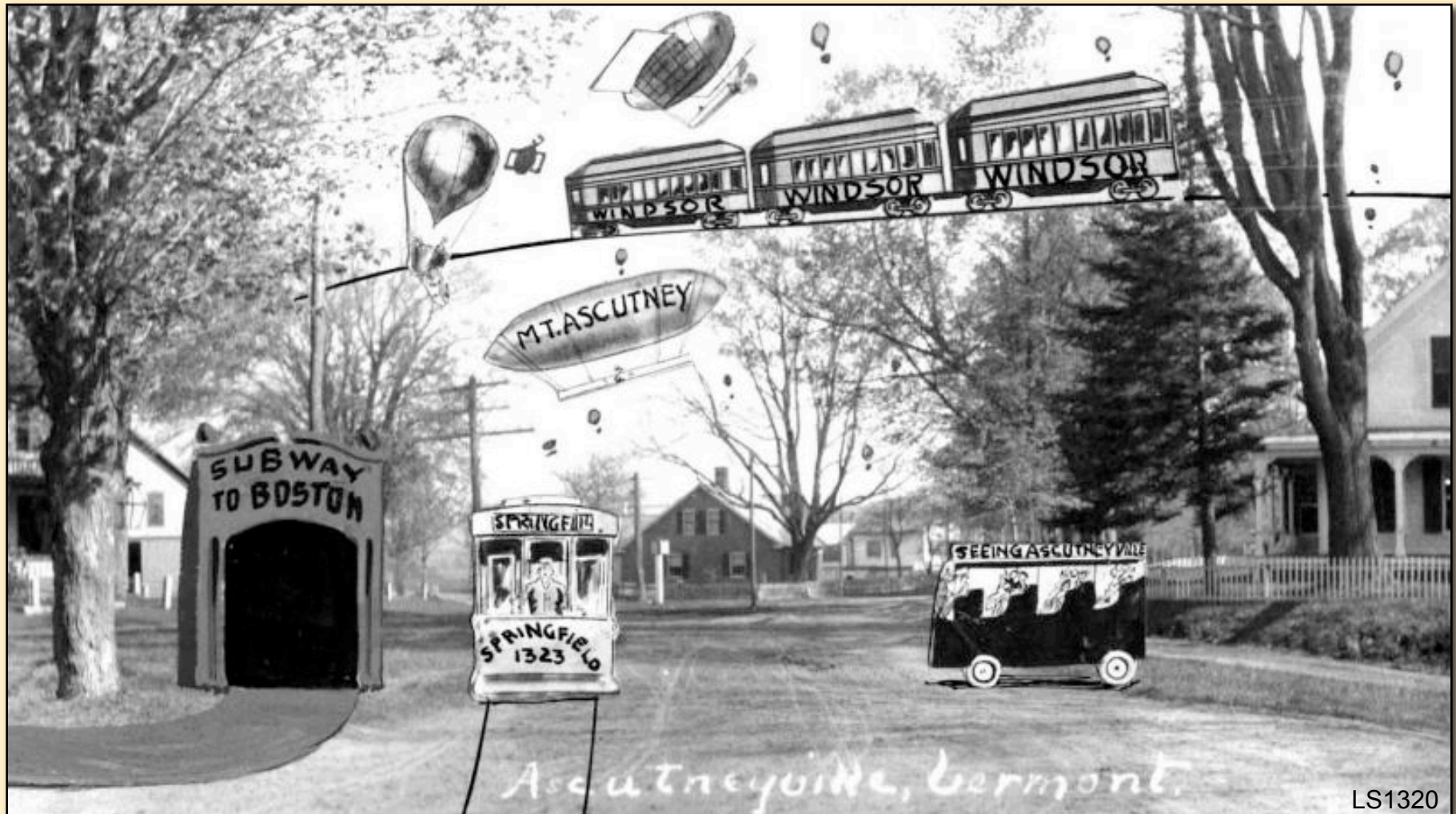


4 points

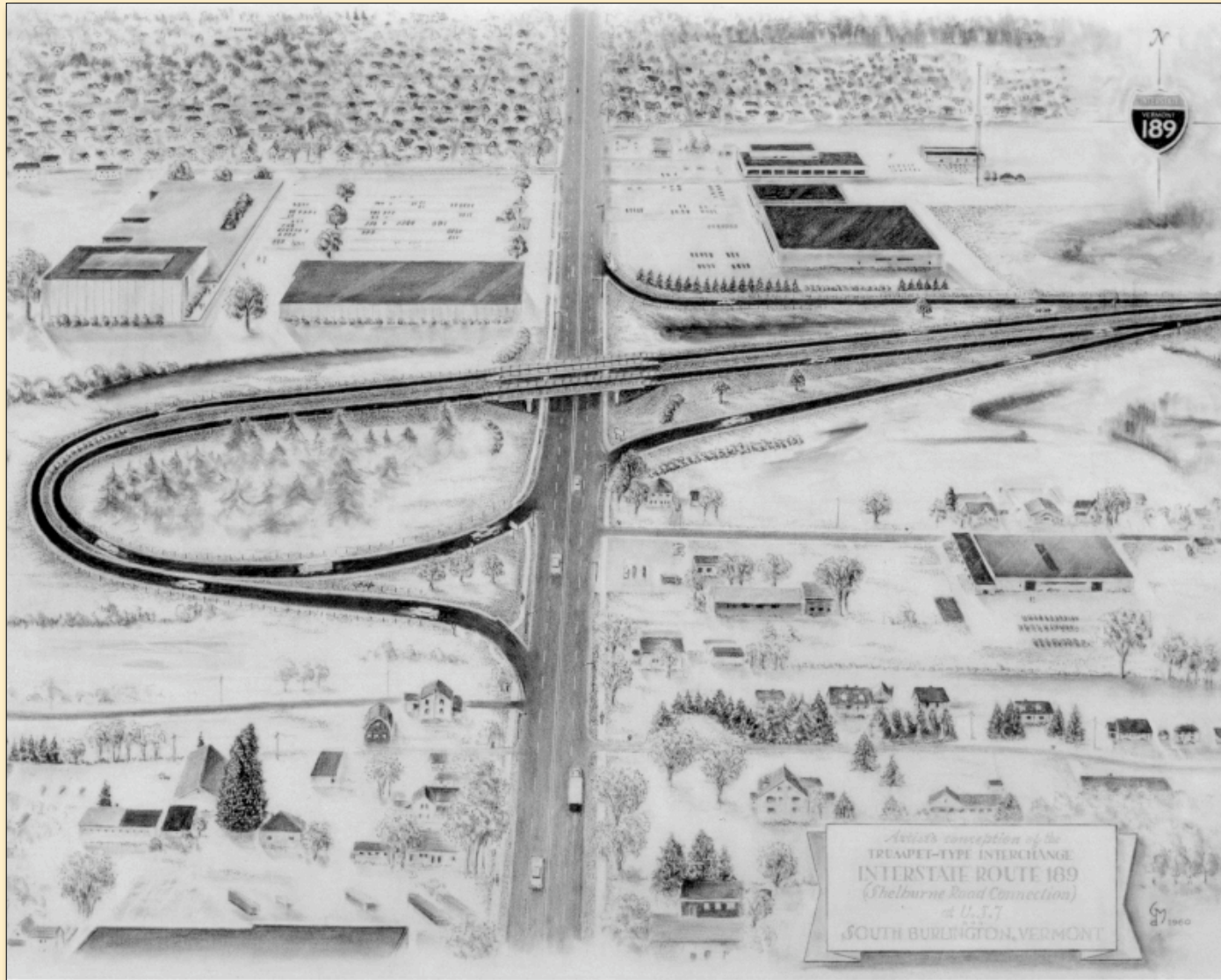
Buffer Quality is Increasing over Time



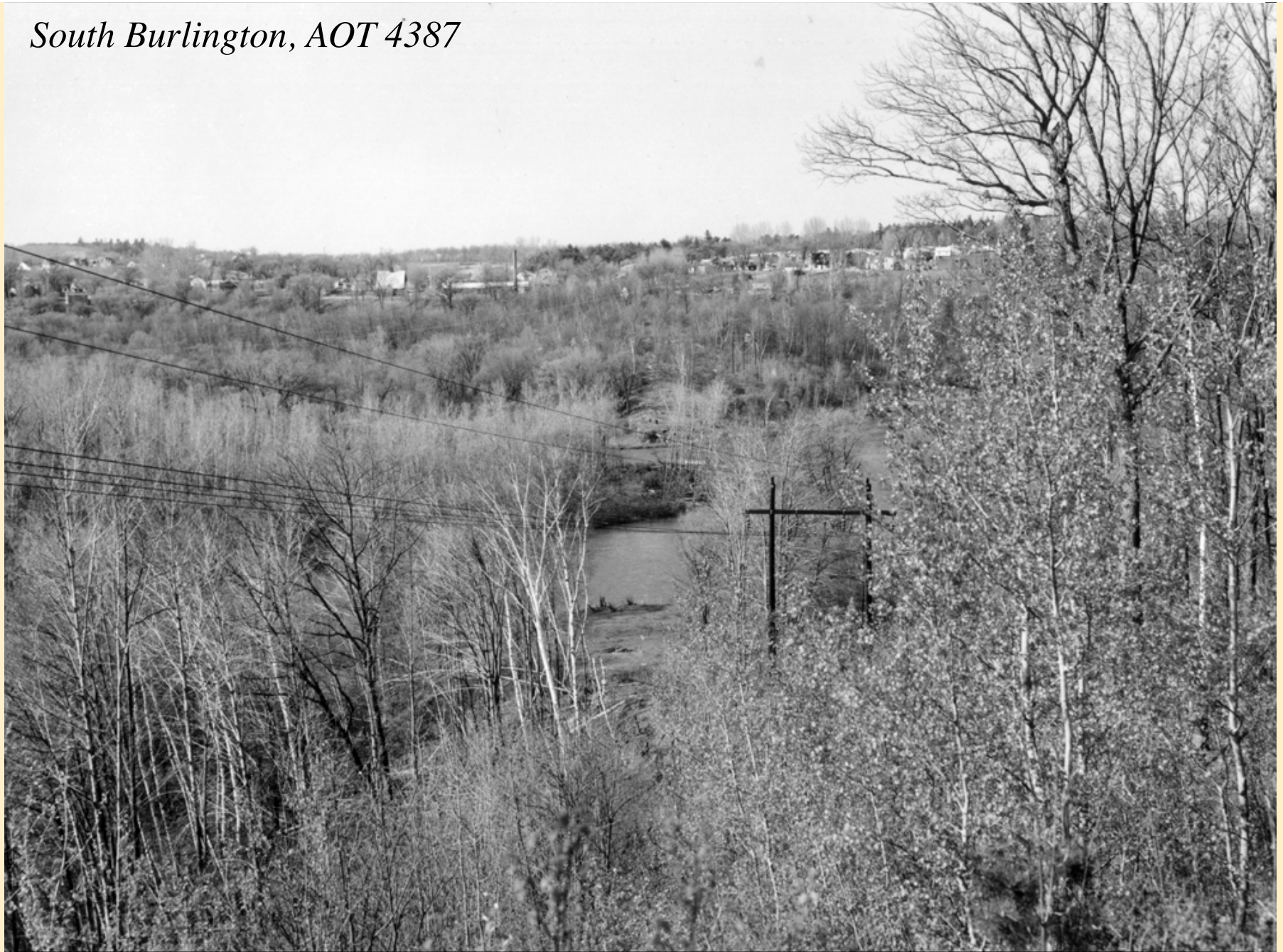
How do we envision the future of the Vermont Landscape?



But, instead of trains, subways, streetcars and balloons we have...



South Burlington, AOT 4387



Vermont State Archives, Agency of Transportation: May '61-October '64

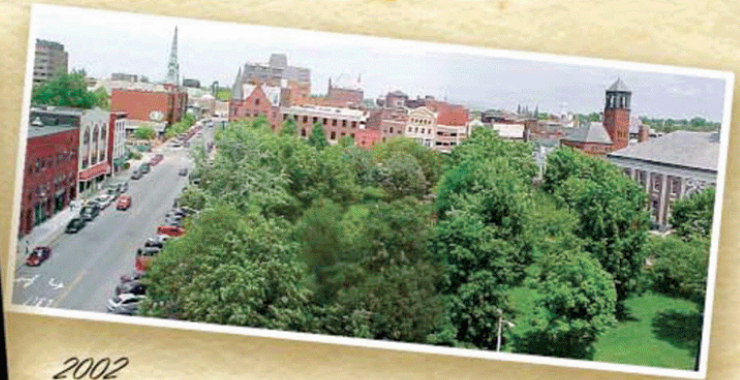
See your town as it was 100 YEARS AGO!

LANDSCAPE
CHANGE
PROGRAM

Burlington's City Hall Park



1859



2002

Marvel at the damage wrought by the 1927 flood. Find pictures of long-vanished farms. View the Green Mountain state clearcut for sheep farming. See landslides, ice jams, mines, and quarries. Visit our collection and search thousands of Vermont images by place, by date, by topic!

www.uvm.edu/perkins/landscape