



Setting as Character

Vermont's
Landscape,
Stories, and
Sense of
Place

Imaging and Imagining the Place that was and is Vermont



LANDSCAPE CHANGE PROGRAM

**See Vermont as it was
200 YEARS AGO**

A digital archive of historic and current photo pairs, educational resources, and more!



Paul Bierman, Geology and Natural Resources,
University of Vermont

Images show us a vanished life



LS08157, Photographer's cart
Hartford

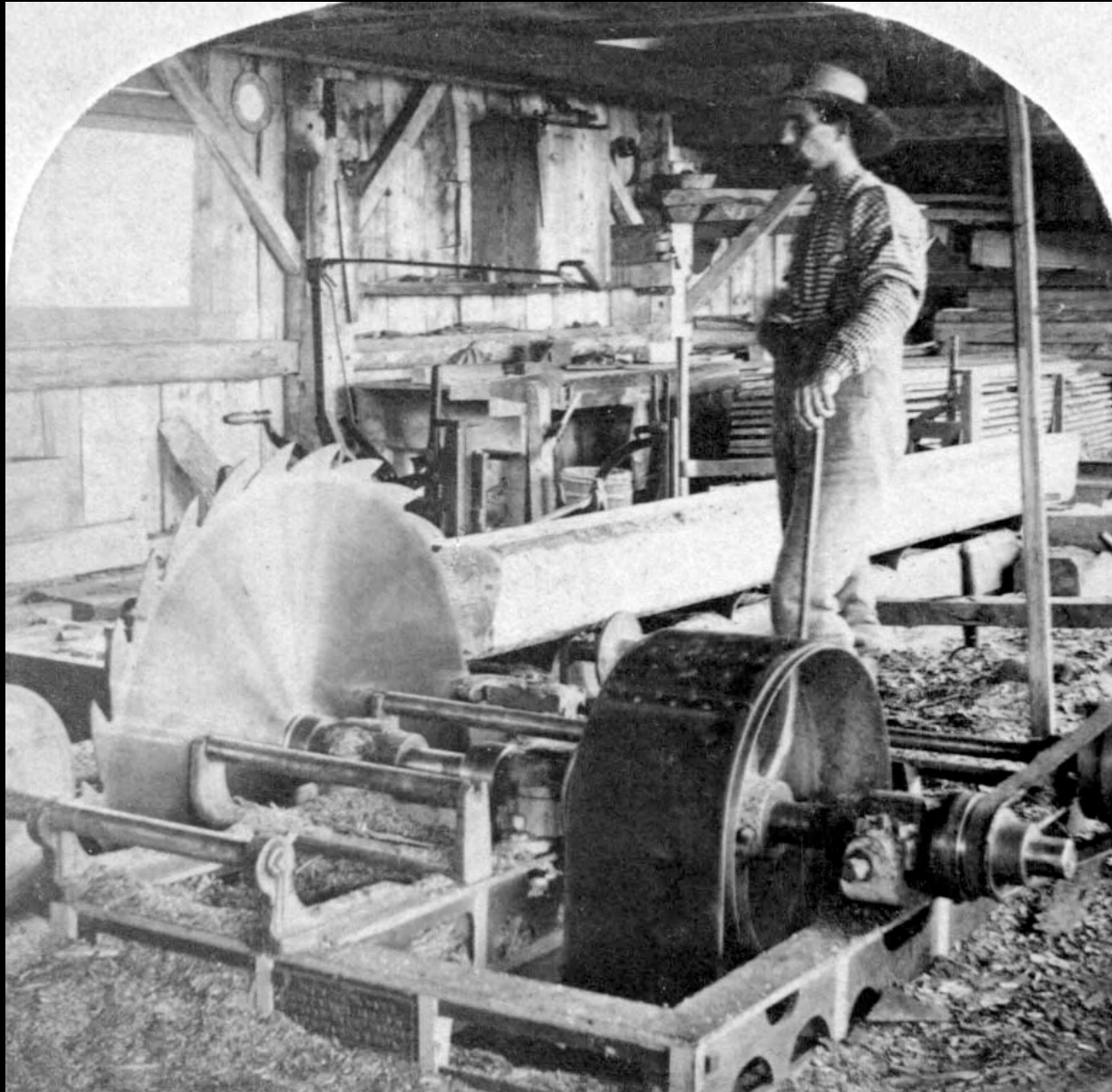
and a vanished landscape



LS08157, Photographer's cart
Hartford

and a vanished landscape

Making a living



Enjoying a hike

Mt. Mansfield



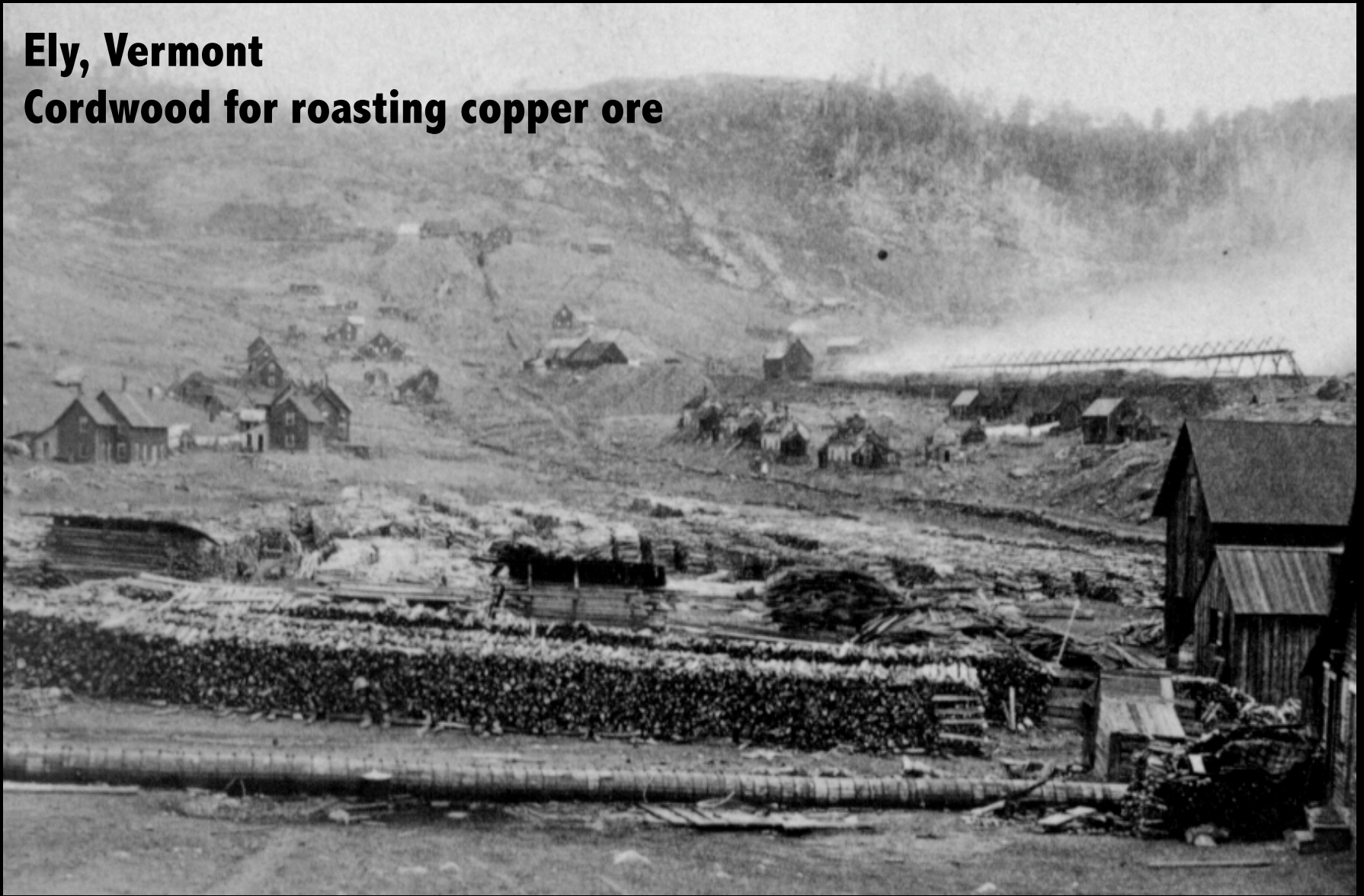
Flooding is common

1867 Hartford



238. Ice Jam, Main Street, West Hartford, Vt. 1867.

Ely, Vermont
Cordwood for roasting copper ore



A lively but damaging copper industry

**Mount Mansfield from Underhill, Vermont
Charles Heyde, c. 1855-65**

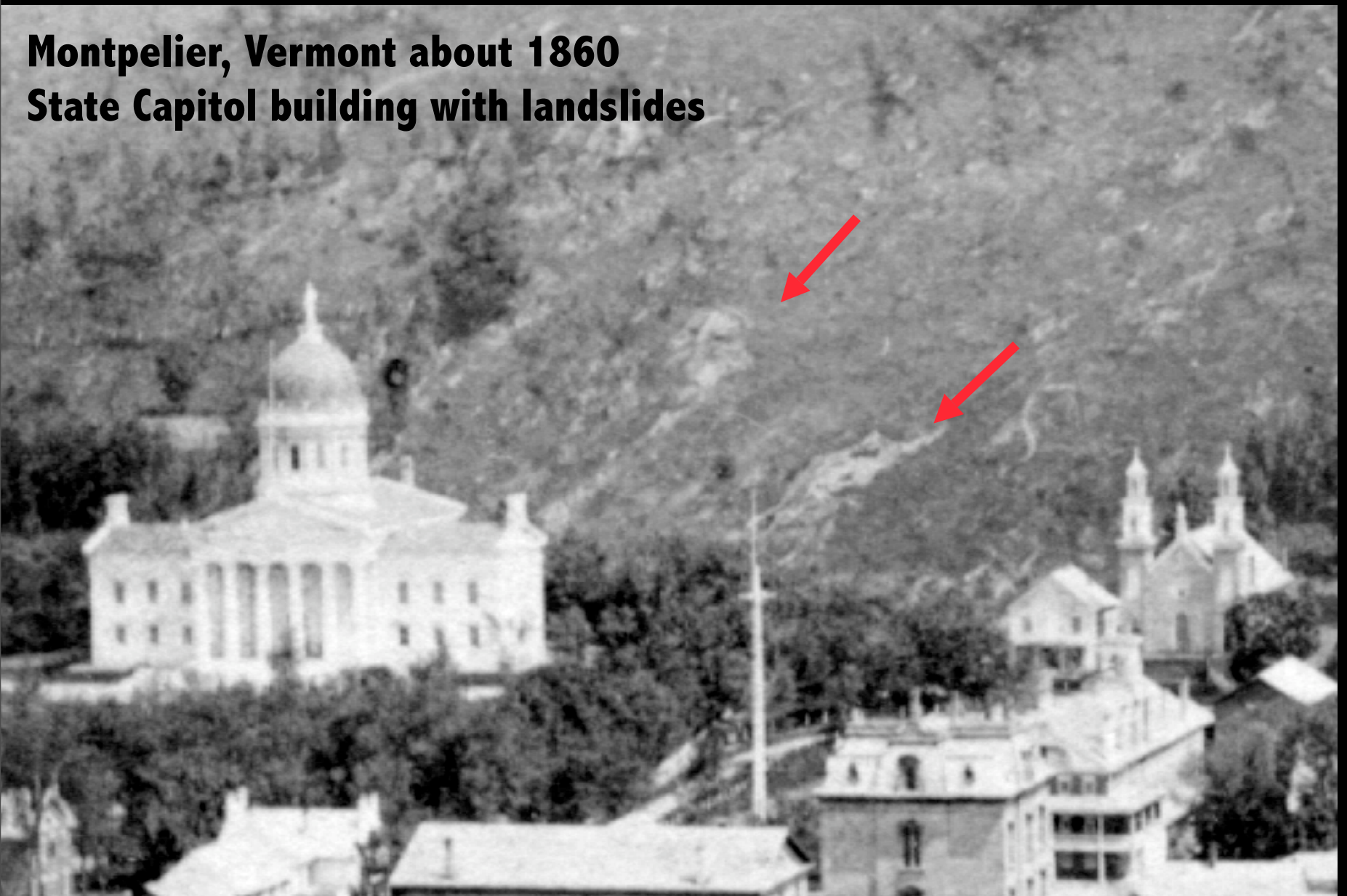
Gully

Stumps



Without the trees, erosion.

Montpelier, Vermont about 1860
State Capitol building with landslides



Without the trees, erosion

These images tell a story of human-landscape interaction





Now... 13,096
landscape
images
on-line

24/7 access

Free to anyone

Web-based archive

Collected by students

Community involvement

National Science and Lintilhac Foundation funding

<http://uvm.edu/perkins/landscape>



See Vermont as it was 200 YEARS AGO

A digital archive of historic and current photo pairs, educational resources, and more!



home search submit learn mission members

quick image search

[Advanced Search](#)
[Map Search](#)

You searched for: **killington**. Here are the results:

Refine Search Distribution Image Details List Thumbnails

Now Showing Images 37 to 48 of 51 (Page 4 of 5)

LS Number Go



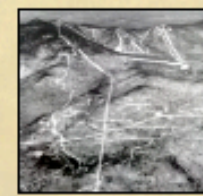
LS07408

River and house
Killington, 1897



LS07954

Gondola Ride
Killington, Year Unknown



LS07980

Ski Trails on Mountains
Killington, Year Unknown



LS07986

People on a Chairlift
Killington, Year Unknown



LS07994

Governor on Skis
Montpelier, Year Unknown



LS08000

Snow Covered Trees
Killington, Year Unknown



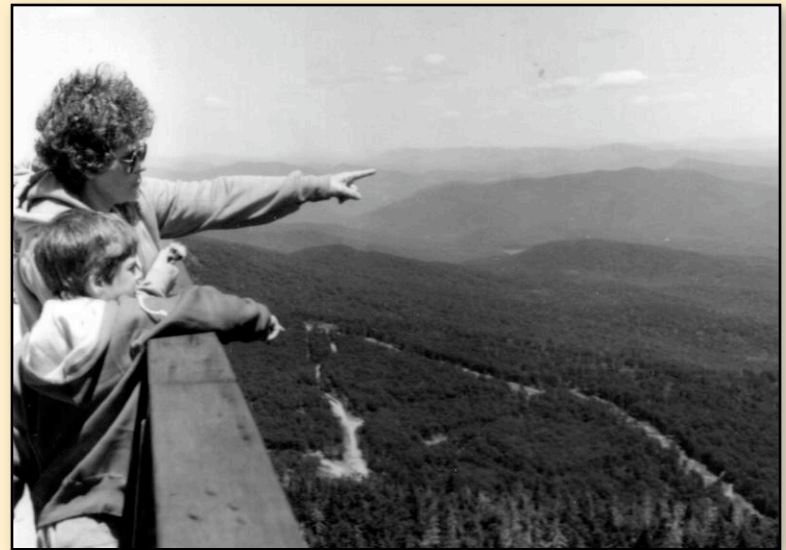
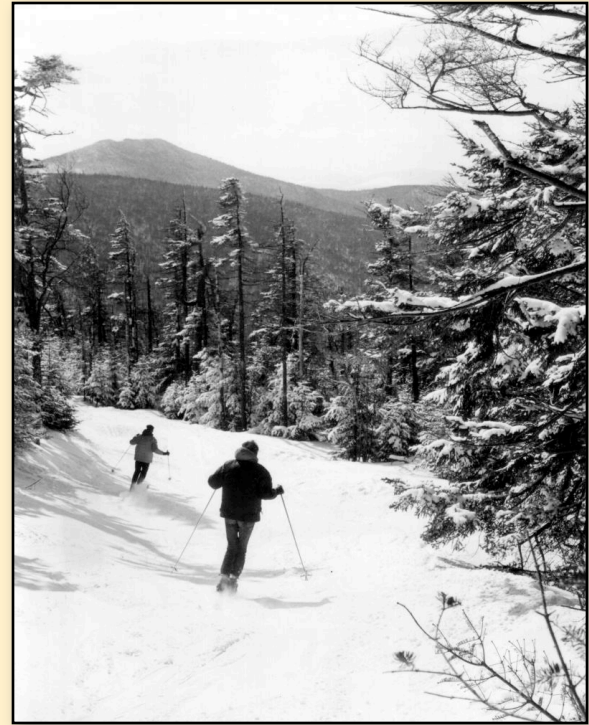
LS08033

People Admiring the Landscape
Killington, 1978



LS08087

Killington Ski Resort
Killington, 1963



You searched for: **killington**. Here are the results:

Refine Search

Distribution

Image Details

List

Thumbnails

⏪ ◀ Now Showing Image 11 of 51 ▶ ⏩

Governor on Skis

Town:

[Montpelier](#)

County:

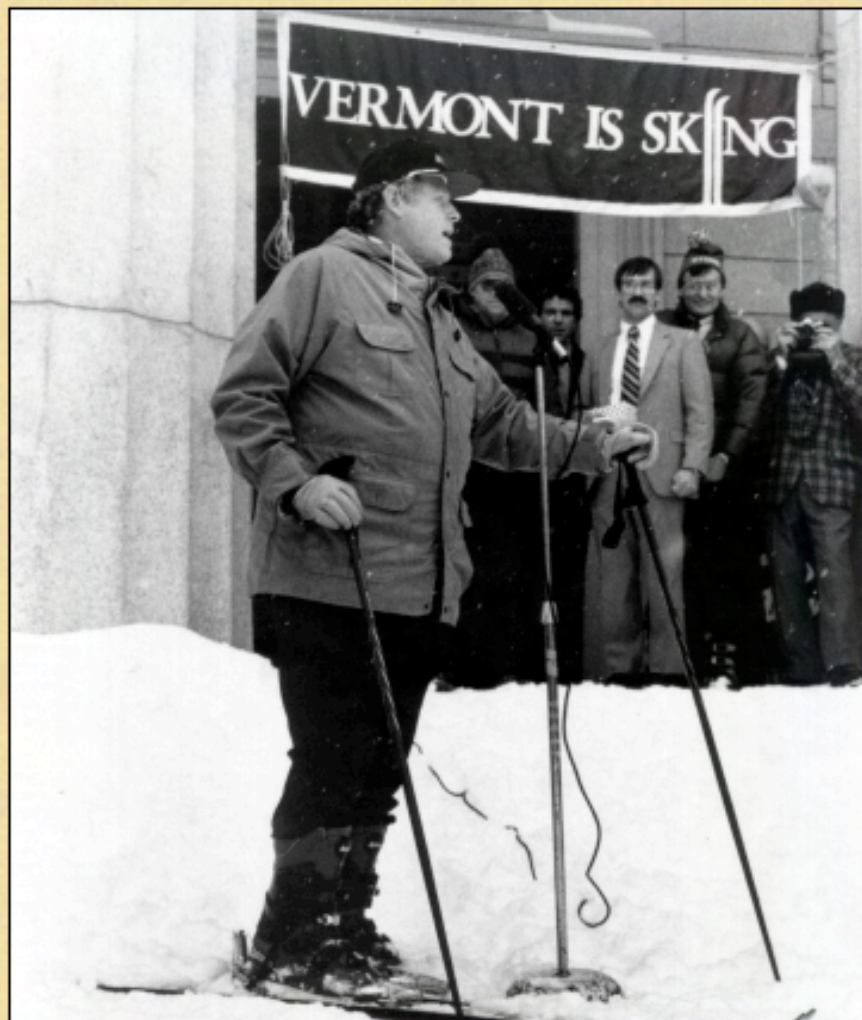
[Washington](#)

Date:

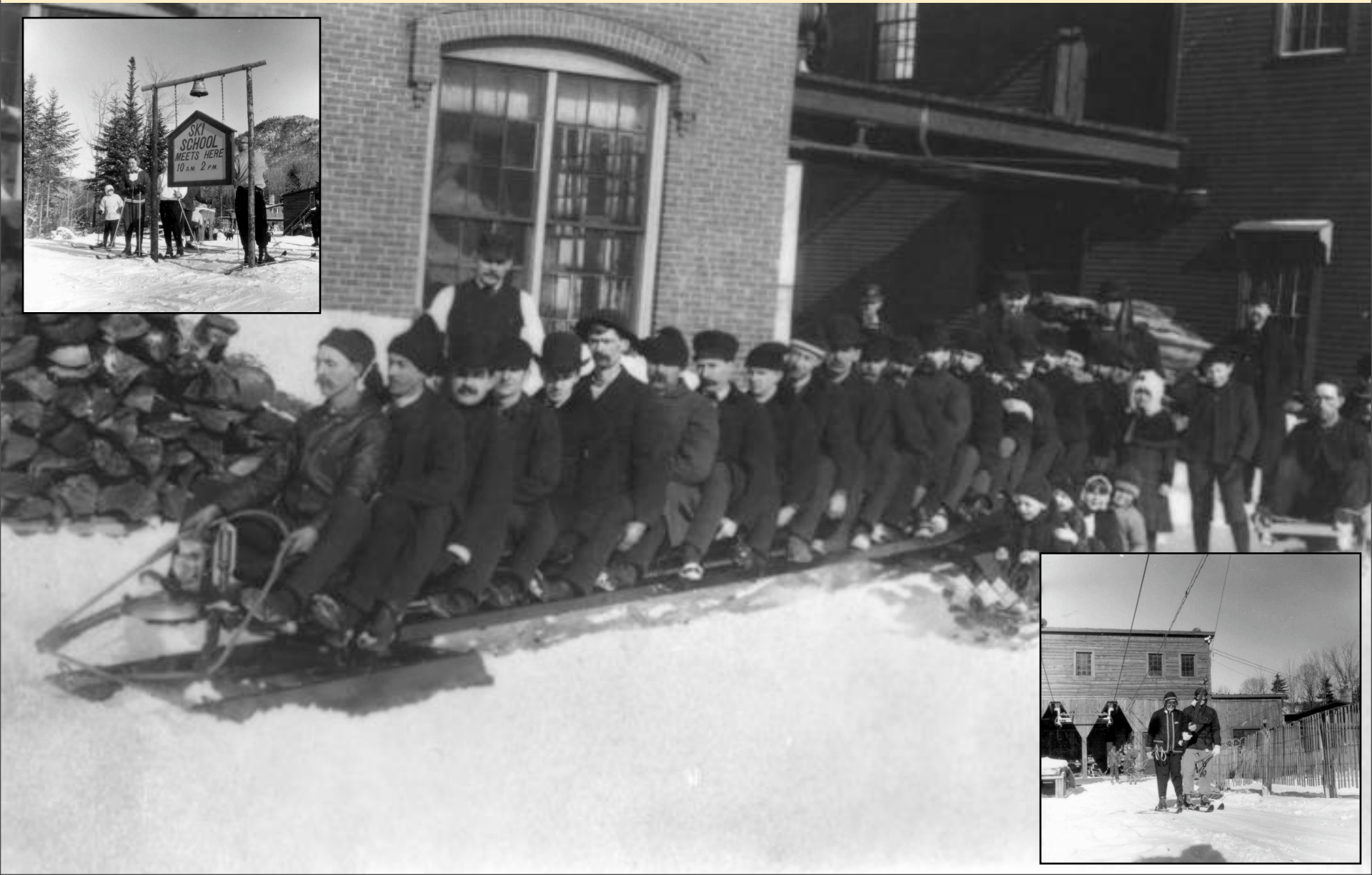
No Date

Description:

This image shows Vermont's Governor Richard A Snelling stands on skis on the steps of Vermont's State House (covered by four feet of machine made snow laid down by a **Killington** snowmaking crew) as he challenges Governor Lamm of Colorado and Governor Matheson of Utah to the longest ski season. Vermont claimed the victory last season after logging 246 continuous days of lift-served skiing. A sign in the background reads, "Vermont is Skiing." There are several other men standing under the sign. Esther Munroe Swift writes on 2005-4-20: I am not certain of the date for this image. But it an excellent photo of Richard Arkwright Snelling who was born 18 February 1927 and died 14 August 1991. He was Governor of Vermont from 1977 to 1985 and then from January 10 1991 until his death in August of that year. He was the only Governor who served 2 terms and the later was elected to a third term. Remebering what he looked like, I would guess this photo was taken in his first term as Governor.



The seasons (OK, winter) define Vermont, its landscape, and us in many ways...





This is 1941!
Somewhere in the northeast Kingdom



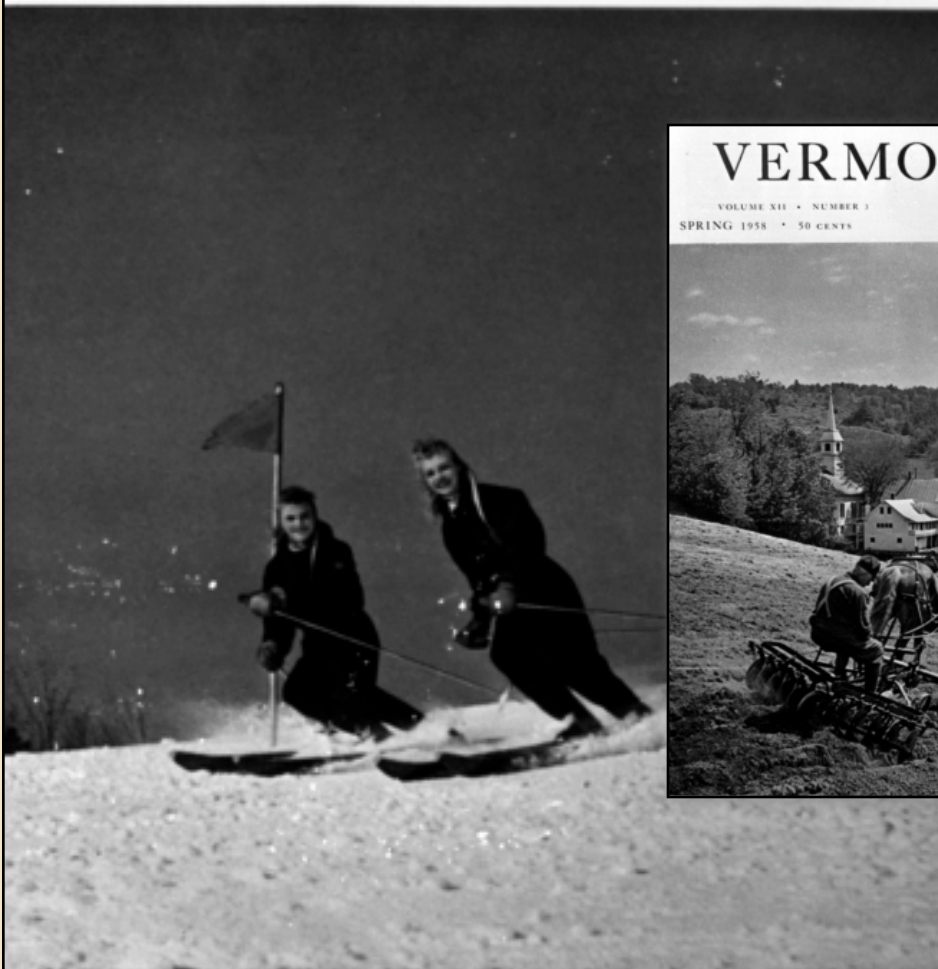
ICE JAM. HARTFORD VT. FEB. '08

LS09524
Ice Jam
Hartford,
1908

VERMONT *Life*

VOLUME XIII • NUMBER 2 • 50 CENTS

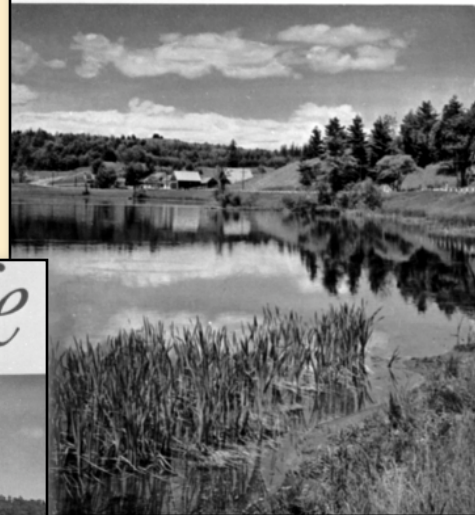
WINTER 1958-59



SKI VERMONT

VERMONT *Life*

VOLUME XII • NUMBER 4 • 50 CENTS
SUMMER 1958



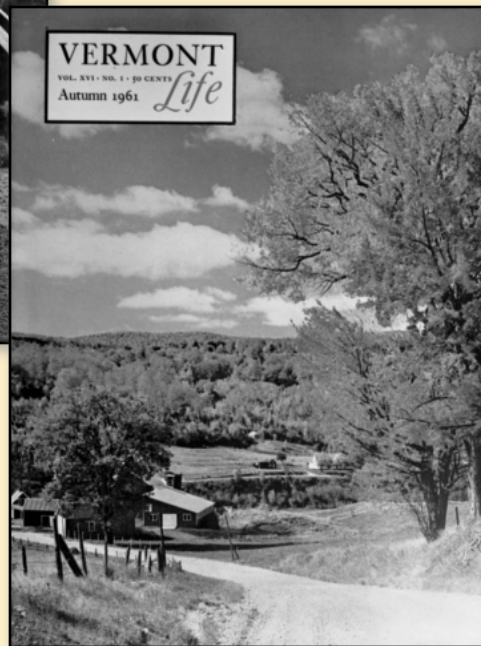
VERMONT *Life*

VOLUME XII • NUMBER 3
SPRING 1958 • 50 CENTS



VERMONT *Life*

VOL. XVI • NO. 1 • 50 CENTS
Autumn 1961



Snow-melt floods in the spring shape people's lives



LS09593

White River Junction 1913 Flood

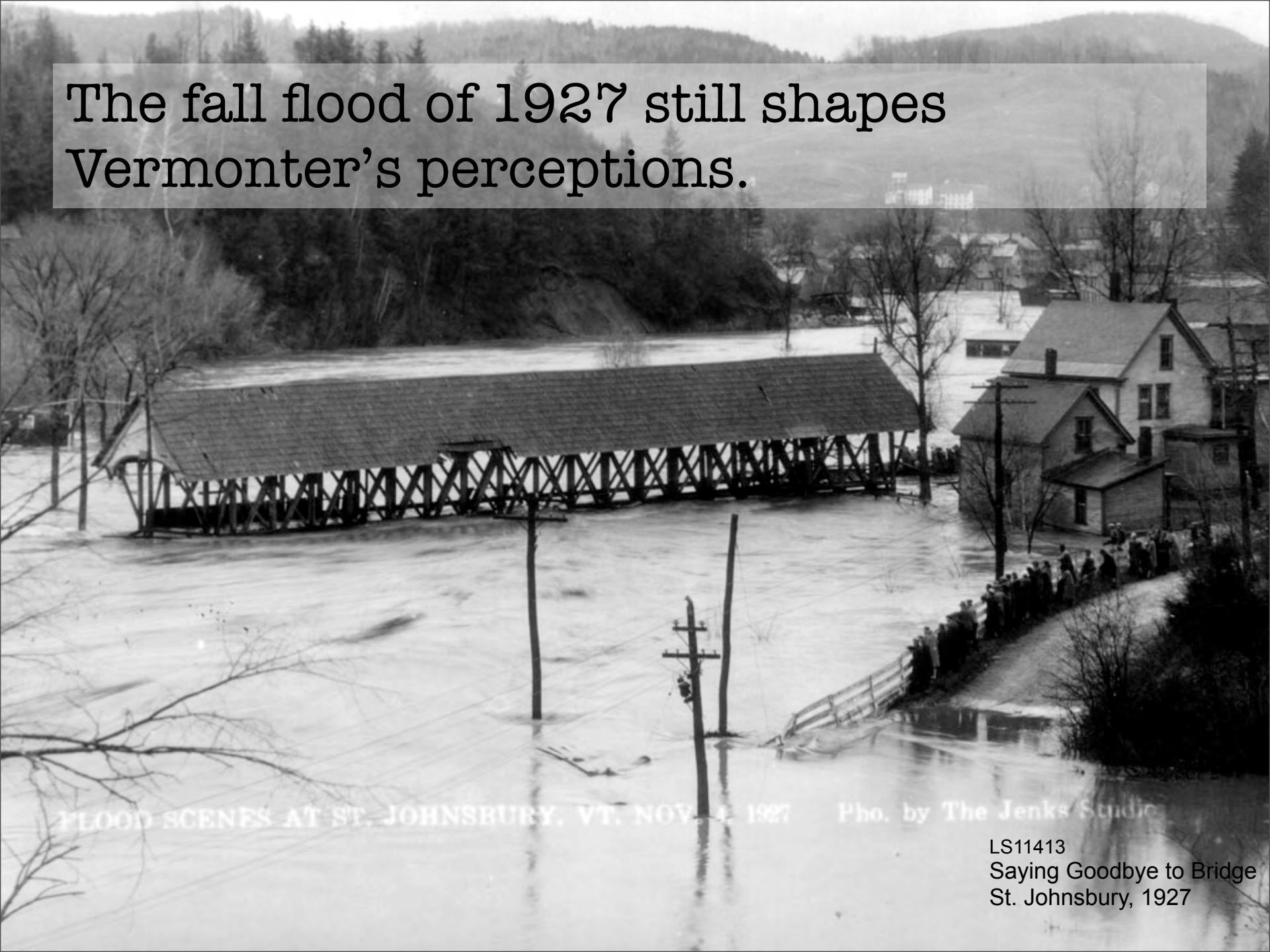
Hartford, 1913

Summer is short, but important in
defining this place



LS08899
Children in Lake
Newport

The fall flood of 1927 still shapes
Vermonters' perceptions.



FLOOD SCENES AT ST. JOHNSBURY, VT. NOV. 4, 1927 Pho. by The Jenks Studio

LS11413
Saying Goodbye to Bridge
St. Johnsbury, 1927

Our place is a landscape very much shaped by geologic forces

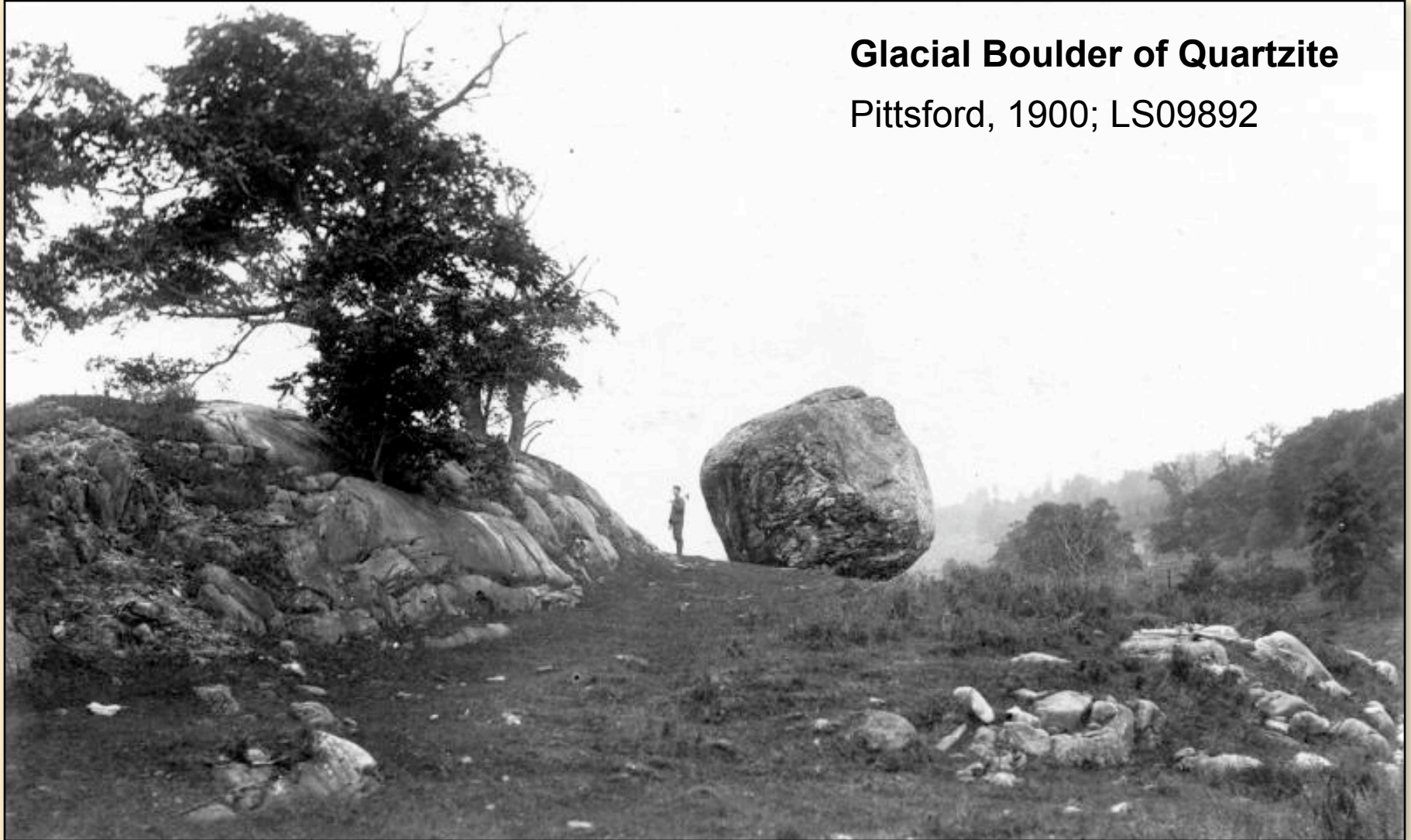


With forms molded by the flow of glacial
ice



Shelburne Farms, 1927
LS10080

And with rocks from far away, littering
the landscape....

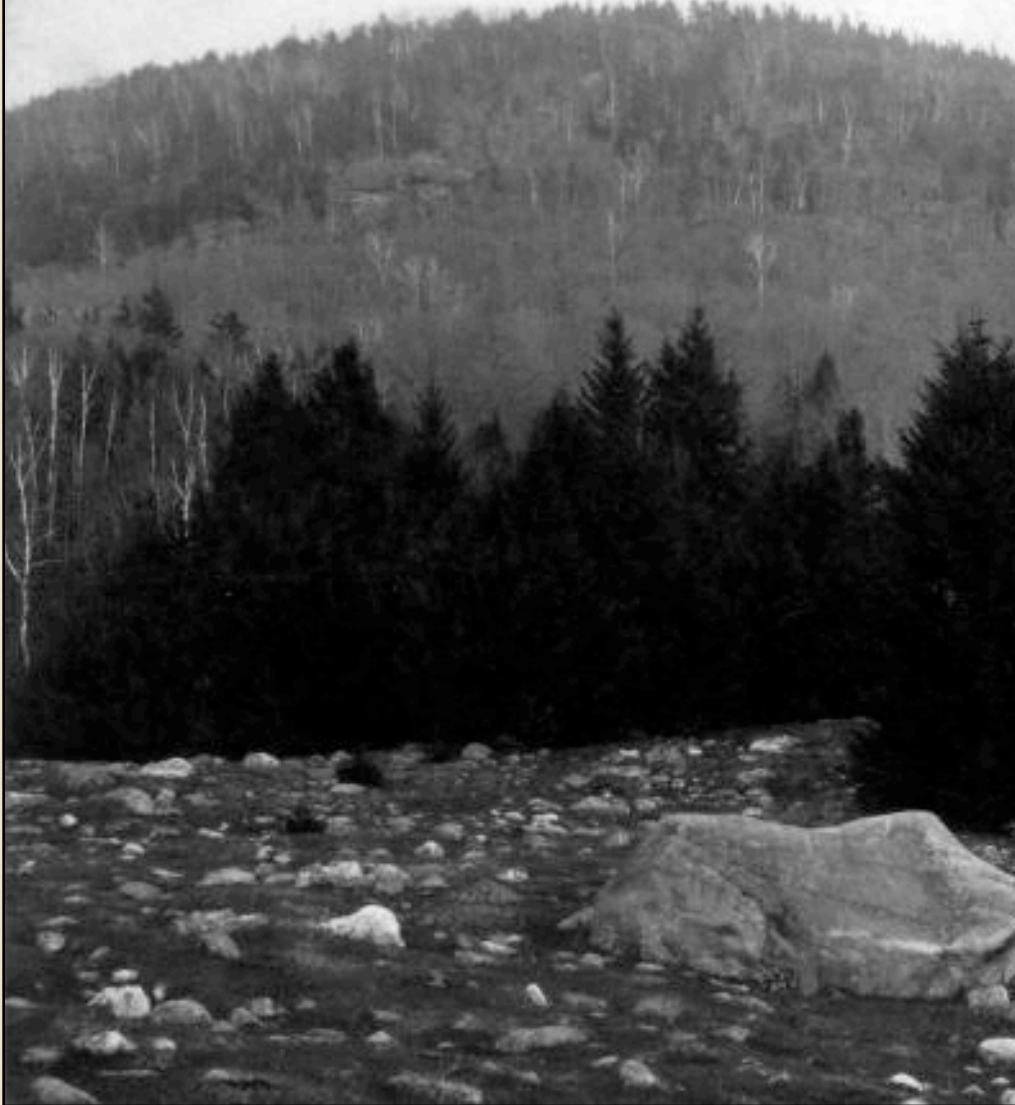


Glacial Boulder of Quartzite

Pittsford, 1900; LS09892

making farming a challenge....

LS03628
Upland Field of Rocks - Glacial Erratics
Killington



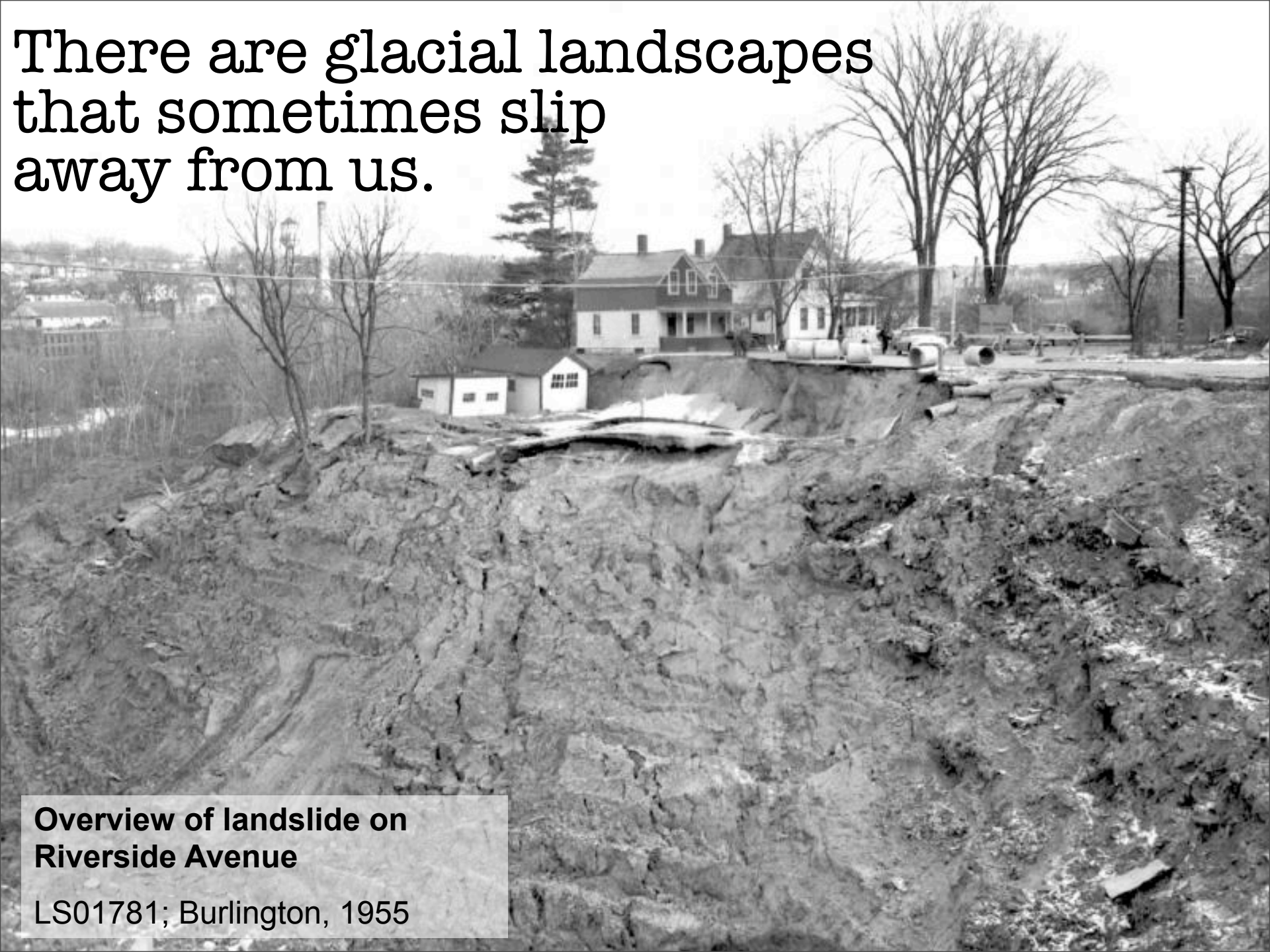
LS05143
Potato Harvest
Worcester,
1925



LS07056
Haying with buck rake
Bennington,
1949



There are glacial landscapes
that sometimes slip
away from us.



**Overview of landslide on
Riverside Avenue**

LS01781; Burlington, 1955

and glacial clay that supplied the bricks
for our buildings



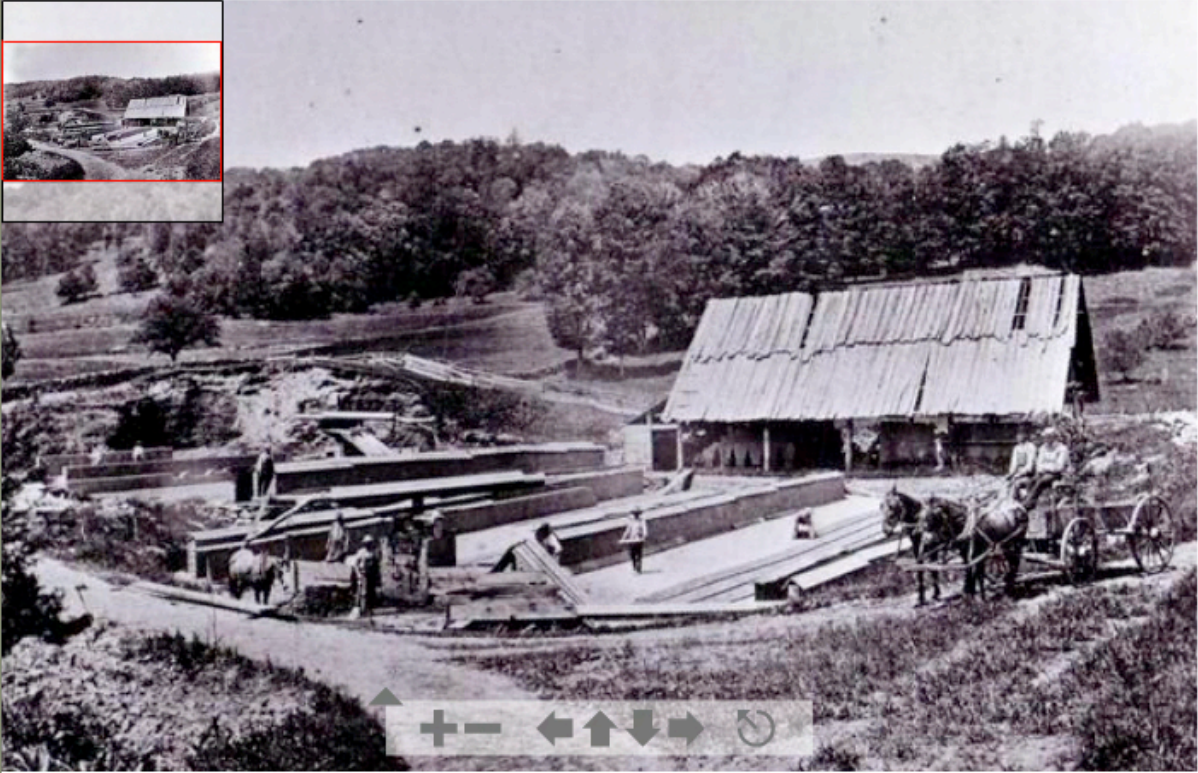
Hardwick, Vermont., The Square.

The closer you can look, the more stories each image tells....

Now Showing Image 7 of 52

Brickyard

Zoomify Close



↑ + - ← ↑ ↓ → ↻

[i](#) [🔍](#) [+](#) [-](#) [🗨️](#) [✉️](#)

Town: [Woodstock](#)

Can you see the bricks and the kilns?

Brickyard

Zoomify

Close



Town:

[Woodstock](#)

Can you see the raw materials, the claybank?

Brickyard

Zoomify

Close



Town:

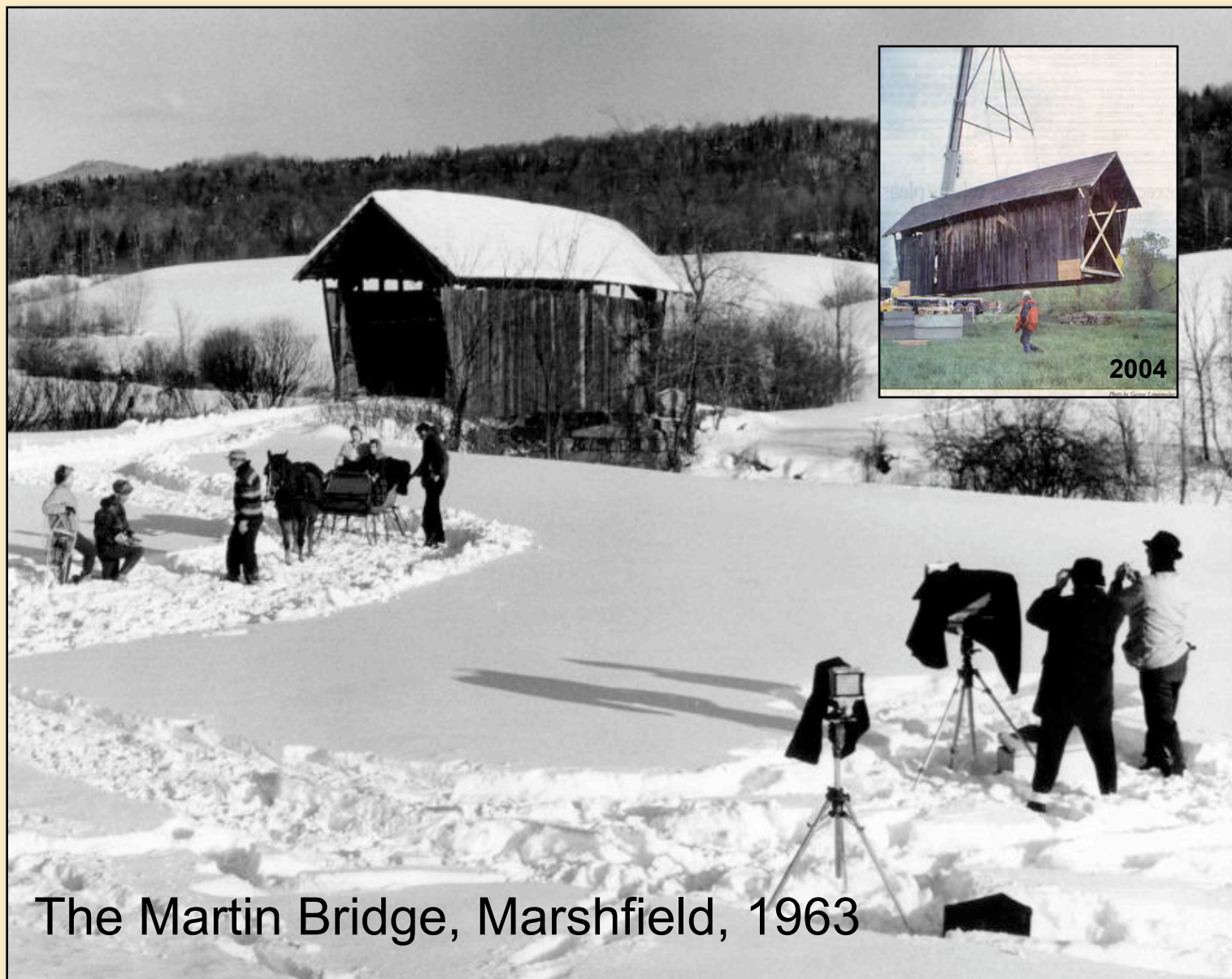
[Woodstock](#)

What's really Vermont?



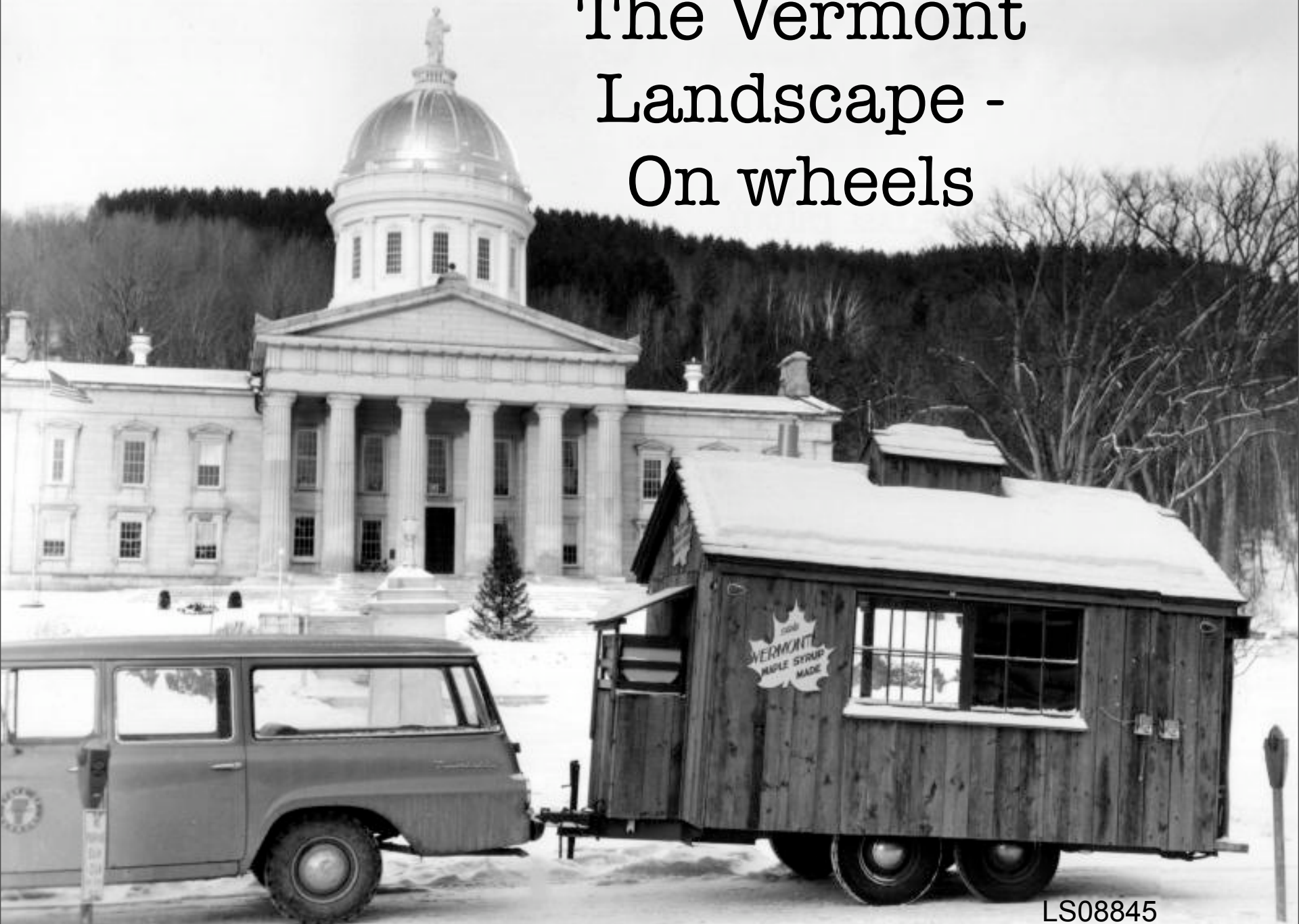
And what's
an illusion?

The Vermont Landscape - Posed



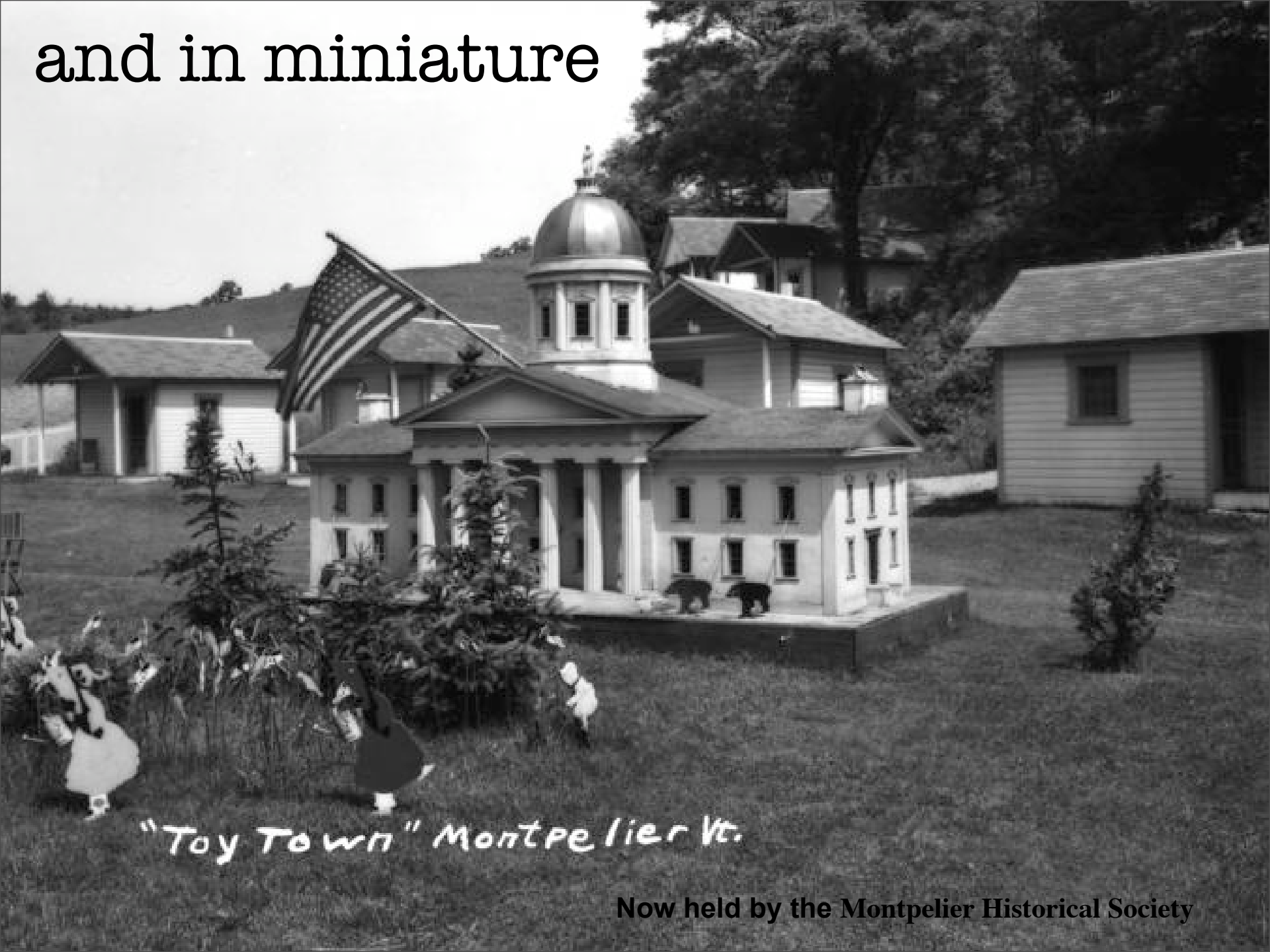
The Martin Bridge, Marshfield, 1963

The Vermont Landscape - On wheels



LS08845

and in miniature



"Toy Town" Montpelier Vt.

Now held by the Montpelier Historical Society

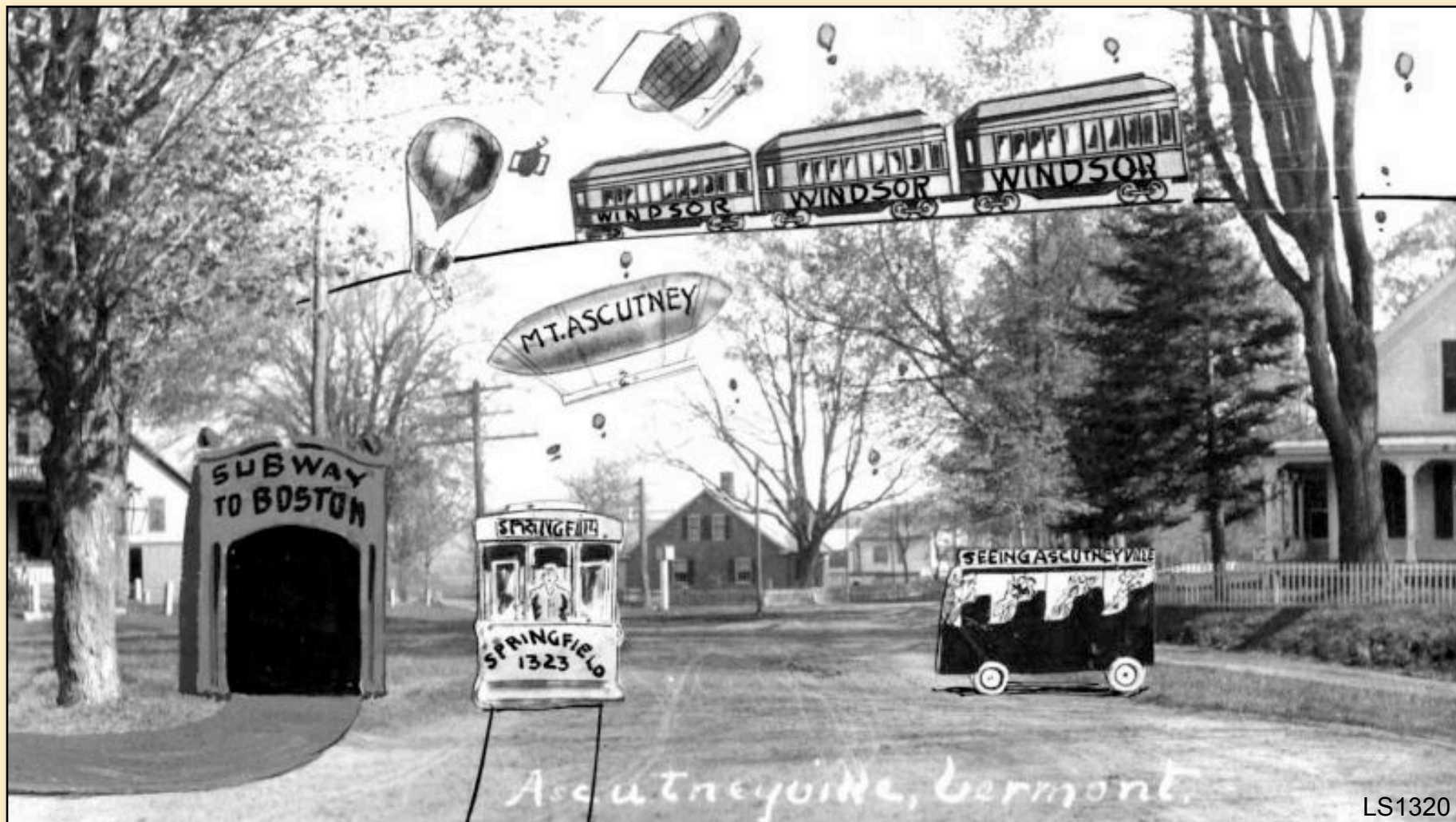
And that never did come to pass....

STATE OF VERMONT
DEPARTMENT OF HIGHWAYS

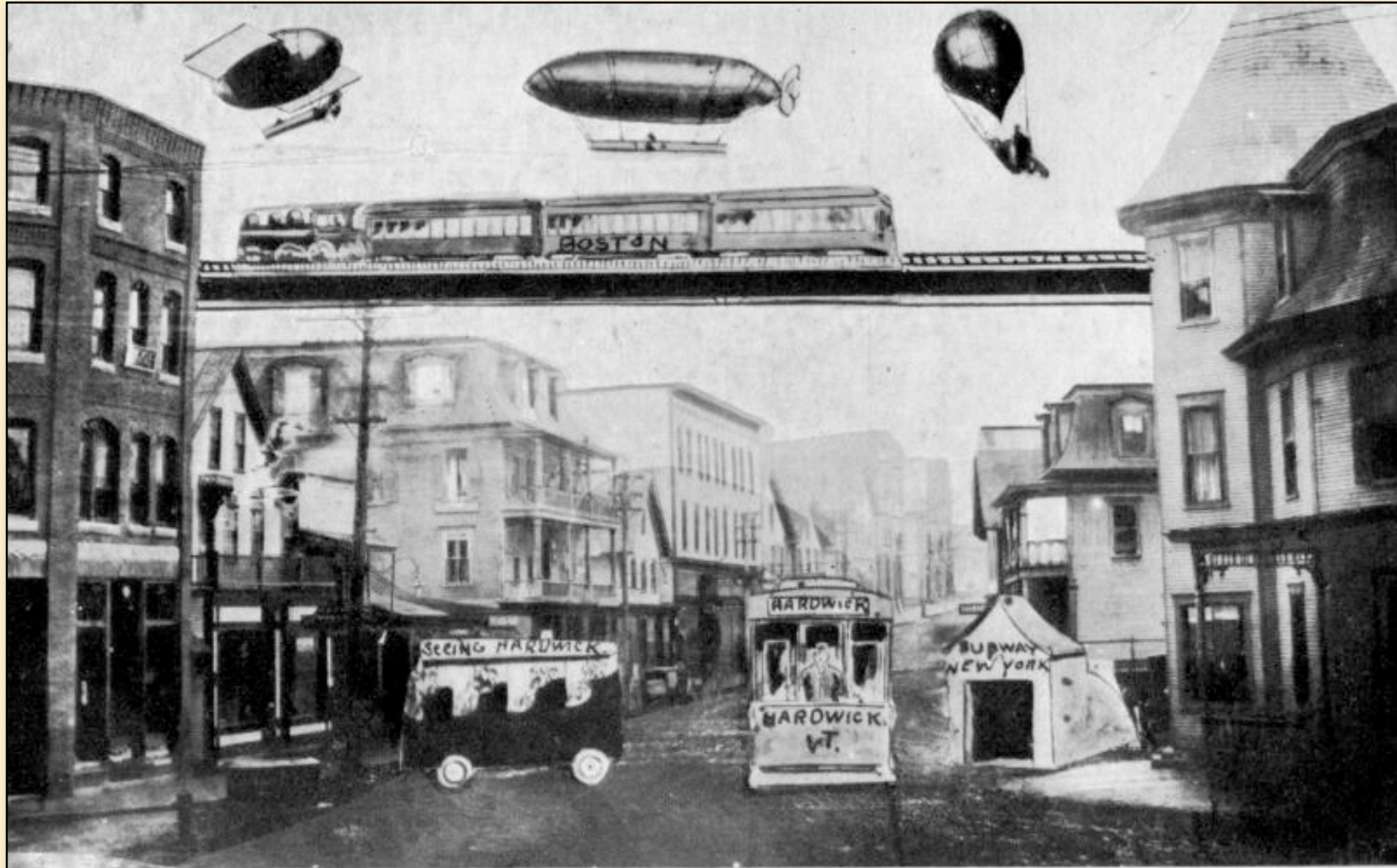


CITY
OF
BURLINGTON

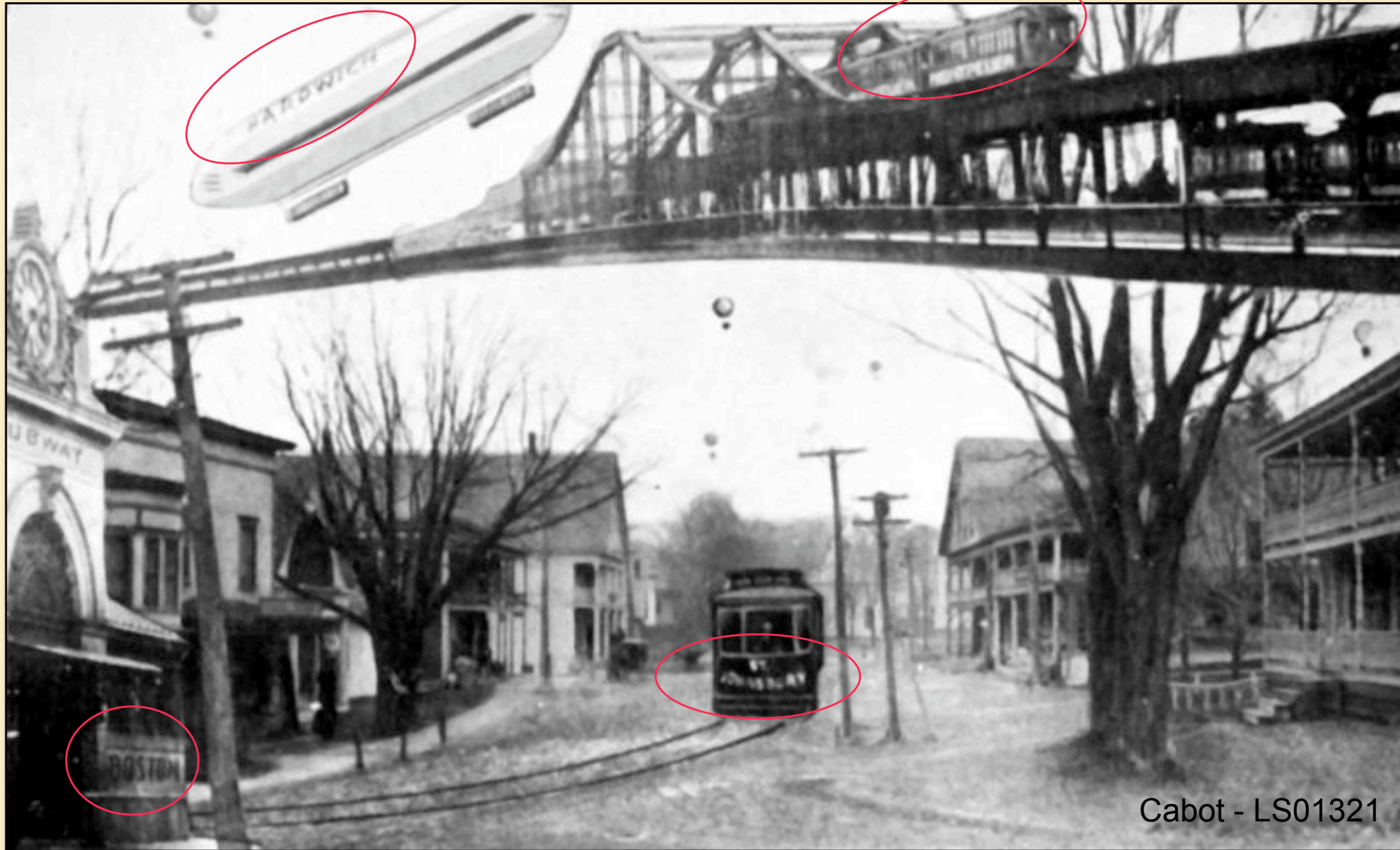
How do we envision the future of the Vermont Landscape?



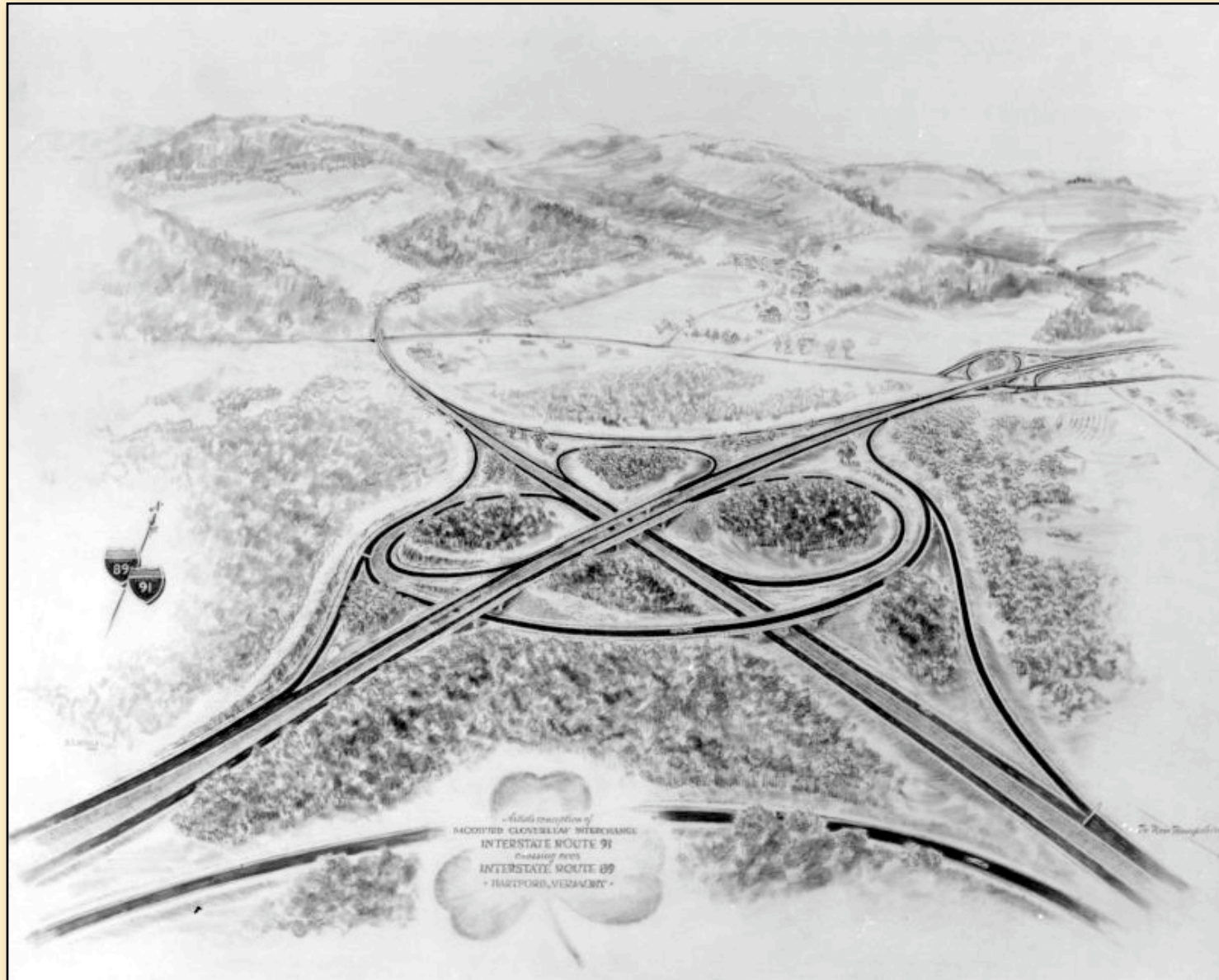
Is this Hardwick?



Focus on Public, Mass Transportation systems!



But, instead of trains, subways, streetcars and balloons we have...







Middlesex LS6447



Hartford, 1967

LS7123

**Interstate 89
Construction**

10-17-1962

Agency of
Transportation
Collection Vermont
State Archives



The building of the interstate, excepting land clearance, the most significant landscape changes Vermont has ever see....

South Burlington, AOT 4387



Vermont State Archives, Agency of Transportation: May '61-October '64

South Burlington, AOT 4387



Vermont State Archives, Agency of Transportation: May '61-October '64

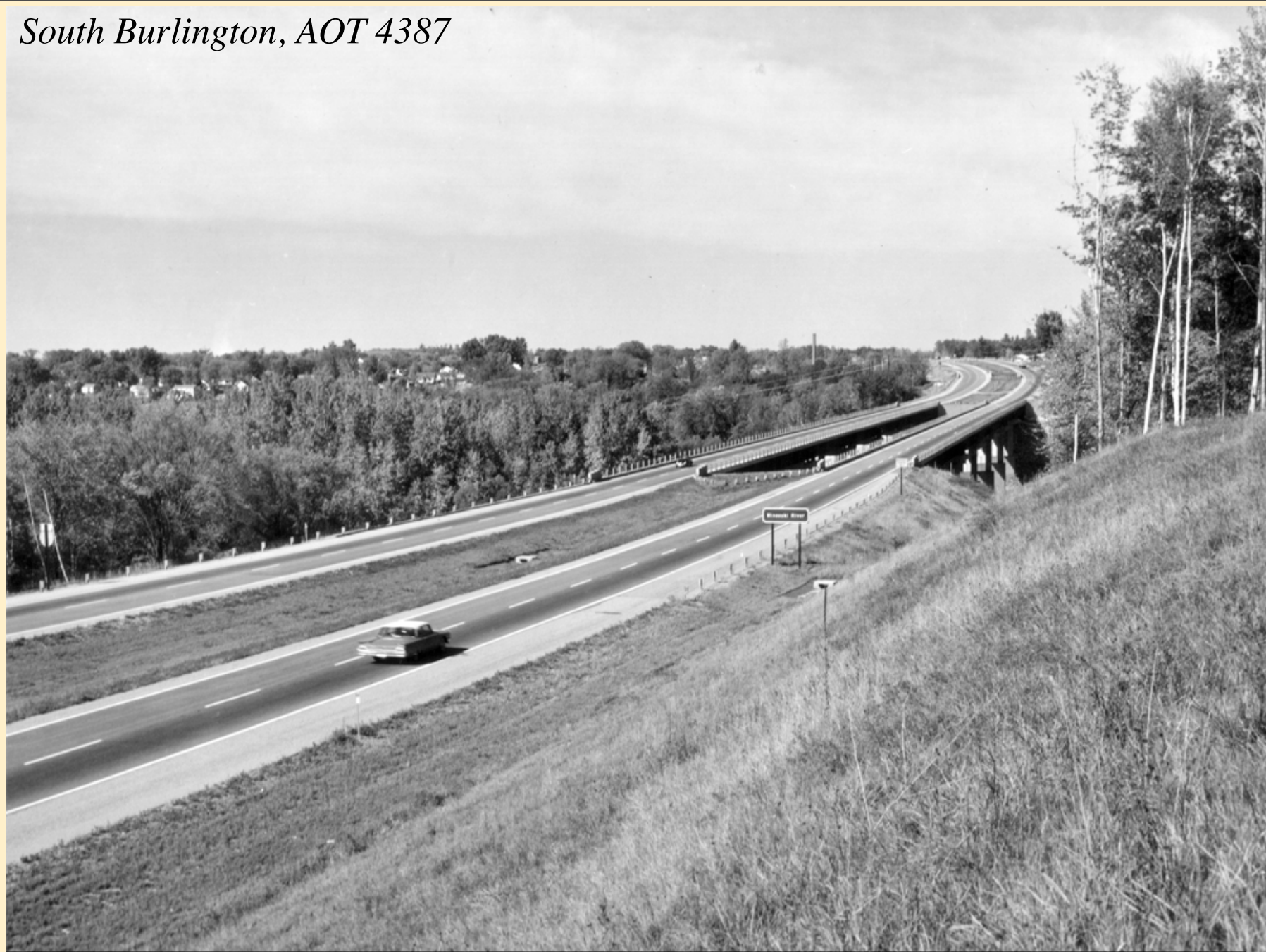
South Burlington, AOT 4387



Vermont State Archives, Agency of Transportation: May '61-October '64

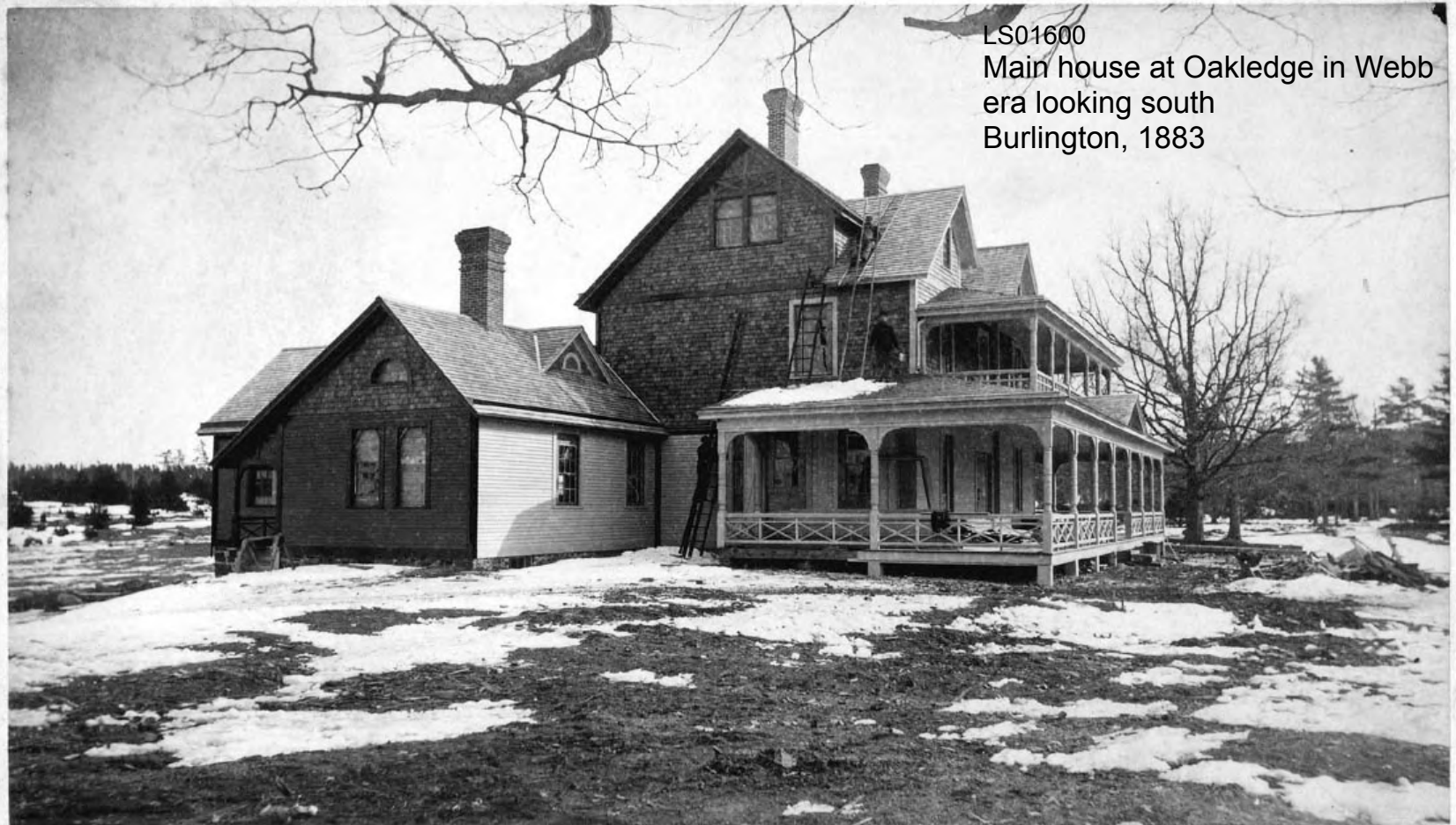
6095

South Burlington, AOT 4387



Vermont State Archives, Agency of Transportation: May '61-October '64

Sometimes, images let us find a place that had been lost.

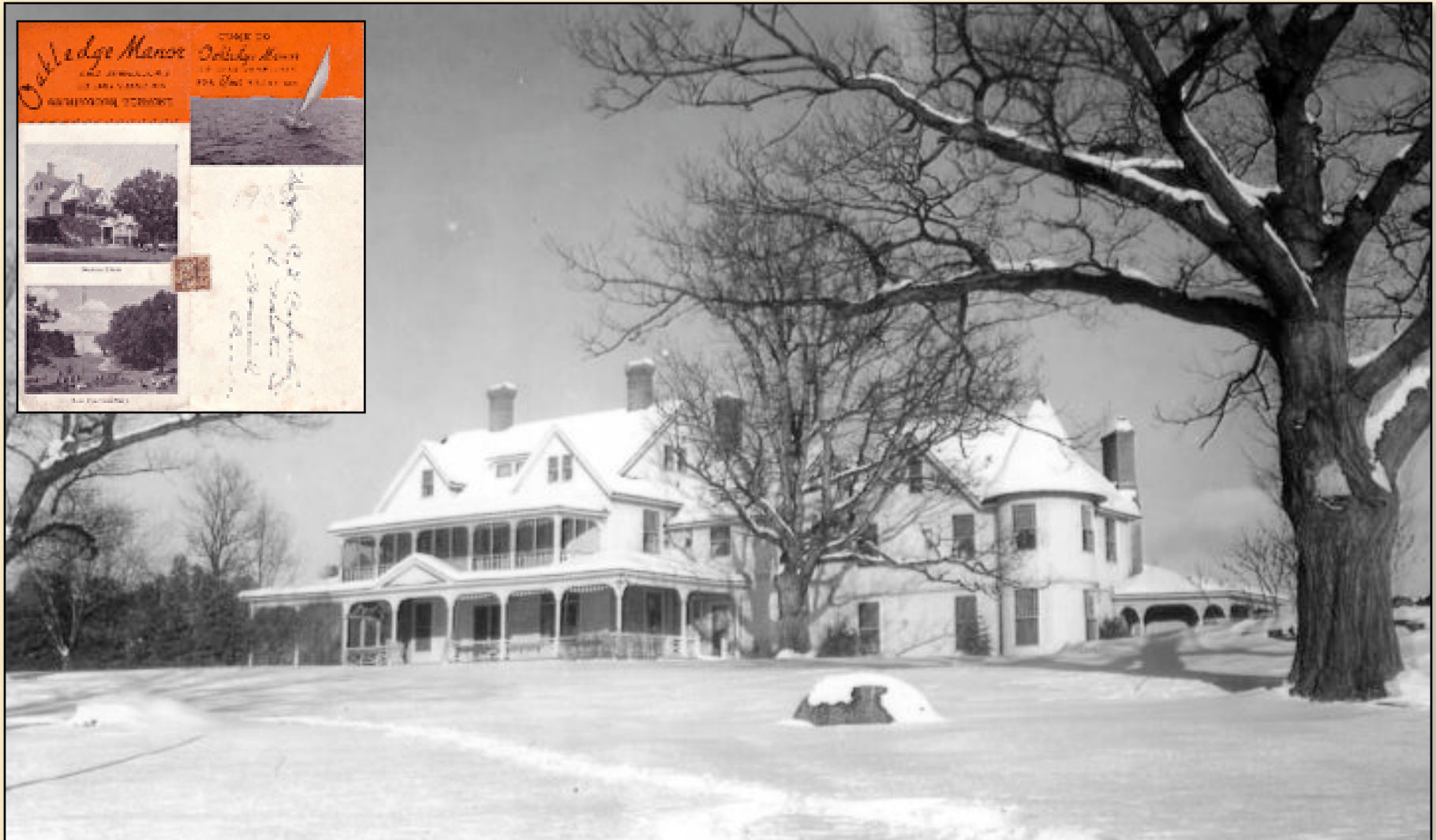


LS01600
Main house at Oakledge in Webb
era looking south
Burlington, 1883

W. K. MENNS,

BURLINGTON, VT.

A place that had many incarnations
and stood for a century.





Planned Blaze Levels Cliffside Building

By CHRISTOPHER HAFNER

The Cliffside Country Club's main building was leveled in a quick but dramatic blaze set by Burlington firemen as a training exercise Monday morning.

Firemen ignited kerosene and gasoline in the clubhouse's main dining room on the first floor at 9:15 a.m.

The fire spread slowly until it reached the kitchen area "and then the whole thing went up," an observer said.

The massive building was engulfed by flames within a half hour and an hour later it was on the ground, Fire Chief Patrick T. Brown reported.

Preparations for the fire included watering down nearby trees for about a half-hour before the clubhouse was torched.

Firemen were aided by an ideal day without wind, Brown said.

If weather conditions had been adverse, he said, the building would not have been destroyed until today.

By Monday afternoon, the fire



THE FORMER mansion stood abandoned just before firemen torched it.

...was gone in an instant

LS10366
The Burning of Oakledge #2
Burlington, 1971

...images allow us
to imagine the
past and learn for
the future



How can you get involved?

- Annotate images
- Locate image sites
- Rephotograph images
- Submit your pictures



Searsburg Post Office, Summer



Comment on This Image

[Close](#)

Your Name:

E-mail address:

Comments:

You'll see your comment on this page as soon as we've reviewed it.

Town:

[Searsburg](#)

County:

[Bennington](#)

Date:

No Date

Description:

The historic image shows two **men** in front of a small pieced-together-building. A handwritten sign on the building reads, "Don't call on Sunday." There are small benches with pots outside the building. Trees are visible behind the building. Please see other related images of the Searsburg **Post Office** in this database including LS001939. Esther Munroe Swift writes on 2005-4-1: The U.S. census for 1820 showed only 8 residents in Searsburg. In the next 50 years the population grew to over 300, but as Abby Hemenway's Gazetteer said "Searsburg is too elevated on the Green Mountains either for cultivation, population or wool growing." Searsburg got it first and only **post office** in 1833 when the population reached 100 and closed 100 years later in 1933 when the population had shrunk back to 100 again. It has not had a **post office** since then. The condition of the **post office** shown in this view is a sad portrait of the town's decline. N.B. In this image and another similar one the same man appears, as does a walking stick propped against the doorframe.



Main Street During the Flood of 1927



RICHFORD, VT.
NOV. 4th. 1927.



Town:

[Richford](#)

County:

[Franklin](#)

Date:

1927 (Nov. 4)

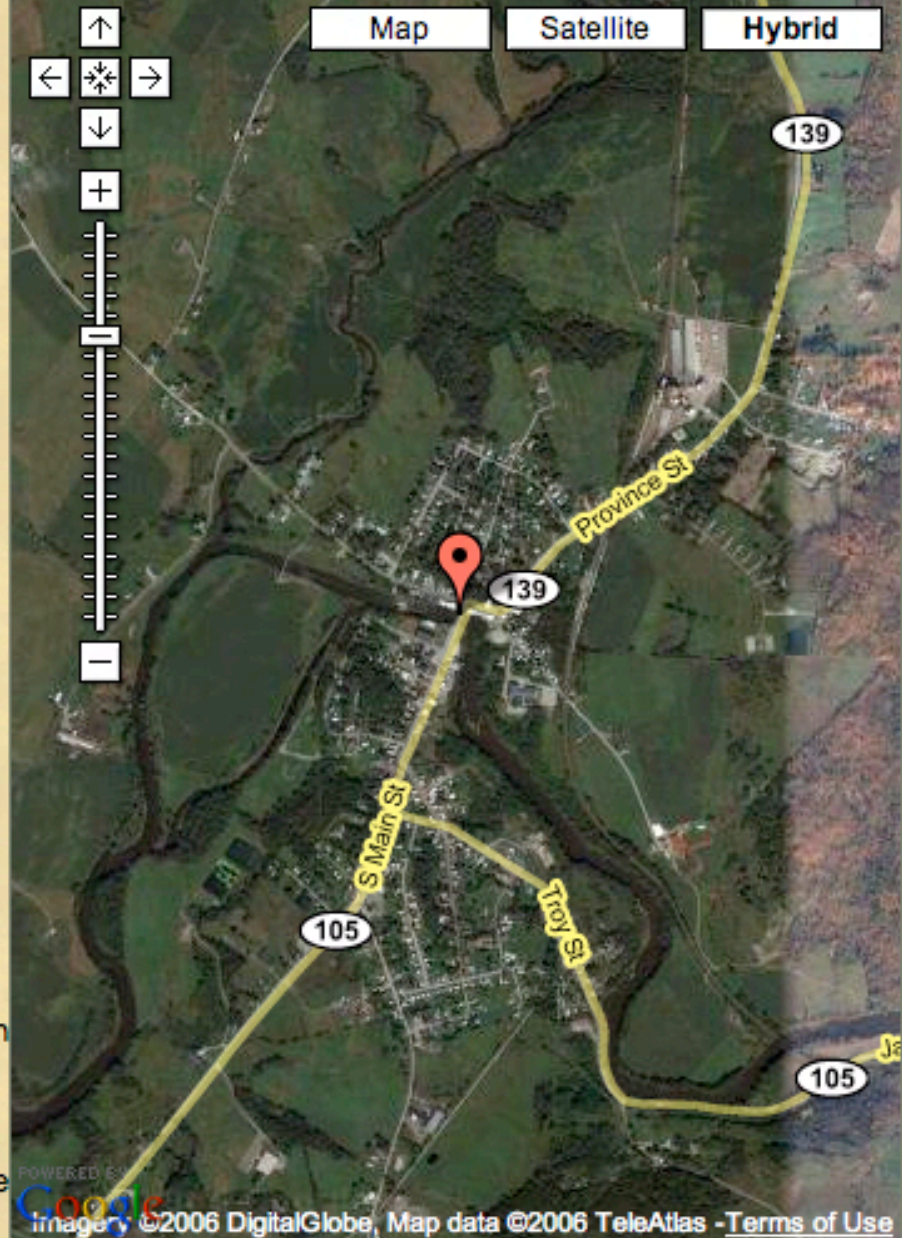
Description:

The historic image shows Main Street underwater during the 1927 flood. A brick building with a coca-cola advertisement painted on its side is being ripped apart in the lower right corner of the photograph. A utility pole with electric lines is being pulled into the floodwaters in the same area. Several other buildings in the foreground of the image are partially submerged in the rushing river water. Debris from ruined buildings has piled up alongside buildings on the right side of the street. There are people and cars parked along Main Street (where the road isn't



Google Map

Close



You can find and rephotograph images

Aerial photograph of the Winooski River after flood

Historic Photograph



Town:
Montpelier

Modern Photograph



Town:
Montpelier

You can contribute images to this community archive



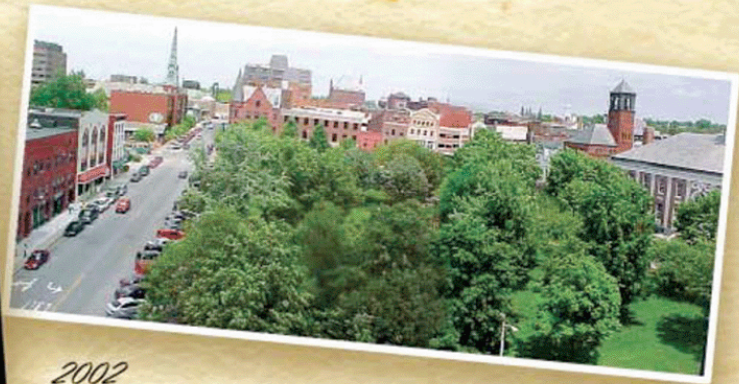
See your town as it was 100 YEARS AGO!

LANDSCAPE
CHANGE
PROGRAM

Burlington's City Hall Park



1859



2002

Marvel at the damage wrought by the 1927 flood. Find pictures of long-vanished farms. View the Green Mountain state clearcut for sheep farming. See landslides, ice jams, mines, and quarries. Visit our collection and search thousands of Vermont images by place, by date, by topic!

www.uvm.edu/perkins/landscape