

**DIGITAL ARCHIVE**

**OF**

***HUMAN-INDUCED***

***LANDSCAPE CHANGE***

**WITH VERMONT K-16 STUDENTS**

**CHRISTINE MASSEY,**

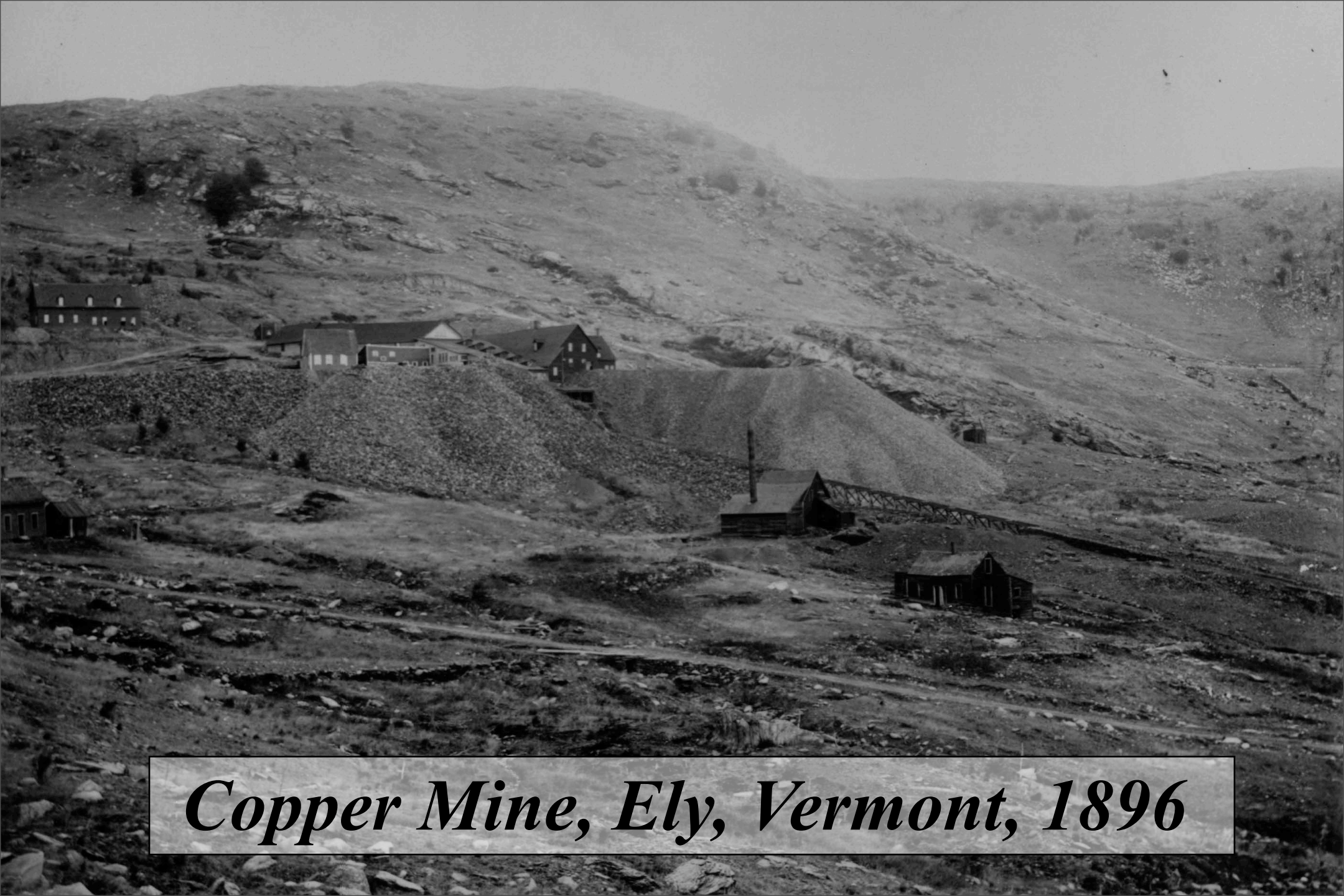
**LAURA MALLARD, and**

**PAUL BIERMAN**

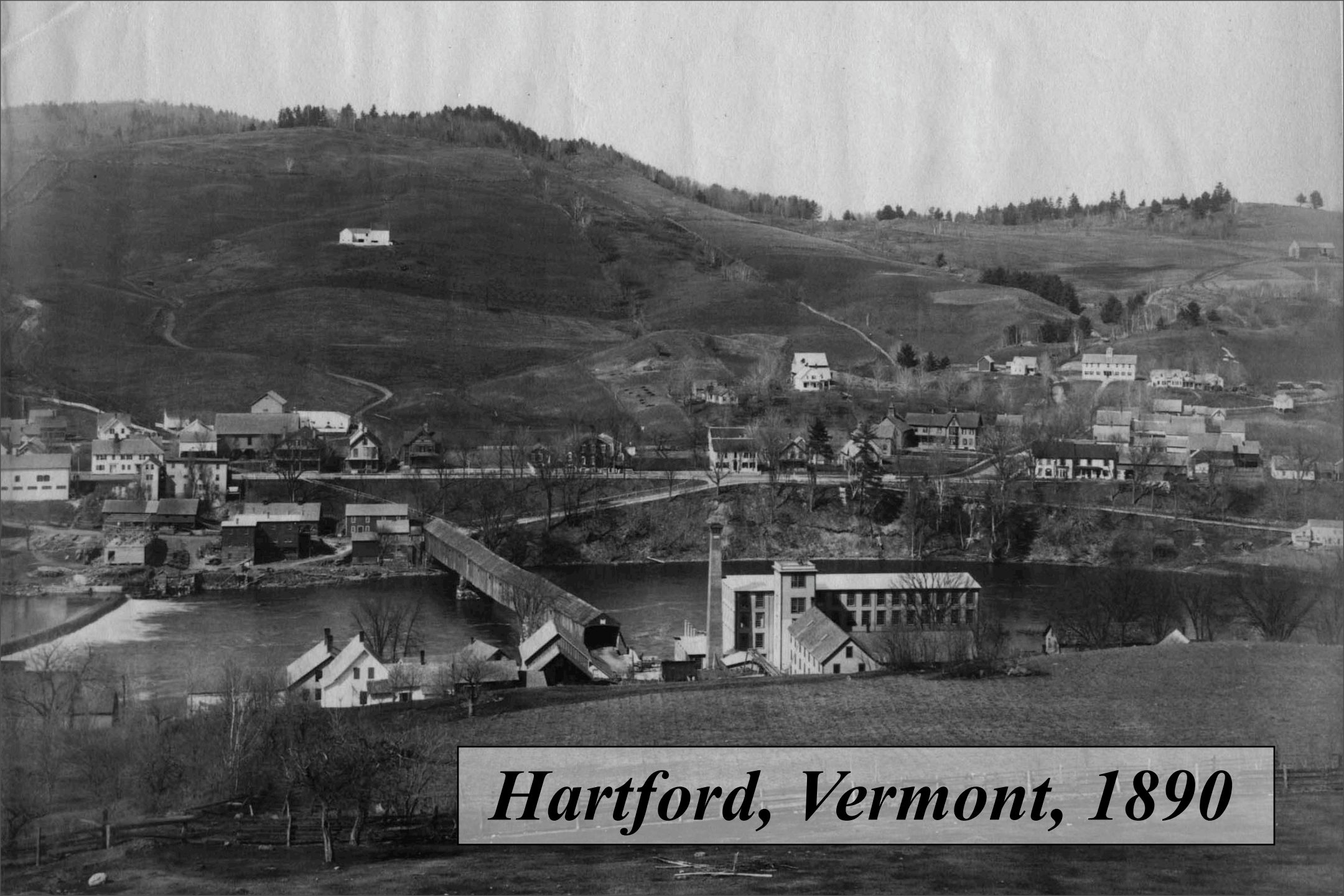
***Perkins Geology Museum—University of Vermont***



*Chelsea Upper Village, Vermont, 1917*



*Copper Mine, Ely, Vermont, 1896*



*Hartford, Vermont, 1890*

# HISTORIC Image



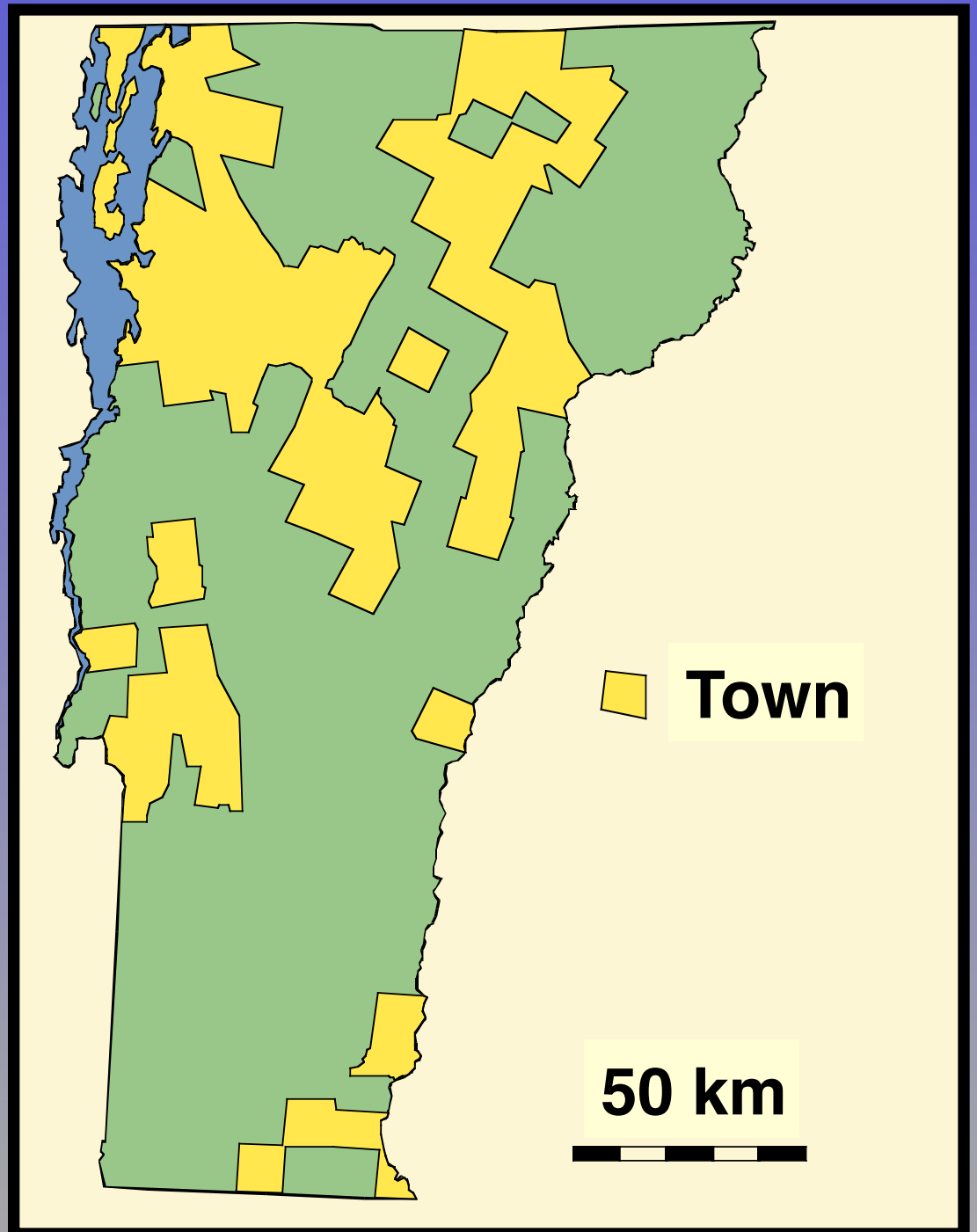
MAD RIVER, MORETOWN, VT. 14.

# MODERN Image



*Mad River, Moretown, Vermont*

# 2000/2001 Vermont Towns



# **30% Town Coverage in Vermont**

- **300 Students**
- **12 Schools**
- **70 of 230 Towns**
- **12 of 14 Counties**
- **270 Image Pairs Archived**

A photograph of a person sitting at a desk in a library or archive, looking at a computer monitor. The monitor displays a website with a map and text. The person is wearing a blue shirt and has their hand on a mouse. The background shows shelves filled with books or papers.

# **DIGITAL ARCHIVE WEBSITE:**

**<http://geology.uvm.edu/landscape>**

Digital Archive  
of Human-Induced  
Landscape  
Change

PERKINS MUSEUM OF GEOLOGY  
UNIVERSITY OF VERMONT

[CALENDAR](#)

[WHO  
ARE WE?](#)

[CONTACT  
US](#)

[COOL  
LINKS](#)

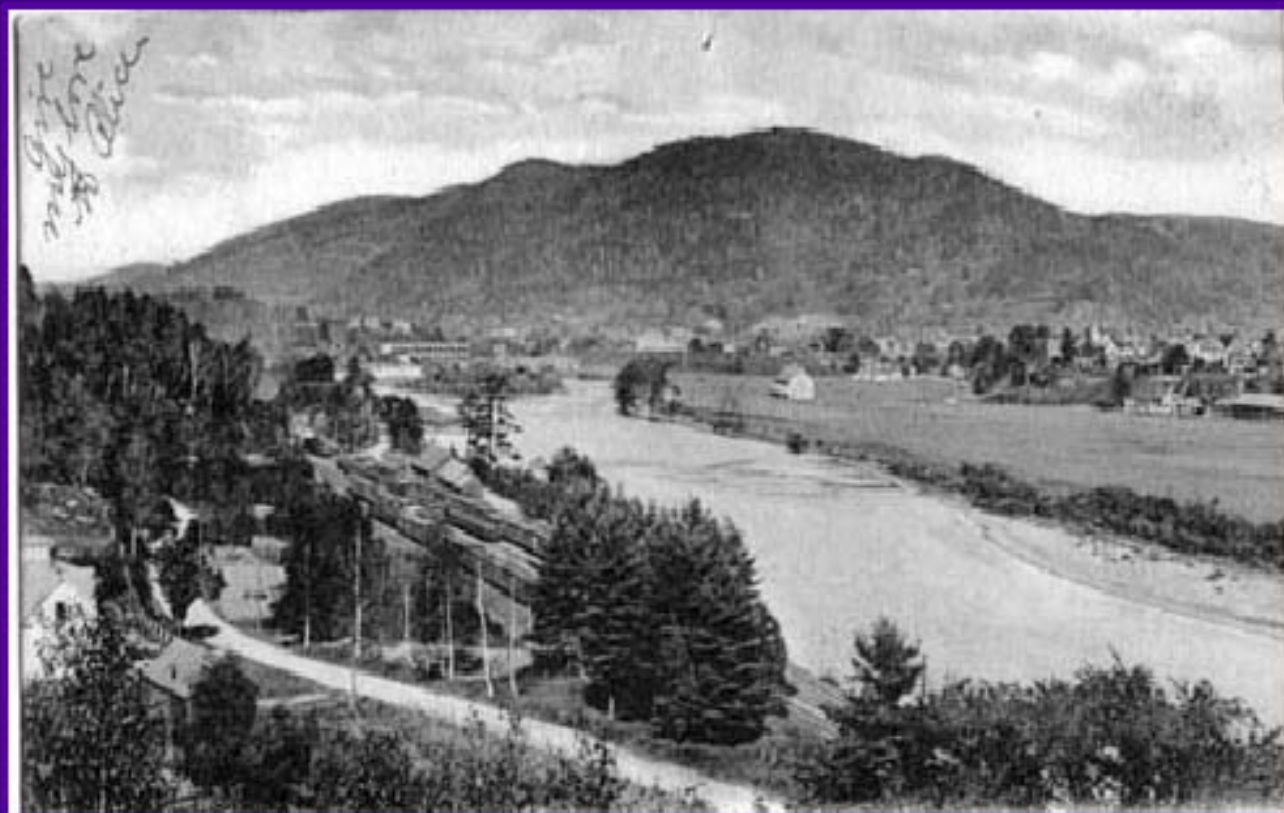
[IS YOUR  
SCHOOL A PART  
OF THE ACTION?](#)

[TEACHER AND STUDENT  
MATERIALS](#)

[WHERE DID VERMONT'S  
LANDSCAPE COME FROM?](#)

[SEARCH THE ARCHIVE BY  
COUNTY AND TOWN](#)

SEARCH THE ARCHIVE  
WITH KEY WORDS

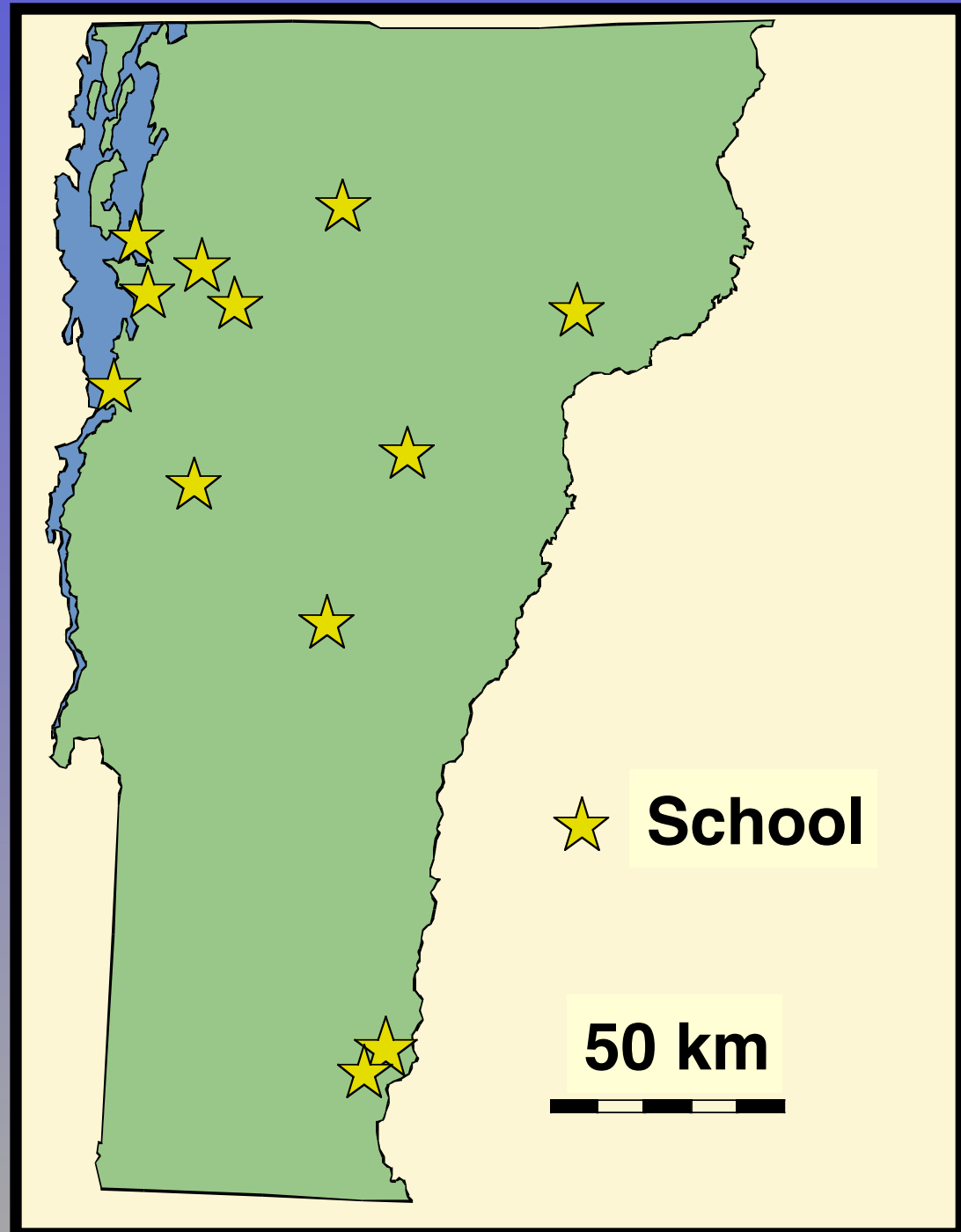


# Project Outline

- **Identify High Schools**
- **Orientation at School**
- **Student Work**
- **Poster Presentations**
- **Teachers Evaluate**
- **Celebration at UVM 2001**

# 2000/2001 Vermont Schools

- Technology Support
- Teacher Manual
- Student Manual
- School Visits



# Project Outline

- Identify High Schools
- **Orientation at School**
- Student Work
- Poster Presentations
- Teachers Evaluate
- Celebration at UVM 2001



# Technology Orientation

# Project Outline

- Identify High Schools
- Orientation at School
- **Student Work**
- Poster Presentations
- Teachers Evaluate
- Celebration at UVM 2001

# Gathering Data





# Scanning Images

# Student Technology

- **iMac Computer**
- **Scanner**
- **Color Printer**
- **Digital Camera**
- **GPS**

# Summer Work

- **UVM Undergraduate**
- **High School Student**
- **Scanned UVM Library's  
Special Collection**  
(stereoviews, postcards, photographs,  
etc.)
- **Re-photographed Sites**

# Reoccupying a Site



# Project Outline

- Identify High Schools
- Orientation at School
- Student Work
- **Poster Presentations**
- Teachers Evaluate
- Celebration at UVM 2001



# Project Outline

- Identify High Schools
- Orientation at School
- Student Work
- Poster Presentations
- **Teachers Evaluate**
- Celebration at UVM 2001

| <b>ESSAY (std. 1.8)*</b>  | <b>Points possible</b> | <b>Points earned</b> | <b>Comments</b> |
|---|------------------------|----------------------|-----------------|
| Old and recent photographs with dates (std. 1.8)                            |                        |                      |                 |
| Locations(town/county) for old and recent photographs                       |                        |                      |                 |
| History of location (agricultural, human settlement) (std. 1.18, 1.19, 6.6) |                        |                      |                 |
| Human impact on location (std. 6.1)   |                        |                      |                 |
| Landscape analysis (std. 7.15, 4.5)   |                        |                      |                 |
| plants  |                        |                      |                 |
| landforms   |                        |                      |                 |
| Grammar/spelling (std. 1.8)   |                        |                      |                 |
| Source of photographs and information                                       |                        |                      |                 |
|   |                        |                      |                 |
| <b>POSTER (std. 5.15, 2.13, 1.2)</b>  |                        |                      |                 |
| Pictures showing landscape (std. 1.2)                                       |                        |                      |                 |
| Essay included (the same as above) (std. 1.8)                               |                        |                      |                 |
| Neat presentation   |                        |                      |                 |
| Title/Your name/Your school   |                        |                      |                 |
| Oral presentation of poster (std. 1.5, 1.9)                                 |                        |                      |                 |
|   |                        |                      |                 |
| <b>COMPUTER FILES (std. 7.17, 2.13, 1.2)</b>                                |                        |                      |                 |
| Pictures  |                        |                      |                 |
| old   |                        |                      |                 |
| recent  |                        |                      |                 |
| Essay (std. 1.8)  |                        |                      |                 |
| Photo data log complete (std. 1.2)  |                        |                      |                 |
|   |                        |                      |                 |
| <b>TOTAL</b>  |                        |                      |                 |
| <b>GRADE</b>  |                        |                      |                 |

**VT**  
**Standards**  
**Rubric**

\* see table of relevant standards for descriptions.

# Project Outline

- **Identify High Schools**
- **Orientation at School**
- **Student Work**
- **Poster Presentations**
- **Teachers Evaluate**
- **Celebration at UVM 2001**

# Closing Ceremony

- **June 2001**
- **300 Students and Parents**
- **Keynote Speaker**
- **Poster Presentations**
- **Natural Science Workshops**
- **UVM Sponsored with Dinner**

# DIGITAL ARCHIVE WEBSITE:

<http://geology.uvm.edu/landscape>

Funding: NSF Grant EAR-9907724 / The Univ. of Vermont



*1927 Flood, Proctor, Vermont*

**VISIT OUR COMPUTER  
DISPLAY WITH MORE DETAILS!**

***WEDNESDAY AFTERNOON***  
**POSTER SESSION**

**WITH**

**LAURA MALLARD**

**LANDSCAPE CHANGE**

**OUTREACH COORDINATOR**

**VISIT OUR**  
***WEDNESDAY AFTERNOON***  
**POSTER SESSION**  
**FOR MORE DETAILS!**

**WITH**  
**LAURA MALLARD**  
**LANDSCAPE CHANGE**  
**OUTREACH COORDINATOR**