

Quick Search for images using one or more words

Landscape Change Program website functions

<http://www.uvm.edu/landscape>

Advanced Search for images



Contribute to the archive

Educational resources learning tools

Information about Program

We've Made TIME TRAVEL Possible.

The Landscape Change Program, at the University of Vermont, is a virtual collection of images that documents 200 years of Vermont's changing face. We have thousands of views of Vermont as it was and as it is, online and free to everyone.

Left: The State House, Montpelier (1874 and 2000). 1874 photo courtesy of the Vermont Historical Society, photo VHS-96.

Enter the website and see how VERMONT has changed!

© 2004. LANDSCAPE CHANGE PROGRAM

website design created by now breed marketing

The UNIVERSITY of VERMONT

PERKINS MUSEUM OF GEOLOGY UNIVERSITY OF VERMONT

Funded by grants from The National Science Foundation and The Lintilhac Foundation

Become a member and save albums of your favorite images and send e-cards

TABLE OF CONTENTS

- SEARCH.....3-4
- VIEWING SEARCH RESULTS.....5
- ICONS.....6
- OPTIONAL ICONS.....7
- HYPERLINKS.....8
- LEARN.....9
- ABOUT.....10

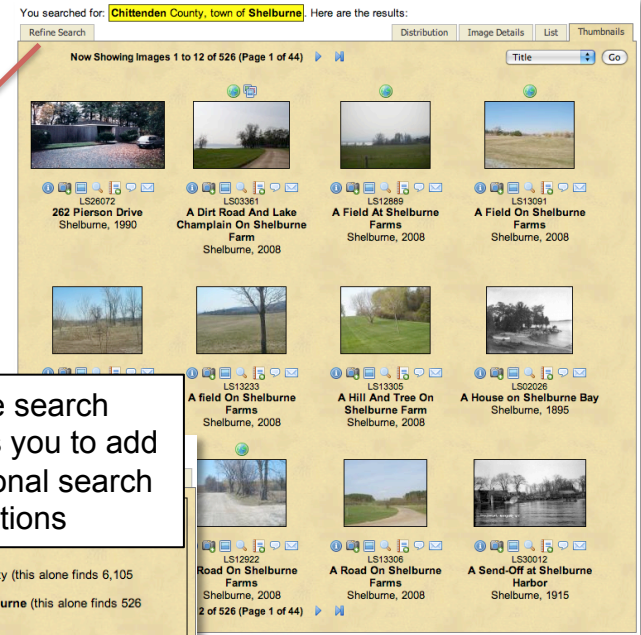
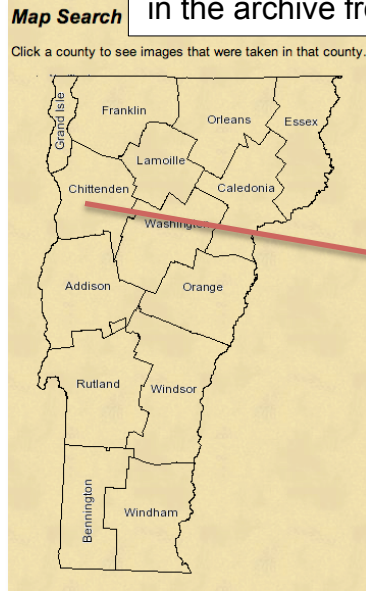
SEARCH

Another way you can refine search results is to use layered searching. This allows you to keep adding search criteria to you search results

Click on any county on the map and pull up all the images in the archive from that county.

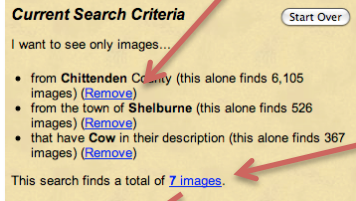
By clicking Chittenden Co. you can then select any town in that county and view all the images from that specific town.

Search results yield all images from the town of Shelburne in Chittenden Co.

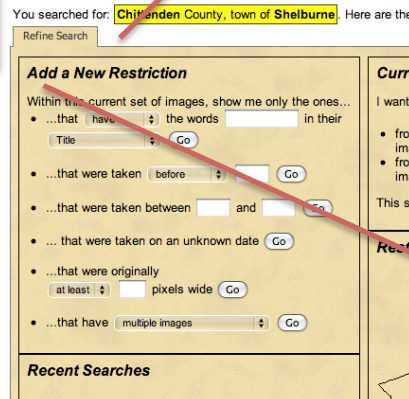


Restrictions can be removed by clicking here

Refine search allows you to add additional search restrictions



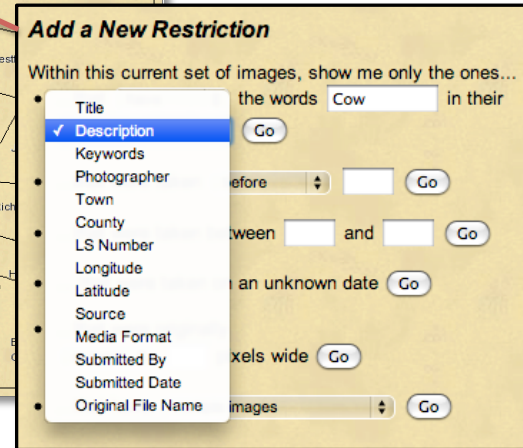
This search yields 7 images, click here to view the thumbnails



Restrict to County



By adding a new restriction you can search the results of previous searches for a new word or phrase. For example, we are now searching for the word "Cow" with the description of all the images in the County of Chittenden and the town of Shelburne.



Search for: **Chittenden County, town of Underhill** Here are the results:

Refine Search

Add a New Restriction

Within this current set of images, show me only the ones...

- ...that have the words in their Title
- ...that were taken before
- ...that were taken between and
- ...that were taken on an unknown date
- ...that were originally at least pixels wide
- ...that have multiple images

Current Search Criteria

I want to see only images...

- from Chittenden County (this alone finds 6,085 images) (Reset)
- from the town of Underhill (this alone finds 229 images) (Remove)

This search finds a total of 229 images.

Restrict to County

Recent Searches

Add new search restrictions to narrow down your search results and find just what you are looking for.

Sort search results by town, county, medium, source, if the location is known or unknown or date. These results can be displayed as a chart or graph.

VIEWING SEARCH RESULTS

Search results appear as a series of thumbnails by default but search results can be arranged and sorted a number of ways

You searched for: **Chittenden County, town of Underhill** Here are the results:

Refine Search

Now Showing Image 2 of 229

Barn on the Mountain

Town: Underhill County: Chittenden State: Vermont

Date: 1860 - 1890

Description:
Here, nearly at the top of Mt. Mansfield is a man, a barn and a wagon. This image was taken just below the nose. Behind the barn is bare rock, schist, standing in steep cliffs. In front of the barn, the ground has been smoothed and there appears to be soil with grass growing on it. There are only a few very small trees or alpine bushes visible behind the barn, otherwise there is no vegetation to be seen.

Filename: LS05062_000.jpg
Size: 560 x 1828 pixels; 2792557 bytes
Original Filename: VAO13391_1.jpg

Keywords:
Barns; Buildings; Culture; Farm buildings; Geology; Human Constructs; Landforms; Mer; Nature; Outcrops (Geology); People; Transportation; Wagons

Source: Special Collections, Bailey/Howe Library, University of Vermont

You can view the details of a specific image

You searched for: **Chittenden County, town of Underhill** Here are the results:

Refine Search

Now Showing Images 1 to 12 of 229 (Page 1 of 20)

Thumbnail Sort Menu:

- Title
- Date
- Town
- County
- LS Number
- File Size
- Submit Date ↑
- Submit Date ↓
- Source

Thumbnail 1: Alice at Taft Lodge Underhill, 1910

Thumbnail 2: Barn on the Mountain Underhill, 1875

Thumbnail 3: Bird's Eye View From Mt Mansfield Underhill, 1962

Thumbnail 4: Bird's Eye View of the Clouds Underhill, 2006

Thumbnail 5: Bird's Eye View of Smuggler's Notch Underhill, 1963

Thumbnail 6: Boys in front of Taylor Lodge Underhill, 1969

Thumbnail 7: Bridge in Town Center Underhill, 2000

Thumbnail 8: Cantilever Rock, Mount Mansfield Underhill, 1961

Thumbnail 9: Catwalk over the mud on the Sunset Ridge Trail Underhill, 1970

Thumbnail 10: Cavalry U.S.A. Camp Underhill, 1917

Sort search results a number of ways

Clicking on a column header sorts the list by the column

You searched for: **Chittenden County, town of Underhill** Here are the results:

Refine Search

Summarize Results By: Medium (photograph, postcard, ...)

Media	Image in Your Search	Database	Location (Known / Not Known)
(linen) postcard	0	1	0.0
35mm Slide	0	431	0.0
Aerial Photograph	0	487	0.0
Amrotype	0	2	0.0
Digital Photograph	34	2407	1.4
Drawing	0	169	0.0
Engraving	0	8	0.0
Film Negative	0	3706	0.0
Glass Negative	2	1738	0.1
Lanternslide	44	1141	3.9
Lithograph	0	8	0.0
Map	0	27	0.0
Negative	0	82	0.0
Painting	5	50	10.0
Photograph	78	18575	0.5
Postcard	12	3864	0.3
Postcards	0	107	0.0
Promotional picture	0	1	0.0
Steel Engraving	0	1	0.0
Stereoview	54	2545	2.1
Unknown	0	29	0.0

Search results can be displayed as a list that can be sorted by Title, Date, Town, County, Source or LS Number

You searched for: **Chittenden County, town of Underhill** Here are the results:

Refine Search

Date	Town	County	Source	LS Number
1910	Underhill	Chittenden	Special Collections, Bailey/Howe Library, University of Vermont	LS19038_000
1875	Underhill	Chittenden	Special Collections, Bailey/Howe Library, University of Vermont	LS05062_000
1962	Underhill	Chittenden	Special Collections, Bailey/Howe Library, University of Vermont	LS05965_000
1911	Underhill	Chittenden	Special Collections, Bailey/Howe Library, University of Vermont	LS19038_000
2006	Underhill	Chittenden	Special Collections, Bailey/Howe Library, University of Vermont	LS05062_000
1963	Underhill	Chittenden	Special Collections, Bailey/Howe Library, University of Vermont	LS05965_000
1969	Underhill	Chittenden	Special Collections, Bailey/Howe Library, University of Vermont	LS12761_000
2000	Underhill	Chittenden	Special Collections, Bailey/Howe Library, University of Vermont	LS00360_000
1961	Underhill	Chittenden	Special Collections, Bailey/Howe Library, University of Vermont	LS25978_000
1970	Underhill	Chittenden	Special Collections, Bailey/Howe Library, University of Vermont	LS12772_000
1917	Underhill	Chittenden	Special Collections, Bailey/Howe Library, University of Vermont	LS01056_000
1974	Underhill	Chittenden	Special Collections, Bailey/Howe Library, University of Vermont	LS07919_000
1915	Underhill	Chittenden	Special Collections, Bailey/Howe Library, University of Vermont	LS14807_000
1910	Underhill	Chittenden	Special Collections, Bailey/Howe Library, University of Vermont	LS19040_000
1996	Underhill	Chittenden	Special Collections, Bailey/Howe Library, University of Vermont	LS26052_000
1906	Underhill	Chittenden	Special Collections, Bailey/Howe Library, University of Vermont	LS07577_000
1940	Underhill	Chittenden	Special Collections, Bailey/Howe Library, University of Vermont	LS08109_000
1940	Underhill	Chittenden	Special Collections, Bailey/Howe Library, University of Vermont	LS08108_000
1940	Underhill	Chittenden	Special Collections, Bailey/Howe Library, University of Vermont	LS08109_000
1975	Underhill	Chittenden	Special Collections, Bailey/Howe Library, University of Vermont	LS08462_000
2006	Underhill	Chittenden	Special Collections, Bailey/Howe Library, University of Vermont	LS08462_001
2006	Underhill	Chittenden	Special Collections, Bailey/Howe Library, University of Vermont	LS08462_002
1875	Underhill	Chittenden	Special Collections, Bailey/Howe Library, University of Vermont	LS04815_000
1875	Underhill	Chittenden	Special Collections, Bailey/Howe Library, University of Vermont	LS05379_000
1920	Underhill	Chittenden	Special Collections, Bailey/Howe Library, University of Vermont	LS14474_000
2000	Underhill	Chittenden	Special Collections, Bailey/Howe Library, University of Vermont	LS00858_001
1906	Underhill	Chittenden	Special Collections, Bailey/Howe Library, University of Vermont	LS00858_000
1906	Underhill	Chittenden	Special Collections, Bailey/Howe Library, University of Vermont	LS07578_000
1935	Underhill	Chittenden	Special Collections, Bailey/Howe Library, University of Vermont	LS06184_000
1996	Underhill	Chittenden	Special Collections, Bailey/Howe Library, University of Vermont	LS12565_000
1875	Underhill	Chittenden	Special Collections, Bailey/Howe Library, University of Vermont	LS05089_000

ICONS

You searched for: **each image in da**

Refine Search

Now Showing Image 1 of 2

LS02510_000



white clouds. Note the contrast between conifers and deciduous trees...photo overexposed?

Full Screen View

Info Icon: Displays a page showing all the information we have about an image

[Shorelines](#); [Mountains](#); [Fall](#); [Conifers](#); [Culture](#); [Deciduous](#); [Electric lines--Poles and towers](#); [Forest plants](#); [Forests and Plants](#); [Geology](#); [Hills](#); [Human Constructs](#); [Lakes](#); [Landforms](#); [Landscapes](#); [Living Things](#); [Mountains](#); [Nature](#); [Plants](#); [Roads](#); [Roads,Earth](#); [Rural](#); [Trees](#);

Source:

[Old Stone House Collection](#), [Old Stone House Museum](#)

Submitted By:

Jens Hilke

Submitted On:

2004-04-28

Original Media:

Postcard

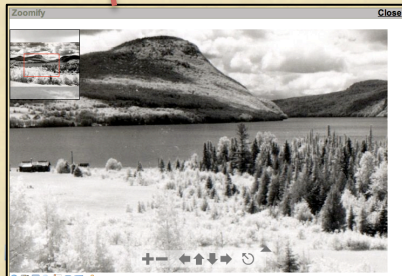
Relative Dating Rationale:

Postcard

Times viewed:

2985

Now Showing Image 1 of 29106



Magnifying Glass Icon: Lets you zoom in to see image details

Contribute to the Archive

[INTRODUCTION](#) [WHAT YOU NEED](#) [SUBMIT A PHOTO](#)

What do you want to submit?

Submit a Reshot Image

Reshots attempt to document changes to existing images already in the Landscape Archive. Each image in the archive has a unique LS number. Have a jpeg image of your reshot ready. Enter the LS number of the existing image below.

02510

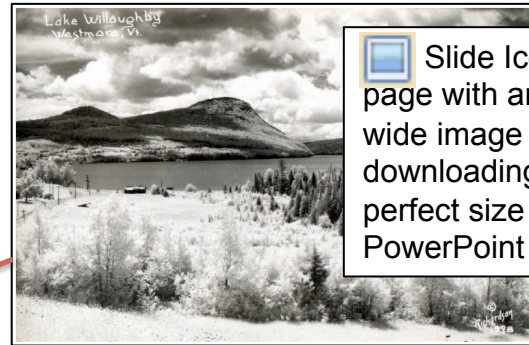
Example: LS01234

Air View, Lake Willoughby

1907 - 1915

Description:

This photo captures a bird's eye view of Lake Willoughby and the mountains that border it on both sides. The foreground is a field with wildflowers with a hedgerow of mostly deciduous trees. Beyond more fields lead to some shoreline woods of both deciduous and evergreen trees. To the left a road, lined with power line poles, heads towards the lake shore and past a building. The hills on the far shores of the lake are wooded with the exception of a cleared patch to the left. In the distance two steep mountains rise up from the shore of the lake. The sky is full of dramatic white clouds. Note the contrast between conifers and deciduous trees...photo overexposed?



Slide Icon: Opens a page with an 800 pixel wide image suitable for downloading (this is the perfect size for a PowerPoint slide)

Envelope Icon: Lets you email the image as an "E-card" to a friend

LS02510_000

Air View, Lake Willoughby

Town: [Westmore](#) County: [Orleans](#) State: Vermont

Send an E-Card

Recipient:
Name:
Email address:

Card:
Greeting (optional):
Message:

Closing (optional): From,

Sender:
Your name:
Email address:

Speech Bubble Icon: Lets you comment on an image, comments are incorporated into the image descriptions

LS02510_000

Air View, Lake Willoughby

Town: [Westmore](#) County: [Orleans](#) State: Vermont

Comment on This Image

Your Name:

E-mail address:

Comments:

You'll see your comment on this page as soon as we've reviewed it.

Album Icon: Lets you add an image to an album, to help organize your favorite images

LS02510_000

Air View, Lake Willoughby

Town: [Westmore](#) County: [Orleans](#)

Date: 1907 - 1915

Description:
This photo captures a bird's eye view of Lake Willoughby and the mountains that border it on both sides. The foreground is a field with wildflowers with a hedgerow of mostly deciduous trees. Beyond more fields lead to some shoreline woods of both deciduous and evergreen trees. To the left a road, lined with power line poles, heads towards the lake shore and past a building. The hills on the far shores of the lake are wooded with the exception of a cleared patch to the left. In the distance two steep mountains rise up from the shore of the lake. The sky is full of dramatic white clouds. Note the contrast between conifers and deciduous trees...photo overexposed?

Add to Album

Add To:

Create a new album:
Comment (optional):

OPTIONAL ICONS

These icons only appear on images that have the related information

LS13485_000



Climbing Mt. Mansfield

Town: [Stowe](#) County: [Lamoille](#) State: Vermont

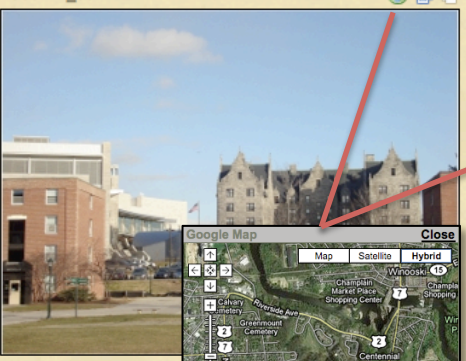
Date: 2004

Associated Documents Close


1. [Mt. Mansfield](#)
(Type: video; Format: video/quicktime) Video from the top of Mt. Mansfield standing on the rocky summit. There are grasses, small abeth is long pants are are The sky is visible on the

Film Icon: watch a movie clip related to an image with this icon

LS09711_002

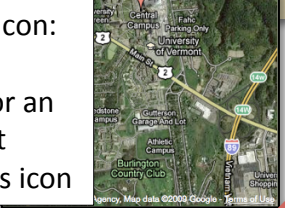


LS09711_000



Multiple images Icon: view a reshoot, of the same location for images with this icon

Earth Icon: view the location for an image that display this icon



Associated Documents Close

1. [Web article about Danby tunnel](#)
(Type: Web page; Format: text/html) THE BUILDER'S REPUTATION IS SAFE INSIDE VERMONT'S MARBLE MOUNTAIN New Underground Fabrication Works Assures Continued Production of an Indispensible American Building Stone.

LS02874_000



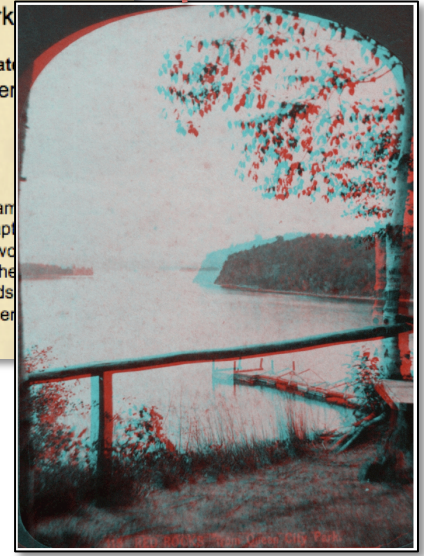
3D Icon: view a stereoview in 3D by looking at the image with 3D red/blue glasses for images displaying this icon

Stereoview from Queen City Park

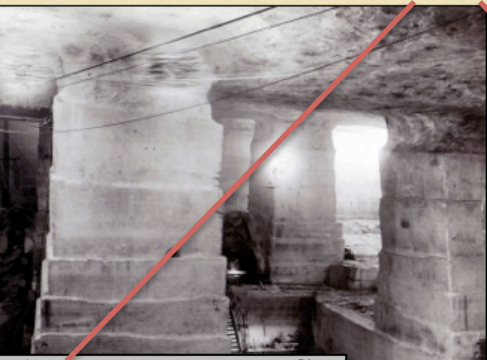
Town: [Burlington](#) County: [Chittenden](#) State: Vermont

Date: 1860 - 1890

Description:
Steroview of Red Rocks and lower Lake Champlain from Queen City Park. The historic image captures cliffs of Red Rocks to the right. The point is where the foreground a wooden dock can be seen on the through the wooden fence. A birch tree stands from where this photo was taken. Is that the wooden bench, to the right?



LS02206_000



Inside Danby Quarry

Town: [Danby](#) County: [Rutland](#)

Date: 1860 - 1920

Associated Documents Close

1. [Danby Marble](#)
(Type: text; Format: application/pdf) This is a short paper about the Danby quarries written by UVM student Christine Hertz for GEOL 196 in winter 2007.

Documents Icon: view a web article about the image with this icon

PDF Icon: view a PDF document related to the image displaying this icon

Sounds Close

Danby Marble interview
Vermont public radio discussion of Danby Marble tunnel


Audio Icon: Listen to a sound clip related to the image with this icon

HYPERLINKS

All words that appear as blue text in the archive are hyperlinks that take you to all other images with that specific work in that given field.

Now Showing Image 1 of 33207

LS19969_000



Middlebury in Winter

Town: [Middlebury](#) County: [Addison](#) State: Vermont

Date: 1939?

Description:
This aerial image shows Middlebury in winter. There is a road in the center of the image and along it there are forests, fields, wooden houses and farm buildings. Surrounding the road and populated area are open fields and hills. All image rights reserved to Henry Sheldon Museum, www.henrysheldonmuseum.org.

Filename:
LS19969_000.jpg

Size:
2161 x 1470 pixels; 1943035 bytes

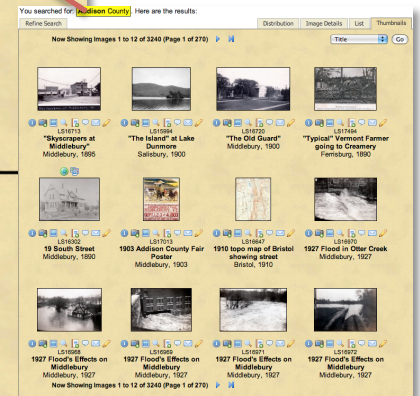
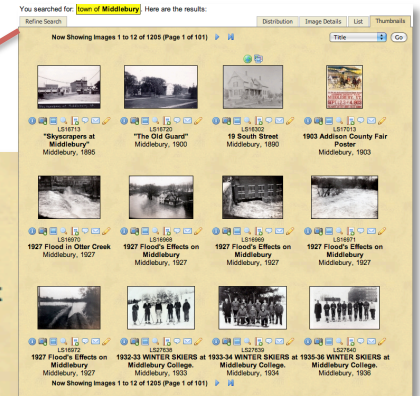
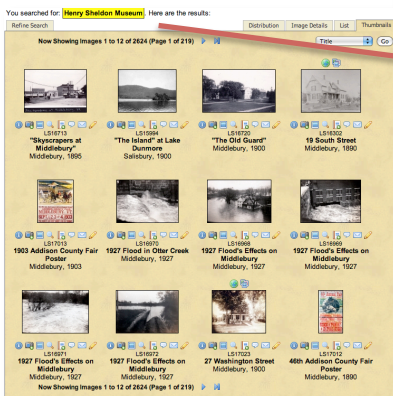
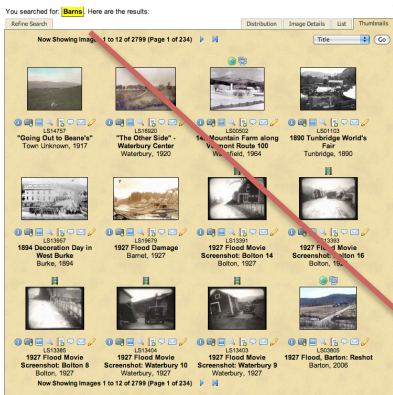
Original Filename:
SMKS064.jpg

Original Metadata:
Aerial photos c.1939

Keywords:
[Barns](#); [Buildings](#); [Chimneys](#); [Church buildings](#); [Conifers](#); [Culture](#); [Deciduous](#); [Dwellings](#); [Farm buildings](#); [Forests and Plants](#); [Geology](#); [Grassland plants](#); [Hills](#); [Human Constructs](#); [Landforms](#); [Landscapes](#); [Living Things](#); [Meandering rivers](#); [Nature](#); [Pasture plants](#); [Plants](#); [Rivers](#); [Roads](#); [Roads,Earth](#); [Season](#); [Snow](#); [Time](#); [Trees](#); [Village communities](#); [Winter](#); [Wooden-frame buildings](#);

Source:
[Henry Sheldon Museum](#)

Photographer:
[George Lathrop](#)



LEARN

Useful educational resources

Learn

[LEARN-HOME](#) [THEMATIC PHOTOS](#) [LEARNINGLANDSCAPES](#) [LESSON PLANS](#) [VT LANDSCAPE HIST.](#) [BIBLIOGRAPHY](#)
[TUTORIALS](#) [PHOTO INTERPRETATION](#) [RESHOOTING PHOTOS](#) [DOWNLOADING PHOTOS](#) [DATING PHOTOS](#) [COPYRIGHT](#)

Educational Resources

- Thematic Photo Sets** Includes educational [modules](#) (Learning Landscapes, 1927 Flood Aerials, Challenge Park History & Significance, Shovelers Landscape Change, Dating Photos, [Thematic](#)) collections of historic photos by topic (Floods, Mining, Trees), and student [scrapbooks](#) on various topics.
- Learning Landscapes Rivers Curriculum** Link to an on-line modular curriculum that uses historic images related to rivers and fluvial processes. Developed for UNH's Geomorphology course. Register using course code "development".
- Lesson Plans** Includes individual lesson plans, a larger Unit Plan, and links to accompanying materials and other resources.
- Vermont Landscape History** Includes movies, podcasts, tutorials and handouts on geologic, landscape, and settlement history.
- Bibliography** Includes citations for a wide range of relevant journal articles, books, and other media.
- Links** includes several categories of links, including: geology, cultural history, natural history, educational, and general.

Using Photos

- Tutorials** Includes units on 1) Introduction to the LCP Archive, 2) Vermont Geology and Landscapes, 3) How People and Geology Shape the Landscape, 4) Describing Images, and 5) Dating Images.
- Photo Interpretation** Offers some advice about what to look for and questions to ask about historic landscape images.
- Reshooting Photos (handouts)**
- Downloading Photos** Describes how to download images from this site and the quality of the photos that can be printed or downloaded.
- Dating Photos** Shows how to use the historic context of photos to date images of unknown age. Created by an historic preservation expert.
- Copyright Issues** Details how to use these images, where to get source permission, and what information to include in your request.

Thematic Photo Sets

Modules We have several groups of images within the larger collection that have additional interpretation and resources associated with them. Modules are housed on separate web pages.

PowerPoints We have collections of images within thematic PowerPoint presentations.

Scrapbooks We have student projects related to single themes. Presentations are available in multiple formats (pdf, ppt, mov, and swf).

PowerPoints (downloads)

These PowerPoint presentations highlight groups of photos without additional interpretation or added text. Various students and staff have authored these thematic PowerPoints. See also [Videos](#), [Scrapbooks](#).

Historic Flood Images This set of images is a PowerPoint/slideshow including dramatic flood photos with titles and 15.5 MB

Historic Images This set of images is a PowerPoint/slideshow showing mining photos with titles and 14.0 MB

Historic Photos This set of images is an annotated PowerPoint/slideshow highlighting images of trees and their uses in Vermont. 19.1 MB

Historic Photos This set of images is an annotated PowerPoint/slideshow highlighting photos with titles. 18.7 MB

Scrapbooks

These student projects are available in multiple formats (pdf, ppt, mov, and swf). They are housed on separate web pages.

Learning Landscapes
University of Vermont

Earth's surface is beautiful and wonderfully complex. Almost every one of us lives on landscapes, working, playing, hiking, climbing and safely, taking landscapes.

Click, Look, a waterfall. Click, There's a flood. Click, Towering mountains.

We'll use 100 years of photographs to examine our planet and understand how it works, learning landscapes from the human perspective. Come in and join us on this virtual trip across Earth's amazing surface.

Department of Geology
University of Vermont
U.S. (802) 696-4411
studgeom@uvm.edu

Lesson Plans from Local Teachers

These are "in-class" lessons developed in 2006 and 2007 by Vermont K-12 teachers in curriculum development workshops at the University of Vermont.

Science	Literature/Arts	Social Science
"Geo-Sneakers" Geology Grades 4-5 by Claire Drouot (pdf) (doc)	Before and After Stories Storytelling Grades 4-5 by Alison Novak (pdf) (doc)	Photo Detectives Town History Grades 4-5 by Janet Bellevance (pdf) (doc)
Reading Rivers Over Time Geology Grades 3-4 by Matt Drouot (pdf) (doc)	Our Changing Community Conducting Research Grades 3-4 by Pat O'Brien (pdf) (doc)	There's More Than One Way to View a Photo Photo Interpretation Grades 3-4 by Heather Morrison (pdf) (doc)
Identifying Landforms Physical Geography & Technology Grades 3-2 by Tim Bourne (pdf) (doc)	"Sense of Place" Senior Language Grades 3-2 by Sarah Fary (pdf) (doc)	What's the D&M Project People's Impact Grades 3-2 by Tim Bourne (pdf) (doc)
Then and Now...and in the Future Resilience and Sustainability Grades 7-8 by Catherine Wambolt (pdf) (doc)	I See Dead People (and So Do We) Boreal Digital Stories Grades 5-8 by Debra McConnell (pdf) (doc)	Transportation and Change in Wildcat Local History Grades 5-8 by Richard Allan (pdf) (doc)
Dams, Logging, Erosion...Oh My! Waterways Grades 5-12 by Brent Skyles (pdf) (doc)	School Days Gettin' Schools Then and Now Grades 5-12 by Christine Frymer (pdf) (doc)	Time Travel Local History & Literacies Grades 5-12 by David Scholtes (pdf) (doc)
Finding the Forest through the Trees Forest Succession Grades 10-12 by Maureen McAndrews (pdf) (doc)	What's An Anthology of Place Grades 10-12 by Becky Edel (pdf) (doc)	What Have We Here? Artifacts Grades 10-12 by George Olson (pdf) (doc)
Rocks, Roads, and Remediation Grades 10-12 by Abby Hood (pdf) (doc)		"It Takes an Image of a Village" History Building the Future Vermont Sustainability Grades 10-12 by Scott Evert Bealwith (pdf) (doc)

Vermont Landscape History

Landscape History Resources

[Vermont Geology and Landscapes](#)
An in-depth tutorial.

[How People and Geology Shape the Landscape](#)
An in-depth tutorial.

[Vermont's Geologic History](#)
A brief timetable of major events.

[Vermont's Settlement History](#)
A brief timetable of events until 1771.

[Vermont's Changing Landscapes](#)
Podcast, UVM Aiken lectures, Jan Albers and Darby Bradley.

[Vermont's Past and Future Landscapes](#)
Podcast, VPR Switchboard Program with Paul Bieman and Bob McCullough

[Fields, Forest and Farmland](#)
UVM Extension Television program about Landscape Change in Vermont.

[Vermont's Geology](#)
Podcast, VPR Switchboard Program with Char Mehtrens and Larry Becker gives us glimpse at the rock formations in our midet.

Bibliography Resources

Use the LCP Archive to find a list of authors of the photos that you are using. This list includes a list of authors, their contact information, and a list of their other work. This list is available in PDF format. See [How to Use the LCP Archive](#) for more information.

Geology

- Allen, J. A. & Kelly, J. W. 1998. *Geology of Vermont*. State University of New York, Albany, NY.
- ... (many more entries)

Mapping and Map Making

- ... (many more entries)

Photography

- ... (many more entries)

Private Photo Guides

- ... (many more entries)

LEARN-HOME **THEMATIC PHOTOS** **LEARNINGLANDSCAPES** **LESSON PLANS** **VT LANDSCAPE HIST.** **BIBLIOGRAPHY**
TUTORIALS **PHOTO INTERPRETATION** **RESHOOTING PHOTOS** **DOWNLOADING PHOTOS** **DATING PHOTOS** **COPYRIGHT**

Tutorials

These tutorials provide in-depth "how-to" information for a variety of topics related to the LCP Archive and photographic and topographic and landscape interpretation.

- [Introduction to the LCP Archive \(Unit #1\)](#) by Paul Bierman, UVM Faculty
- [Vermont Geology and Landscapes \(Unit #2\)](#) by Paul Bierman, UVM Faculty
- [How People and Geology Shape the Landscape \(Unit #3\)](#) by Paul Bierman, UVM Faculty
- [Describing Images \(Unit #4\)](#) by Paul Bierman, UVM Faculty
- [Dating Historic Images](#) by Elizabeth Andre, MD UVM Historic Preservation

Links

- General
- Natural History
- Mapping
- Cultural History
- Geology
- Educational
- Photo Archives

Reshooting Photographs

Reshooting Resources

[Reshooting Instructions](#)

This is an instructional document, providing instructions on how to reshoot images in the Landscape Change Program archive.

[Reshooting Project](#)

This is a handout detailing an activity of taking historic/current photo pairs.

[Latitude and Longitude Help sheet](#)

This handout gives basic information about terms and concepts.

Dating Historic Images

Using historic images captured primarily with digital photography. Our handy tips convert digital images into our computers directly into folders with the exact date and time. What about those years ago? Or one hundred? Or even one hundred and fifty years ago? We can hope that people recorded the date and event, and our site is going to help you!

So, what can you do with an old photograph and its date? Well, you can document the date, and our site is going to help you! Photographs are filled with evidence that tell a story about that landscape in time. What is that evidence? It is the subject, the environment, the people, the things we wear, it is the natural spectacles, the things we see, the things we do, the things we are doing. You see in an historic image is an important clue to its date. Look at the photograph below. A myriad of important features can lead us to a date: the water, the rocks, the hills, the sky, the ground, the clouds, the trees, the people, the buildings, the cars, the boats, the birds, the animals, the plants, the things we see, the things we do, the things we are doing. The information provided in this site will help you identify the dates of the features in your historic image.

[Get Started!](#) [Read the Tutorial!](#)

Ferris's Overlook, Vermont, 1917

Copyright Issues

These images belong to a variety of organizations. When searching for photos, you'll see that the organization who owns or holds the photo is listed under each image beside the word "Source". Rights to these images are strictly protected. Whether you print, use, or display an image or a digital form (shown on a screen) or printed form, the image still belongs to the source organization. Respect their rights to these images. Please contact the source organization to use these images. For any photo that has become over three months on this page, please contact the [Landscape Change Program](#) for the LCP Archive. PURPOSE: These images may be displayed and used as a learning tool and field copies may be printed in the course of interpreting the historic images.

Thanks to the URL, the web address of the image) when you email or write. Simply copy the address that is listed in your browser window when you're displaying the photo you're interested in. At the end of the URL, the web address is the LICENSE. That's a crucial identifier that we use to track images.

If you're interested in several photos list the LCPs when emailing.

Where to get permission to use photos.

Source Organizations

- Cambridge Historical Society
- ... (many more entries)

Downloading and Using Images

Copyright Issues

These images belong to a variety of organizations. When searching for photos, you'll see that the organization who owns or holds the photo is listed under each image beside the word "Source". Rights to these images are strictly protected. Whether you're using these images in a digital form (shown on a screen) or printed form, the image still belongs to the source organization. Respect their rights to these images. Please contact the source organization to use these images by checking the link to their [Copyright](#) section.

For any photo that has a source other than those posted on our copyright page, please email the [Landscape Change Program](#).

For EDUCATIONAL PURPOSES any image may be displayed and used as a learning tool and field copies may be printed for use while reprographing historic images.

How do I save images?

Those wishing to save and print low resolution versions of the photos for use in reshooting the historic photos or as part of a class project can do so. PC users can right click on the image and "Save Picture As..." Mac users should go to the file menu and "Save Picture As..."

Image Quality

Photos on this website are shown at screen resolution. That means that the printed version is of a significantly lower quality than what appears on the screen of a computer. To access full quality digital versions or the actual print, please contact the source organization. See our [Copyright](#) page for the list of sources.

Photograph Interpretation

Please try to submit on [Discussion Issues](#) by Paul Bierman, UVM Faculty

When viewing photos, ask yourself questions about these topics:

- Level Use** How did people live? What part of the land was people using? Where were they farming? What were they doing?
- Geology** What does the surface of the landscape look like? Are there obvious surface processes such as landforms or erosion? Is the terrain eroded, raised or reworked? Where is the water coming from?
- Ecology** What plants are in the photo? What sort of wildlife can be seen or inferred?
- Ecology** What sort of patterns can be seen in a landscape and non-living things in the photo? Are the plants continuous to the same in the historic and current photos? Are species arranged in the same way as we see them today?
- History** How did people live? What was going on in a state, national or world history at the time the photo was taken? What sort of technology is evident? What do the buildings look like?
- Geography** How can we relate how people are living with the environment in which they live? How is the natural environment settling or deteriorating the location of various human activities in the photo? What is the natural response or one response (floods, erosion) that has about the landscape when it comes? How are any people using their landscape?
- Context** Why was the photo taken? What particular feature was the photographer emphasizing? What do you know about the photographer?

Looking at photos Try to read the subject of the photo that shows your best friend's car, but also be sure to pay attention to other details of the photo. Does the subject matter seem to be what you're looking for? Do you see more and more people, things to see around you? Do you see more and more people, things to see around you? Do you see more and more people, things to see around you? Do you see more and more people, things to see around you?

Landscape in context Understanding the context in which photos or other historical material were created is critical to understanding why they are so important. Often we are unaware of what information about the photo that has been our attention. Several to several items are listed below that you should know about the context in which the photo was taken and how it was used.

Why were the photos taken? Photos are inherently biased in the sense that they include some things and leave others out. This gives us an incomplete record of the landscape. Early photographers who took photos of the landscape were often interested in a particular scene. Sometimes you'll notice that this is looking through several photos of that location. For example, as you view more and more photographs of a landscape, you begin to see a particular scene that is being repeated. This is because the photographer was interested in a particular scene. This is because the photographer was interested in a particular scene. This is because the photographer was interested in a particular scene.

