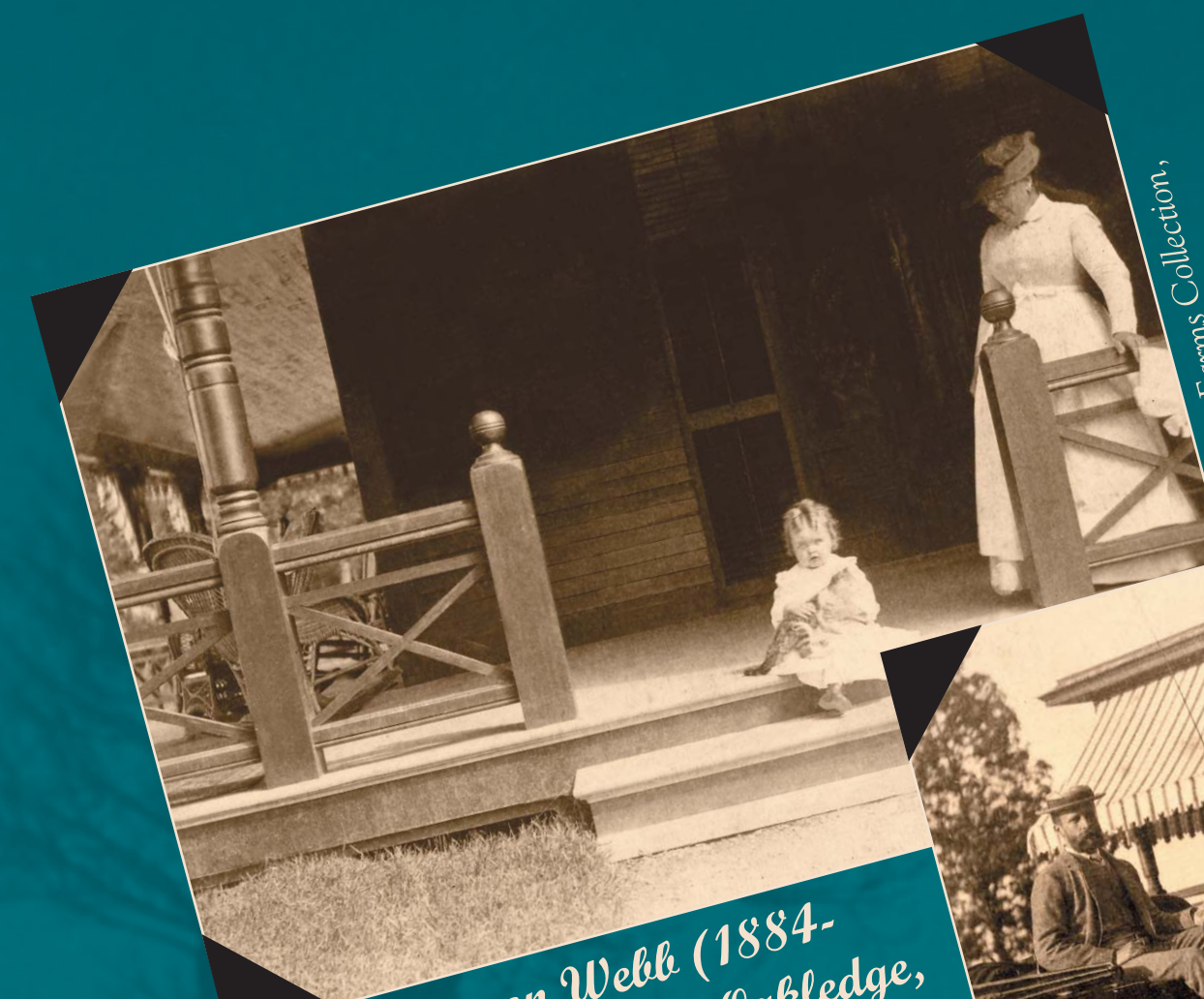


More than Meets the Eye



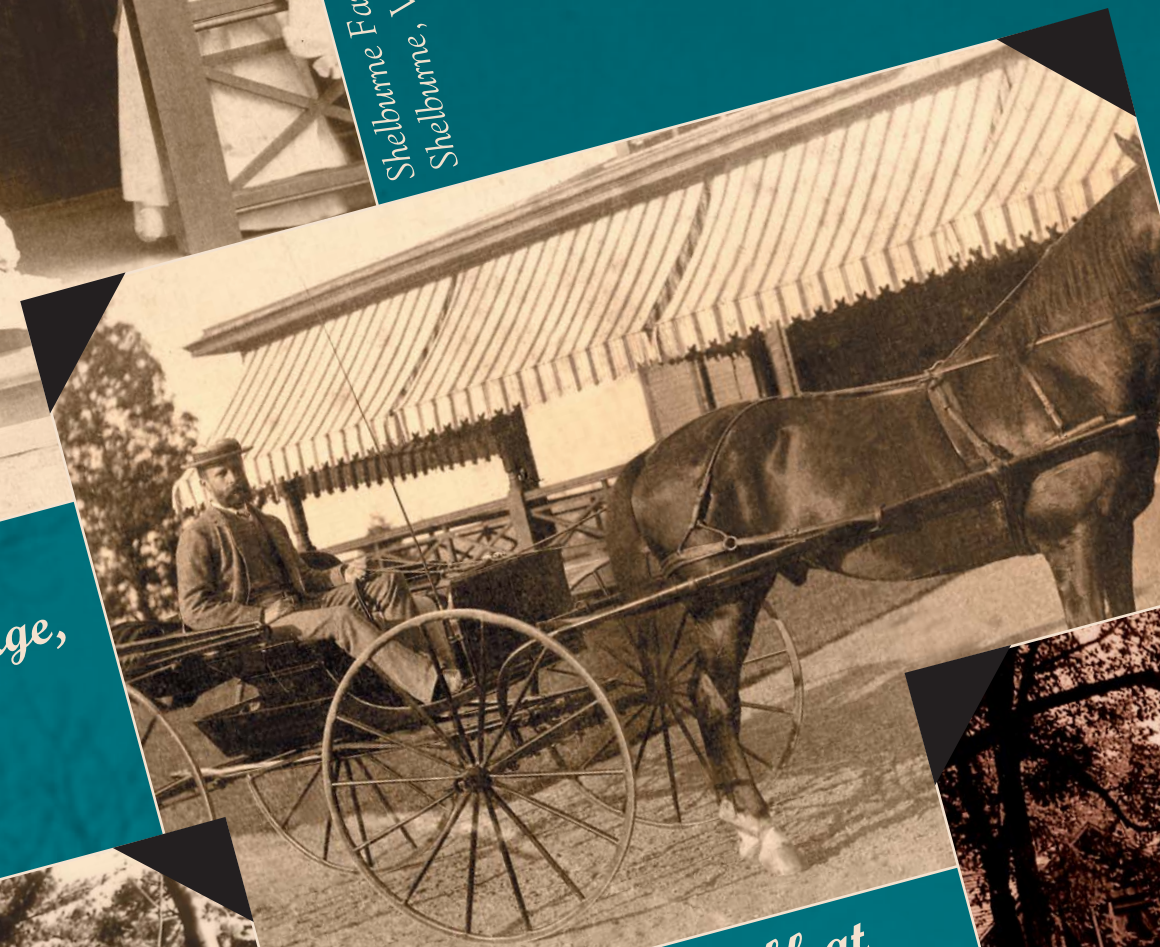
This sign and others in Oakledge Park evolved from research done by students and staff of the 2003 Science and Technology strand of the Governor's Institutes of Vermont, a week-long residential program for highly motivated Vermont High School students. Image collection and analysis supported by the UVM Geology Department's Landscape Change Program, an NSF and Lintilhac Foundation supported initiative to archive images of Vermont landscapes (www.uvm.edu/perkins/landscape). Creation and installation of the signs supported by private donations and grants from the Lintilhac and Henderson Foundations.

Think Oakledge is just another nice park by the water? Take a closer look! There's so much history under your feet and in front of your eyes. From a simple farm to an elegant estate, from a vacation resort to a private country club, there's much to discover about the way people once used this land. Explore the history of Oakledge for yourself by reading this and other interpretive signs around the park. To see hundreds of images of Oakledge as it was, log on to www.uvm.edu/oakledge.



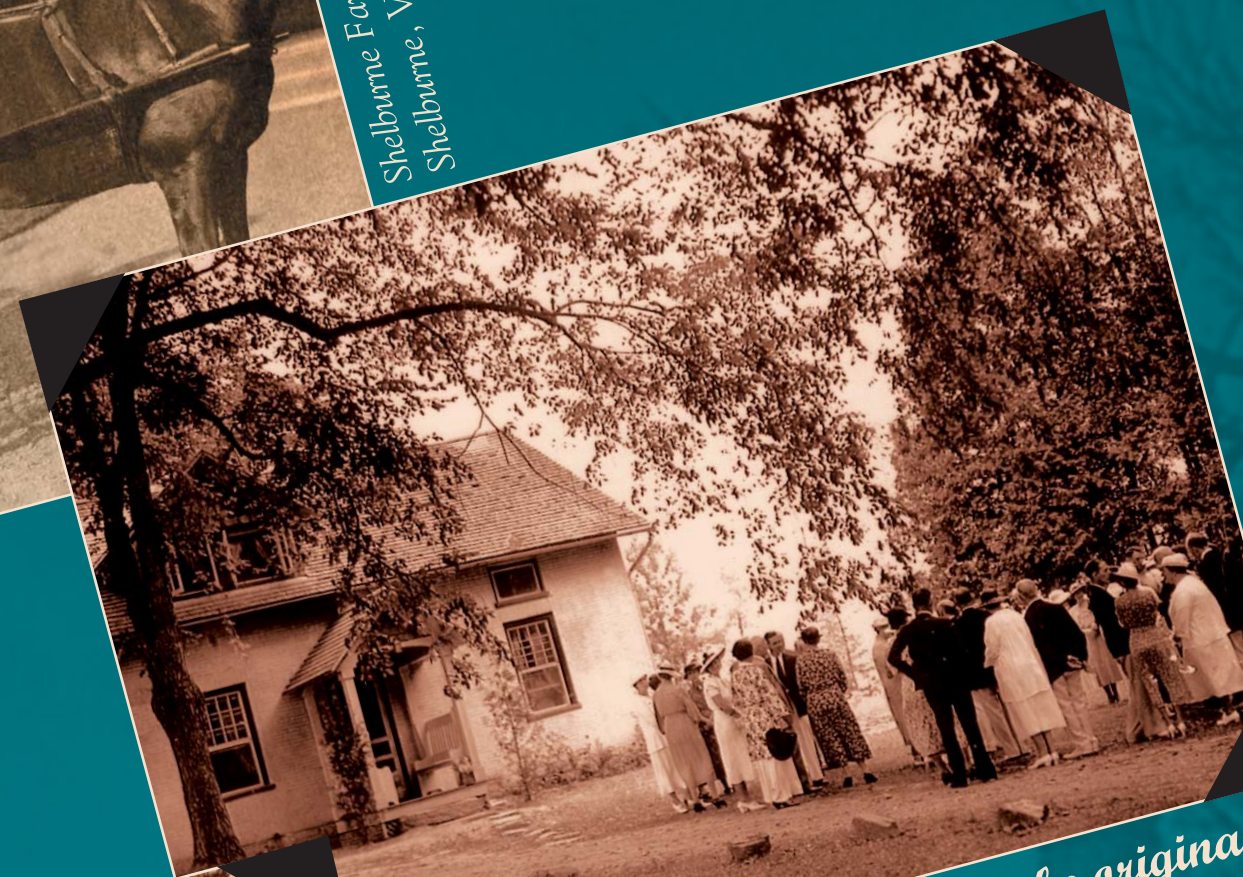
James Watson Webb (1884-1960) on the porch at Oakledge, summer, 1885.

Shelburne Farms Collection, Shelburne, VT



William Seward Webb at the house, 1885.

Shelburne Farms Collection, Shelburne, VT



A wedding at the gatehouse, the original farm house at Oakledge. It predated the Webb estate.

Faith Emerson



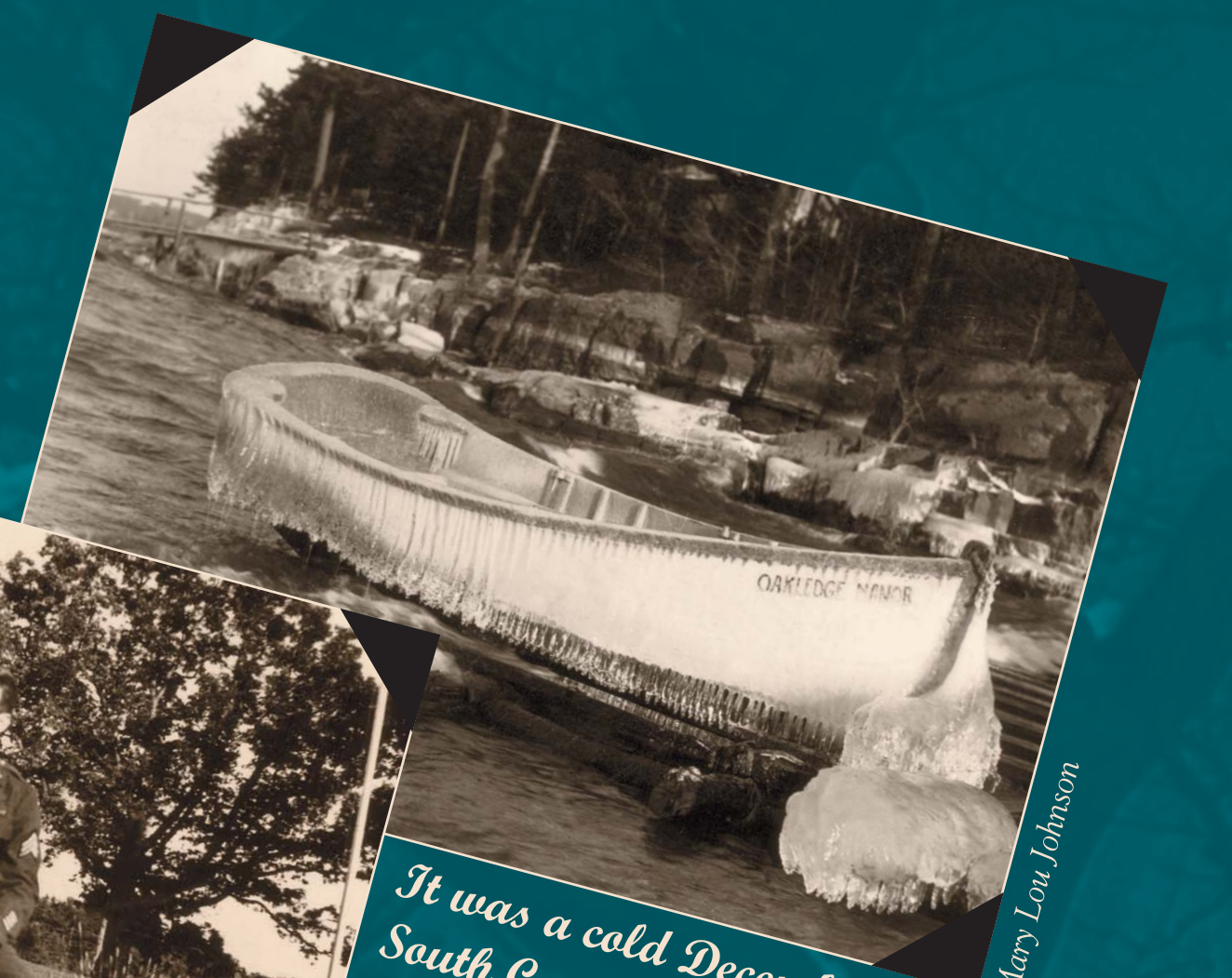
Fred Hill, manager of Oakledge Manor, sailing on Lake Champlain.

Carobyn Hoelgdon



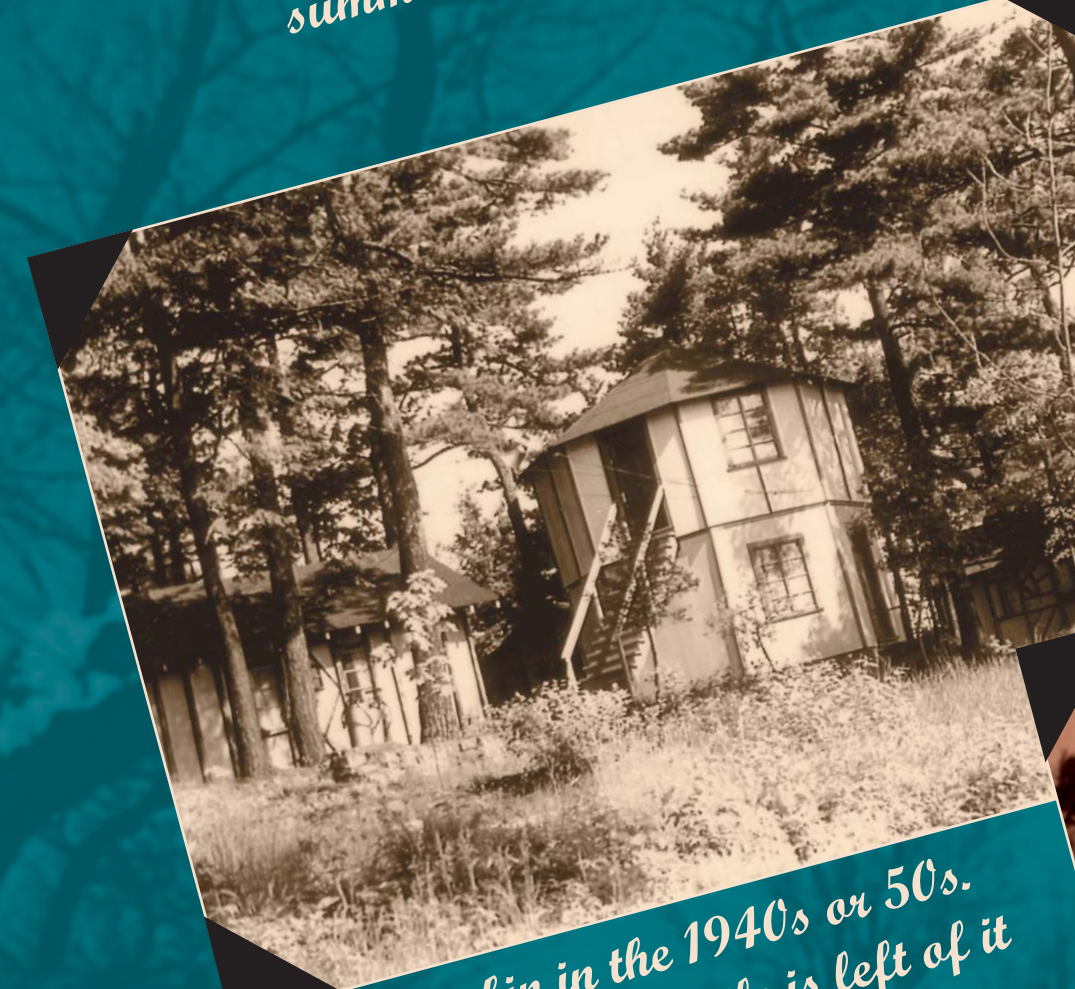
A July 1945 honeymoon at Oakledge. "We stayed in the gatehouse but ate in the manor."

Mary Lou Johnson

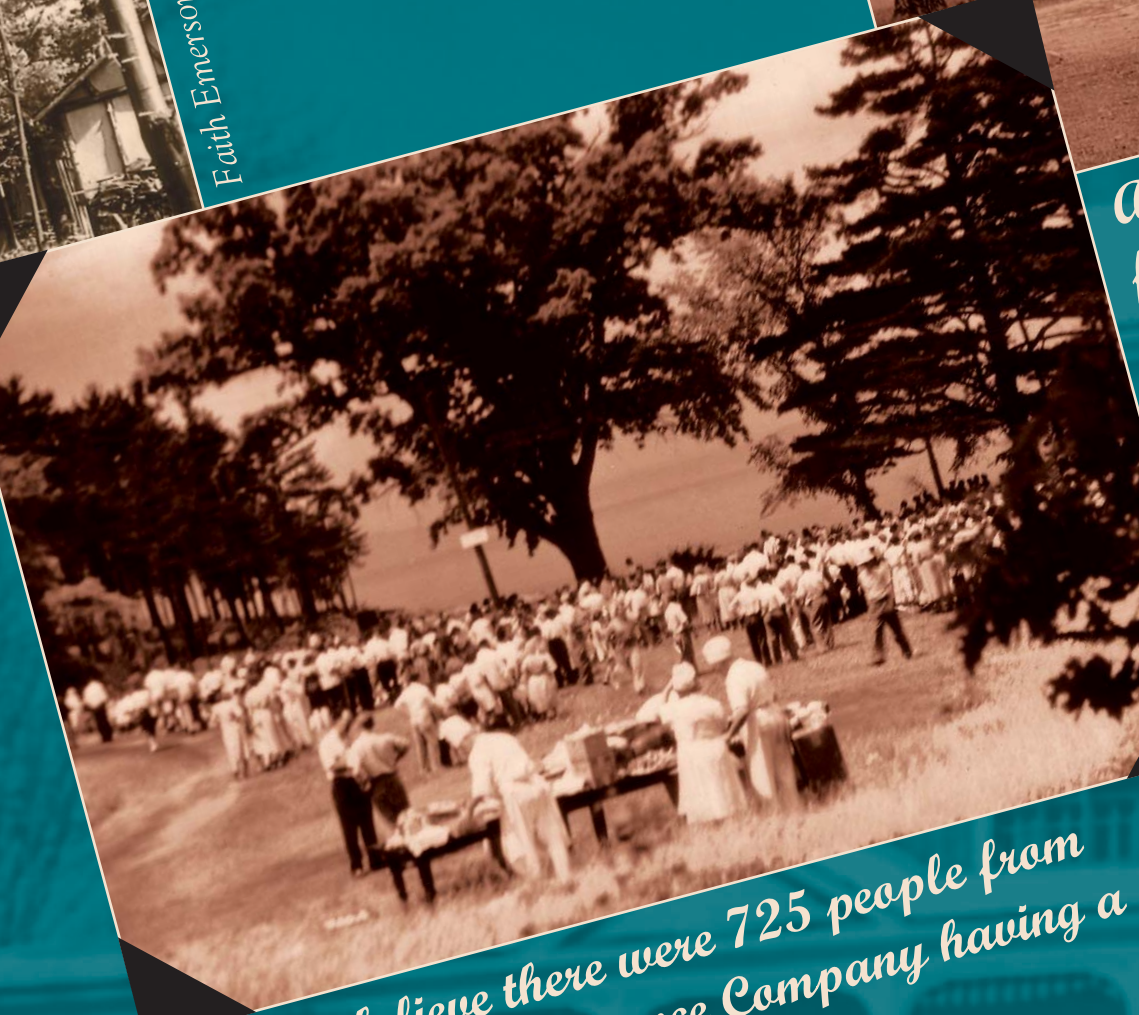


It was a cold December in South Cove, 1937.

Mary Lou Johnson



Octagon cabin in the 1940s or 50s. Can you find what little is left of it today?



Can you believe there were 725 people from National Life Insurance Company having a buffet lunch at Oakledge?

Carobyn Hoelgdon



The Gatehouse at Oakledge Manor.

Carobyn Hoelgdon



The Polk bungalow was a great place to stay in the fall, 1942.

Mary Lou Johnson

In the background is the main house at Oakledge, December 1936. Courtesy of Faith Emerson.

1793
Abram Brinsmaid lived here. A silversmith and jeweler on Church Street, he was the first owner of Oakledge, known then as lots 160 and 161.

1850
Napoleon Proctor, a steamboat captain, started a shipyard at South Cove, now the swimming beach.

1883
William Seward Webb purchased 245 acres, built his home, and rebuilt the barns of Oakledge Farm.

1926
Oakledge was sold to a group of Burlington businessmen for development.

1929
Allen Beach opened the Oakledge Manor Resort here. Eventually, there were 20 rooms in the manor, 14 cottages in the woods, and nine more rooms in the gatehouse.

1934
Fred and Edith Hill bought Oakledge and ran the resort until 1953 when David Beach, Allen's son, took over.

1961
Oakledge was sold to a group of General Electric employees from the Burlington plant and became the Cliffside Country Club.

1971
The City of Burlington, threatening to use powers of eminent domain, purchased Oakledge for a park rather than have the property developed for housing.