



THE EVOLUTION OF MAIN STREET, BURLINGTON VERMONT

By Khurram Malghani

1830-1890: A HUMBLE BEGINNING



- Main Street Burlington now the busiest street in the city was once just a path. These two images taken at the UVM campus illustrate its humble beginnings. The path is between the photographer and the fence. Old Mills building can be seen in the background. In the picture below in front of Pomeroy Hall there is a well used path, running horizontally across the picture. Main Street currently occupies the same tract of land.

- LS02843_000 (top, 1863-1874)
- LS02850_000(bottom, 1830-1890)



1870-1877: TOWN CENTRE



- By the time the path (that we now call Main Street) reached the town centre it widened to a street. The two pictures show the intersection of St. Paul Street and Main Street (top). And the City Clerks Office on Church Street and Main Street (bottom).

- LS10353_000(top) Corner of Main and St. Paul Street
- LS02869_000(bottom) Corner of Main and Church Street



1885-1902: UTILITY POLES



- In these pictures taken between 1885 and 1902 utility poles are first sighted. The street has stone curbs and an accompanying paved sidewalk(top). Near the waterfront the street lacked any curb.



- LS10335_000(top) Main Street with Utility Poles on the left side.
- LS10346_000(middle) Corner of St. Paul and Main Street.
- LS00072_000 Corner of Main Street and North Avenue.



1907-1920: SIGNS OF DEVELOPMENT



- During the early 1900s, signs of sizable development appear as the path is widened to make way for the street through the University campus. Where the farmers have brought their full carts of melons to sell.
- The Main street in downtown Burlington during the period also not only had utilities illustrated by the poles but it also had a Trolley Bus Service.



- LS10177_000(top) Wagons in front of Morrill Hall.
- LS11602_000(bottom) Intersection of Main and Church Street.



1920-1940: A PATH BECOMES A ROAD



- The arrival of the cars forced the construction of paved roads. There are a handful of cars depicted on a post card illustrating Hotel Vermont at the corner of St. Paul Street and Main Street (top right). To accommodate vehicular traffic, Main Street was paved by 1934 (bottom).



- LS11601_000 (top left) Vermont Hotel
- LS00841_000 (top right) Paving Main Street
- LS00936_000 (bottom left) Main Street after the paving looking east.
- LS00031_000 (bottom right) Main Street after the paving looking west.

1927 – 1951: AS THE ROAD DEVELOPED SO DID UVM



- Development at UVM also kept pace with the advancements at the Main Street. Three major buildings; Waterman, Southwick and Fleming museum were added to the campus soon after Main Street was paved.

- LS09938_000 UVM Aerial view – 1927 (top)
- LS10067_000 UVM Aerial view – 1951-1957(bottom)



1945 – 1959: POST WWII DEVELOPMENTS



- After the Second World War Main Street east of the University campus saw tremendous growth, fueled by the demand for new residential, commercial and services areas. Away from the crowded downtown Burlington.
- LS06585_000 Aerial View. Looking west towards the lake Main Street cuts diagonally across the image.



1959-1960: ARRIVAL OF THE INTERSTATE



- Burlington became connected to the interstate highway system via the Main Street at Exit 14. This gave rise to further development in the area.



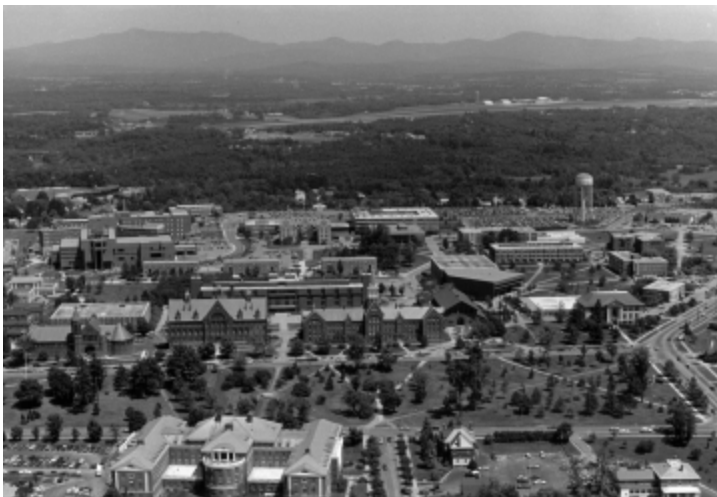
- LS09978_000 (top) Aerial View of Main Street crisscrossing the picture from bottom right.
- LS10411_000(bottom)Exit 14 – Junction of Main Street and I-89.



1970-1990: MAIN STREET FEEDS UVM GROWTH



- A well connected Main Street to the Interstates gives UVM and Fletcher Allen Hospital easier access to greater population in the neighboring regions. Fueling their growth as illustrated by the clustering of new buildings at UVM campus.



- LS09937_000(top) Burlington water reservoir and UVM's south campus.
- LS10069_000(bottom) Aerial view of UVM campus with the airport and the Green Mountains in the background



CONTEMPORARY MAIN STREET.



- Main Street has come a long way since its early beginnings. It has seen a tremendous growth east of the UVM campus as illustrated by the top and the middle picture. On the other hand the change from UVM to downtown has not been as drastic as witnessed to the east of UVM over the last couple of decades.
- LS00031_001(top) Main Street opposite the UVM Rugby field.
- LS06585_001(middle) Aerial view of Exit 14 on I-89. Staples Plaza is on the left of Main Street, Sheraton hotel is to the right, UVM south campus, Burlington and the Lake in the background.
- LS09978_001(bottom) Aerial view or Burlington. Main Street run vertically from the bottom right to the UVM campus.



References

- Vermont Historic Society <http://www.vermonthistory.org>
- Historic Burlington Project <http://www.uvm.edu/%7Ehp206/>
- Landscape Change Program <http://www.uvm.edu/landscape/menu.php>
- City of Burlington <http://www.ci.burlington.vt.us/>
- City of Burlington: Transportation System Plan: http://www.ci.burlington.vt.us/planning/mdp/2006/mdp_2006_transportation.pdf

