

MONTPELIER: CAPITOL VILLAGE



THE STATE HOUSE (1925 ABOUT)
LS00836_000



THE STATE HOUSE (7 / 10 / 2000)
LS00342_001

**A PHOTOGRAPHIC HISTORY OF MAJOR EVENTS
FOR THE STATEHOUSE, MONTPELIER, AND
VERMONT**

**THE STATE OF VERMONT HAS GROWN CONSIDERABLY
FROM THE LATE 1700'S TO TODAY, AND NO TOWN
BETTER EXEMPLIFIES THIS CHANGE THAN ITS
CAPITOL CITY, MONTPELIER...**



AERIAL VIEW OF STATE CAPITOL (1955 EXACTLY)

LS04075_000

MONTPELIER BECAME THE CAPITOL OF VERMONT IN 1805

THE FIRST
CAPITOL
BUILDING WAS
BUILT IN 1808

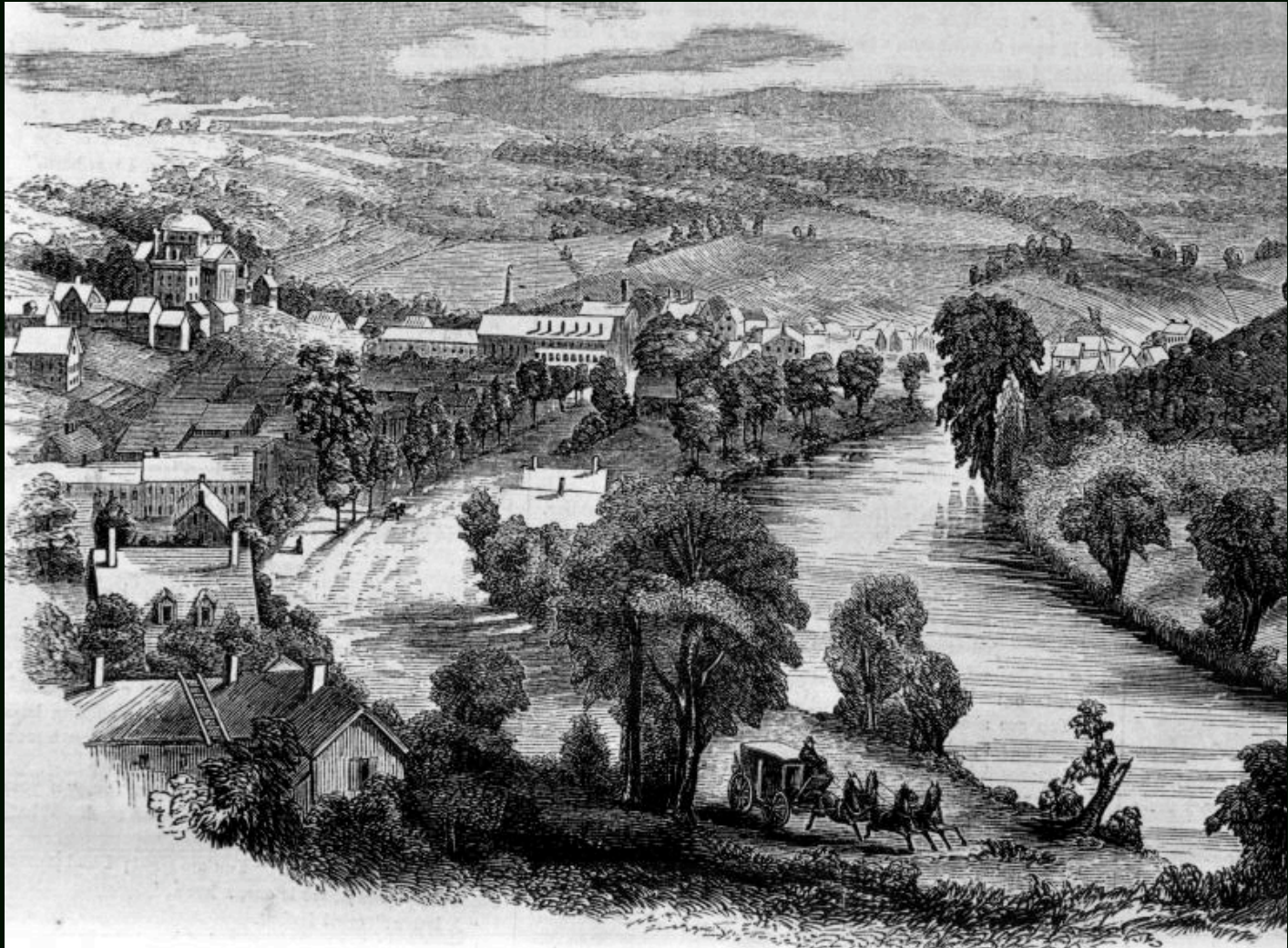


FIRST KNOWN IMAGE OF MONTPELIER (1821 ABOUT)

LS06266_000

EVEN THOUGH IT WAS THE STATE CAPITOL, MONTPELIER WAS STILL MOSTLY RURAL IN THE EARLY 1800'S.

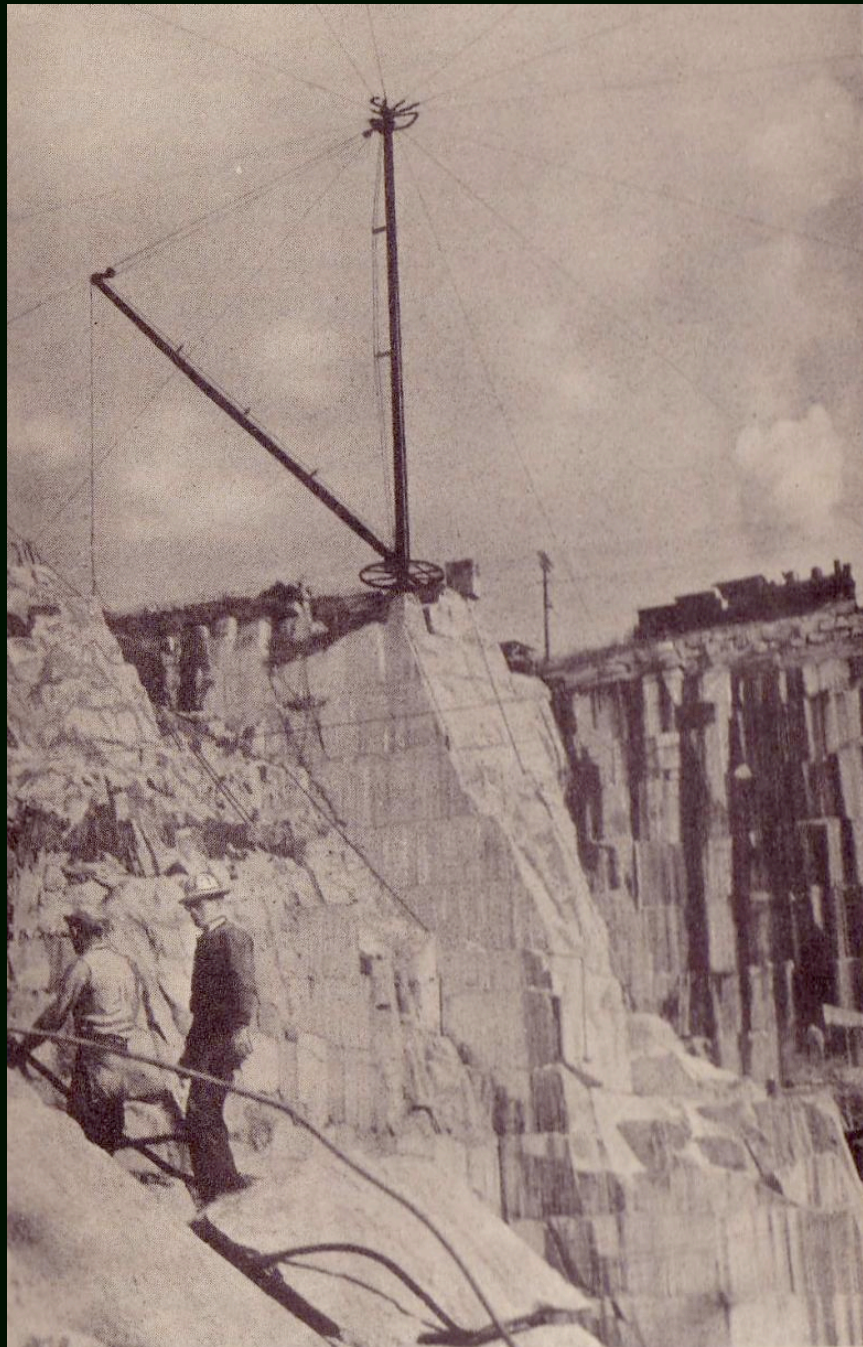
THE SECOND
CAPITOL WAS
BUILT IN 1838



VIEW OF MONTPELIER, LOOKING EAST (1857 ABOUT)

LS06227_000

**GRANITE WAS
DRAWN 10
MILES FROM
THE
NEIGHBORING
TOWN OF
BARRE BY OX
CART TO BE
USED IN THE
CONSTRUCTION
OF THE NEW
BUILDING.**



**DERRICKS AT
ROCK OF AGES
QUARRY (NO
DATE)**

LS00552_000

**THE STATEHOUSE THAT WE HAVE TODAY WAS
BUILT IN 1859 AFTER A FIRE DESTROYED
MOST OF THE PREVIOUS ONE**



**THE STATEHOUSE IN MONTPELIER IS SURROUNDED BY
PHYSICAL SOUVENIRS OF VERMONT'S PAST...**

THE STATEHOUSE HAS UNDERGONE MANY INCARNATIONS



1803



1838



1857



1908



1940



2002

ON TOP OF THE CAPITOL DOME IS CERES, THE ROMAN GODDESS OF AGRICULTURE.



THE ORIGINAL STATEHOUSE DOME WAS SHEATHED IN COPPER AND PAINTED RED, NOT COVERED IN 24-CARAT GOLD-LEAF LIKE IT IS TODAY

ETHAN ALLEN'S BROTHER, IRA ALLEN WROTE OF VERMONT'S INHABITANTS: "THEY ARE ALL FARMERS..."



ON THE FRONT PORTICO STANDS A STATUE OF ETHAN ALLEN LEADER OF THE GREEN MOUNTAIN BOYS

AGRICULTURE HAS ALWAYS BEEN ONE OF THE MAJOR SOURCES OF LIVELIHOOD FOR VERMONT



MONTPELIER FARM WITH OPEN FIELDS (1949 EXACTLY)

LS07015_000

IN THE EARLY 1900'S, EXTENSIVE LOGGING HAD REDUCED THE TOTAL WOODLAND AREA TO 25%

NOTE THE LACK OF
TREES BEHIND THE
STATEHOUSE

IN FRENCH, THE WORD
"MONTPELIER", CAN
BE TRANSLATED AS
"BARE HILL"



BARE HILL BEHIND THE STATEHOUSE (1900 BEFORE)

LS04027_000



**LUCKILY THE STATE
HAS RECOVERED ITS
FORESTS**

**POSTCARD VIEW LOOKING INTO
VILLAGE FROM SOUTHWEST (1906
(MAILED))
LS00152_000**



**VIEW LOOKING INTO VILLAGE FROM SOUTHWEST (8/23/2000)
LS00152_001**

MANY TOWNS WERE DEVASTATED BY THE FLOOD OF 1927...



RICHFORD, VT.
NOV.4th. 1927.

MAIN STREET DURING THE FLOOD OF 1927 (Nov. 4)
LS00172_000

BUT MONTPELIER WAS ONE OF THOSE MOST AFFECTED...



MAIN STREET FLOODED IN 1927 (1927 (Nov. 3-4)
LS00603_000

**DUE TO ITS GEOGRAPHIC LOCATION BETWEEN
STEEP VALLEYS, MONTPELIER WAS
ESPECIALLY PRONE TO FLOODING...**



**FLOODED COURTHOUSE AND BANK (1869-10-04 EXACTLY)
LS03906_000**



**FLOODED DOWNTOWN (1869-10 EXACTLY)
LS03922_000**

**IN THE AFTERMATH, THE CITY WAS COST
OVER 3,200,000 DOLLARS IN DAMAGES, BUT
ONLY ONE LIFE WAS LOST.**



**STATE STREET AFTER FLOOD (1927)
LS01133_000**

EVEN TODAY, THE CITY IS PRONE TO NATURAL DISASTER, AND IS IN CONSTANT DANGER



MAIN ST. DURING THE FLOOD OF 1992



ARIAL VIEW OF 1992 FLOOD

BUT THROUGH ALL DISASTER THE CAPITOL AND THE CITY HAS PERSEVERED, THE CITY HAS GROWN WITH THE STATE, AND THE STATE WITH THE CITY



MAIN STREET (BEFORE 1900)

LS05638_000

MAIN STREET (AFTER 1940)

THE STATEHOUSE ACTS AS THE ULTIMATE REMINDER OF VERMONT'S HISTORY AND POSITION, A GRAND GOLDEN BEACON, RISING IN GRANITE FROM GREEN HILLS, SURVIVING FLOOD AND FIRE, TO SERVE AS THE HOME OF REPRESENTATIVES FROM THE ENTIRE STATE



**“THEY HEWED THIS STATE OUT OF THE WILDERNESS, THEY HELD IT AGAINST FOREIGN FOE, THEY LAID DEEP AND STABLE THE FOUNDATION OF OUR STATE LIFE, BECAUSE THEY SOUGHT NOT THE LIFE OF EASE, BUT THE LIFE OF EFFORT FOR A WORTHY END.”
-THEODORE ROOSEVELT (WORDS WRITTEN ON PLAQUE IN STATEHOUSE FRONT HALL)**