

# A Nautical View of Vermont

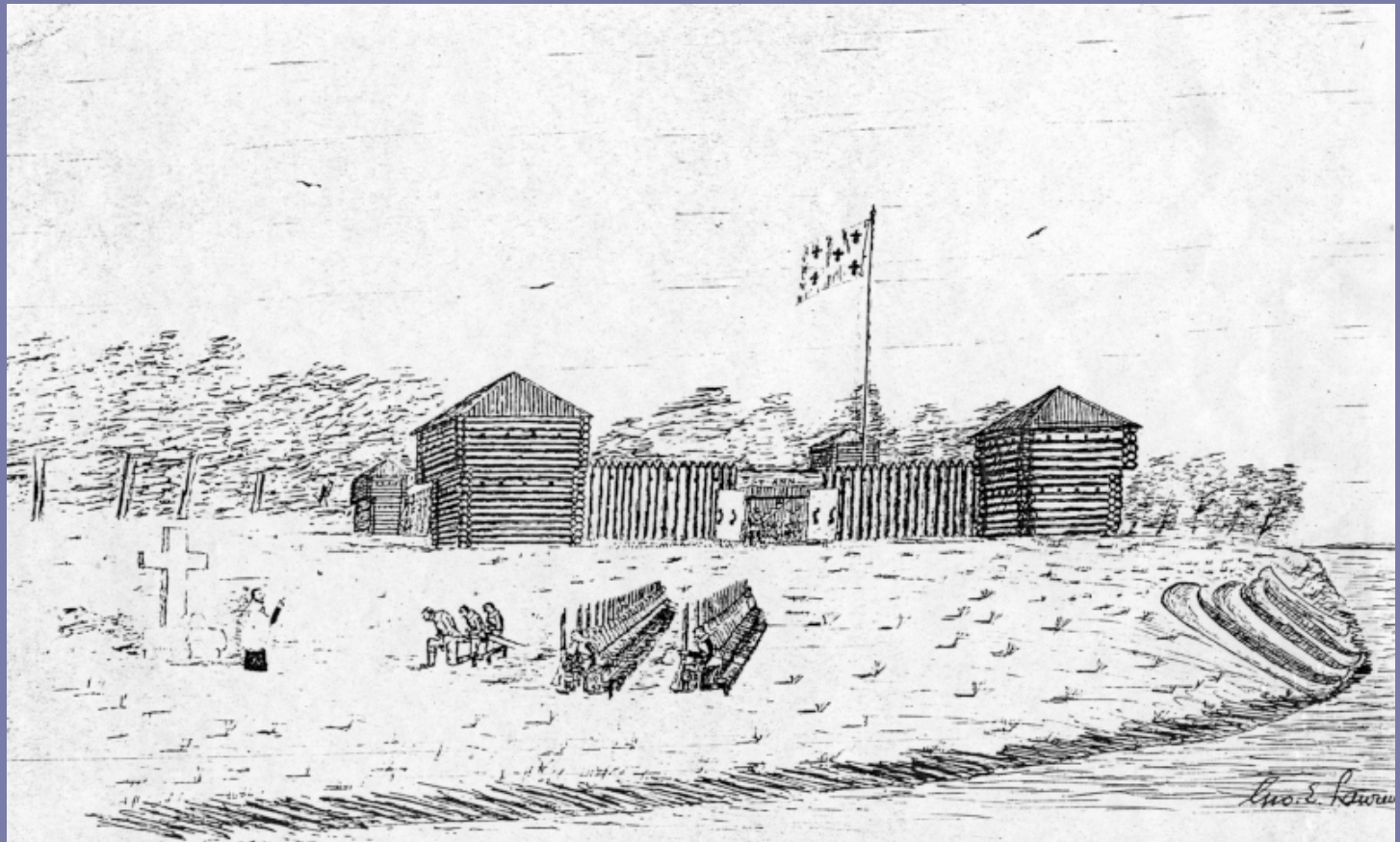


LS07055

Christy Leonard

The importance of boating in the Champlain Valley grew during French and British military conflicts over waterways. Vermont waterways were important because they provided access to the rugged interior land of New England. This drawing shows Fort St. Ann, Isle LaMotte 1690. The fort sits along the shore of Lake Champlain. Canoes are pulled onto the shore in the right hand side.

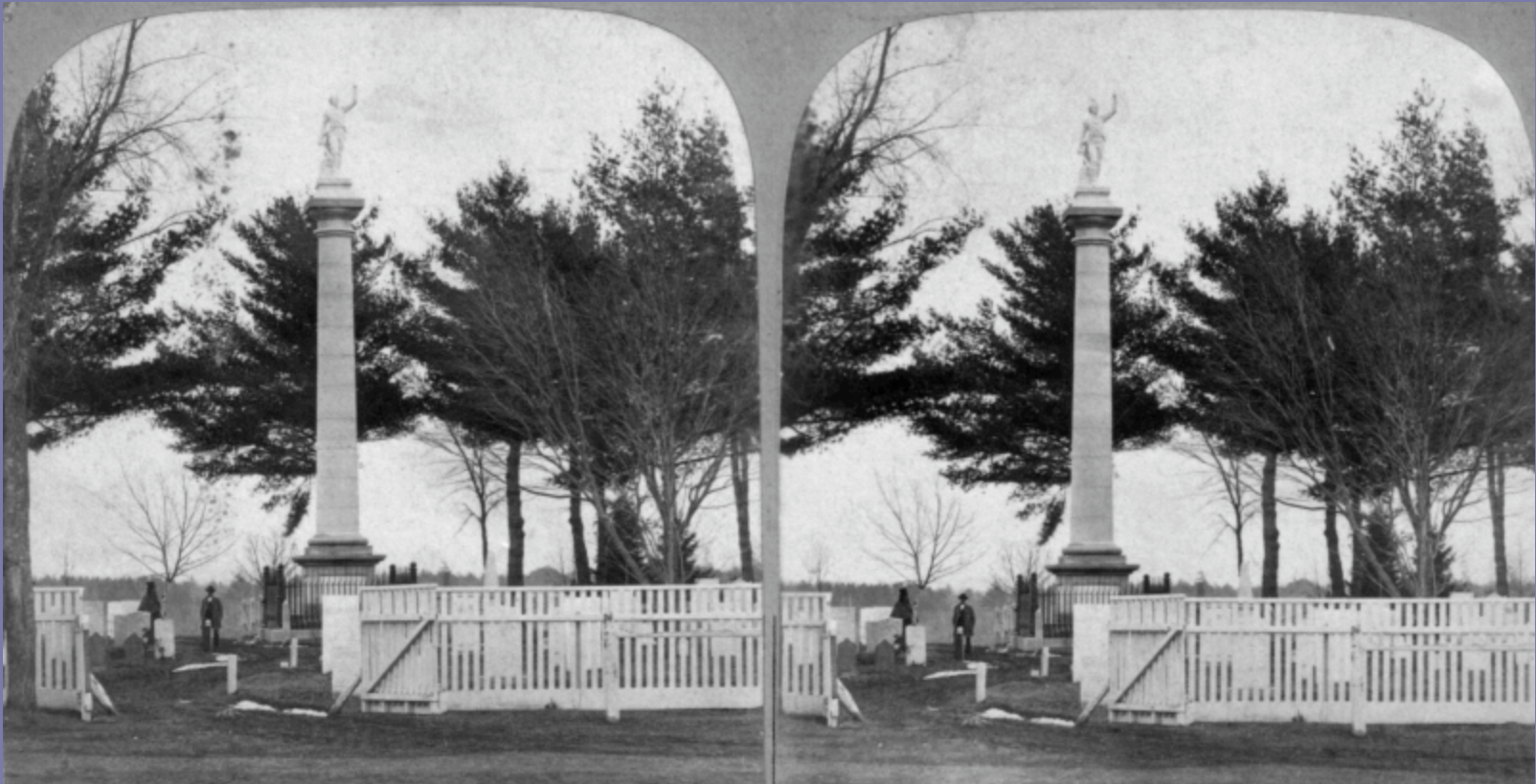
LS01577



FORT ST ANN - ISLE LA MOTTE - 1690.

IN 1690, THE GOVERNOR OF NEW FRANCE ORDERED CAPTAIN DE LA MOTTE TO PROCEED TO LAKE CHAMPLAIN AND BUILD A FORT THAT WOULD BE A GUARD AGAINST THE RAIDS OF THE SAVAGE IROQUOIS AND ACT AS A CHECK TO ANY ENCROACHMENTS OF THE ENGLISH WHO HAD RECENTLY TAKEN NEW AMSTERDAM FROM THE DUTCH AND CALLED IT NEW YORK. CAPT. LA MOTTE CHOSE A SPOT ON THE NORTH END OF THE ISLAND WHICH HAS EVER SINCE BORNE HIS NAME. THE SKETCH SHOWS CAPT. LA MOTTE, CAPT. CHAZY, ANOTHER OFFICER AND THE GARRISON RECEIVING THE PRIEST'S BLESSING AT THE FIRST MASS EVER SUNG IN WHAT ARE NOW KNOWN AS THE NEW ENGLAND STATES, WHICH HAS MADE THIS PLACE A CATHOLIC SHRINE. WITH THE BUILDING OF Ft. FREDERIC IN 1732 THIS FORT LOST ITS IMPORTANCE AND FELL INTO RUINS.

Conflict again was brought to Vermont's waterways with the Revolutionary war. With the end of the war, the British lost control of Lake Champlain, and the Americans eagerly took advantage of the newly gained waterways to develop new trade routes. Remnants of the Revolutionary war are still seen in Vermont. The stereoview below shows Ethan Allen Monument at Green Mount Cemetery taken between 1873 and 1890. LS02887





Vermont was settled and commercialized from 1783 to 1812. During this time, a manufacturing industry developed to harvest and mill the newly accessible virgin timber. The timber was then transported along Vermont waterways by sailboats. The image above is an illustration of Burlington Bay in 1811. The illustration shows three men observing and six sailboats sailing the lake. LS01382



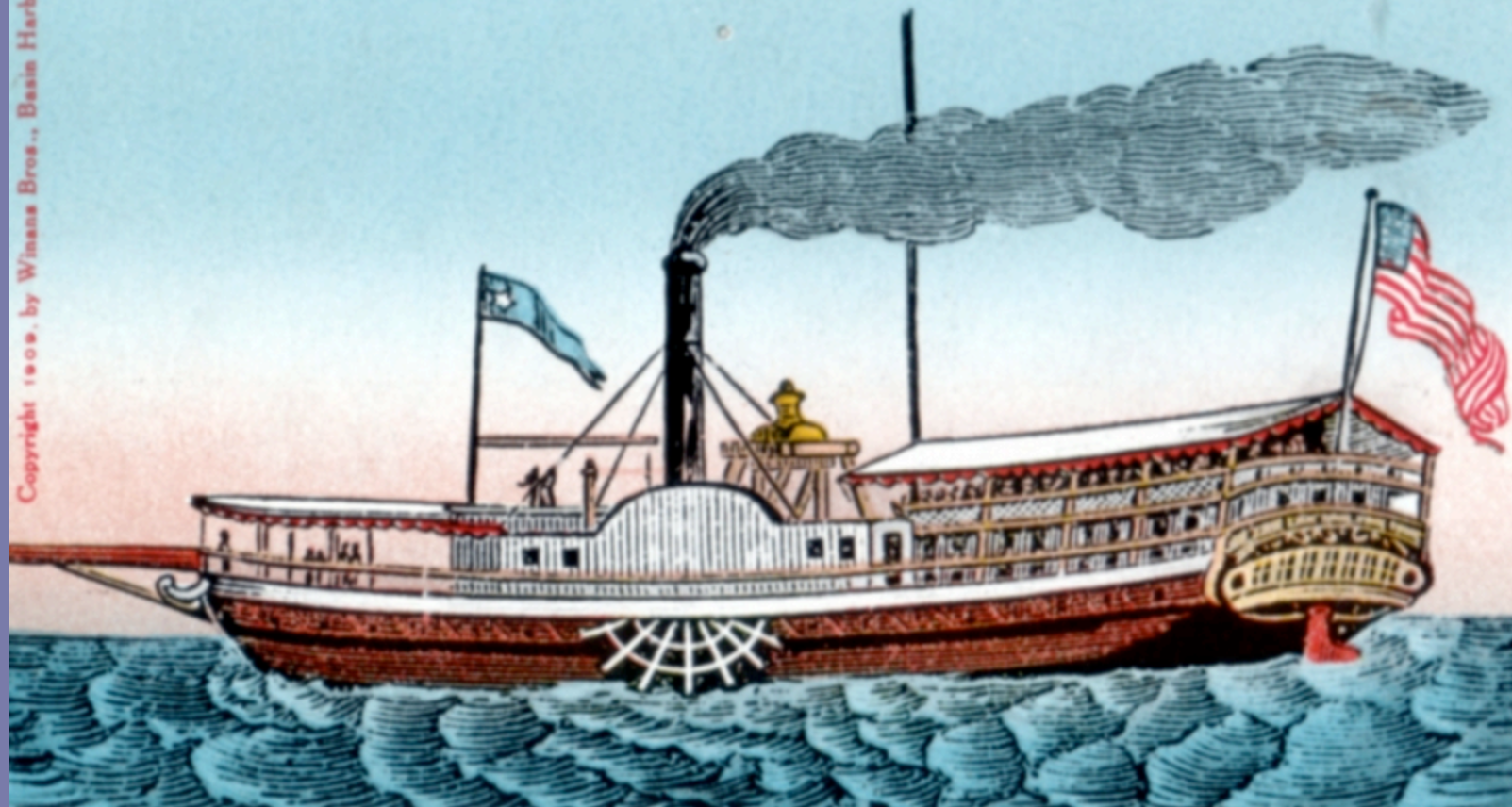
The construction of the Champlain Canal connected the Hudson and Champlain Valleys, allowing natural resources from northern New England to profit American industry. Cargo was transported from conventional canal boat to sailing crafts at the end of each canal. The photo above was taken July 1941 and shows a canal lock on the old Champlain Canal in Saratoga, NY. ([www.co.saratoga.ny.us.html](http://www.co.saratoga.ny.us.html))



The opening of the Champlain Canal allowed extractable industries such as, stone quarrying, timber cutting, and iron mining to boom. The image above was taken in Lowell, VT between 1860 to 1900. It displays a saw mill which was used to cut the newly harvested timber. The picture shows numerous buildings and sheds along with horses. This photo also displays clear cutting, which took place as the timber industry boomed. LS04496

FIRST L.C. Steamboat 1808

Copyright 1909. by Winans Bros., Basin Harbor, Vt.

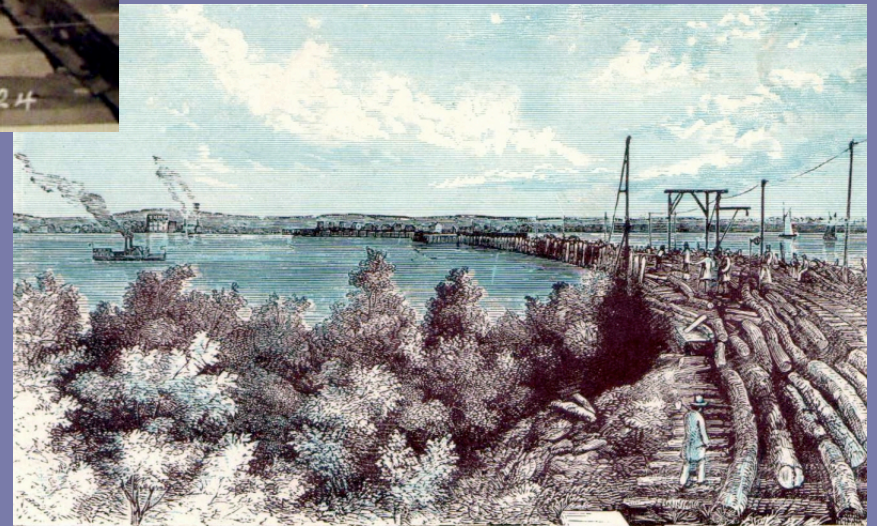


Opening of the Champlain Canal brought steam navigation to Vermont. The image above displays a post card which depicts the first steamboat on Lake Champlain, and the second steamboat in the world. It was built and launched in Burlington, VT in 1808. LS11311



The development of the rail system caused the decline and termination of canal use. This photo shows a steamer being moved to a museum because it was no longer needed for commercial use.

The picture to the left depicts a railroad crossing Lake Champlain. It was new investments like this that caused the termination of canal use, and therefore decline of commercial boating. LS02300



R. R. BRIDGE, AT ROUSE'S POINT.



This image shows the construction of the Champlain Bridge in Addison, VT 1929. LS06711



Passenger steamers declined with the construction of bridges which crossed the lake and introduction of the automobile to the region. The photo above also displays the construction of the Champlain Bridge in Addison, VT 1929. LS06713



Boating in Lake Champlain Colchester, VT 1967. LS05565

From 1945 to present day waterways of Vermont have primarily been used recreationally. The increase in recreational boats caused an increase in public beaches and beach goers. A concern over the lake's water quality and health also increased with increasing recreational use.



Cedar Beach on Lake Champlain, 2007. LS00722

Boating in Vermont has had a large impact on both the landscape and waterways of the state. Vermont was only able to extract its natural resources because there was a method to transport them, via boating. Boating is now a large attraction for tourist to the state, helping to support the local economy.



Image was taken in 1964 and shows people boating on Lake Champlain at DAR state park. LS09100

# Work Cited

Champlain Bridge. 23 Dec.2007. Wikipeda. 7 Jan. 2008<[<http://en.wikipedia.org/wiki/champlain\\_bridge\\_\(unitedstates\)>](http://en.wikipedia.org/wiki/champlain_bridge_(unitedstates))>

Champlain Canal History. 8. Jan. 2008 <<http://www.champlaincanal.net>>

Friends of the Winooski River. 7 Jan. 2008 <<http://www.winnoskiriver.org>>

Heurtley. Richard. The Secret History of Vermont. 2004. 9 Jan. 2008 <<http://heurtley.com/Richard/tshov.html>>

History: Recreational Period. Lake Champlain Nartime Museum. 7 Jan. 2008< <http://www.lcmm.org>>

Lake Champlain and Lake George Historical Site. 2007. America's Historical Lakes. 9 Jan. 2008 <<http://www.historicallakes.org>>

McGranahan. Ronald. Battle of the American Revolution. 2004. The American Revolution Homepage. 7 Jan. 2008 <<http://www.americanrevwar.homestead.com>>

Paddler's Trail: History and Use. 2003. LCC, 7 Jan. 2008 <<http://www.Lakecahnplaincommitte.org/lake/paddlers.html>>

The Canal Boats and Wrecks of Lake Champlain. 7 Jan. 2008 <<http://ina.tamu.edu/LCcanalboat.htm>>

Transportation History in Vermont. nps. 7 Jan. 2008

<<http://www.nps.gov/nr/travel/centralvermont.html>>

Landscape Change Program.2004. University of Vermont. 10 Jan.2008 <[www.uvm.edu/landscape](http://www.uvm.edu/landscape)>