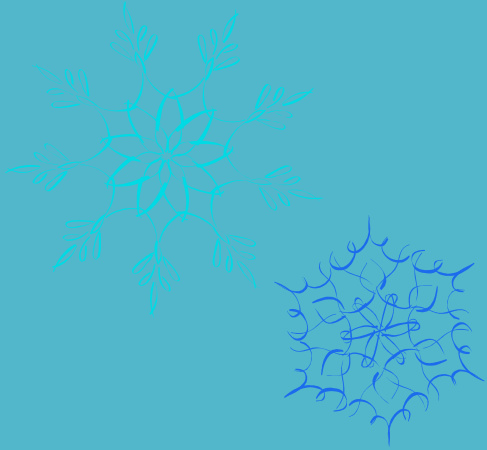
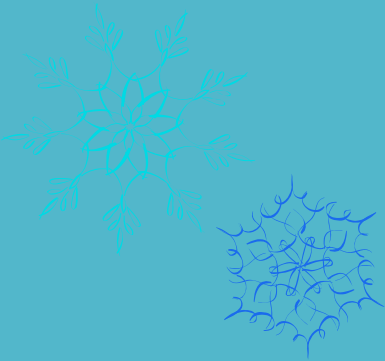


# Snow and the effects it has on Vermonters!



Base Lodge at  
Sugarbush,  
LS10790  
Warren, 1959

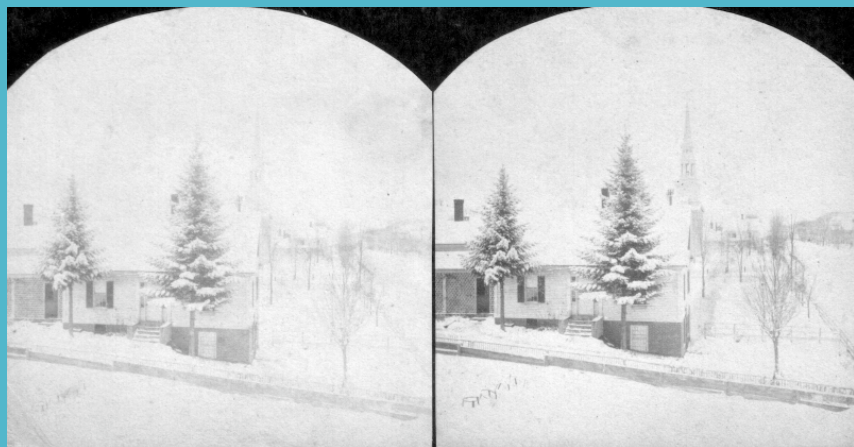
Vermont during those harsh  
months of Winter!



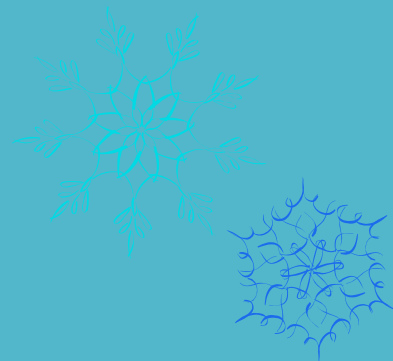
I created this scrapbook in order to show how the snow effects Vermonters, in both good and bad ways!

I displayed images about major storms and also images about recreational activities that people participate in!

It's a very important and interesting topic that pertains to any Vermonter. We all attend the University of Vermont snow is a major part of our lives! Enjoy the slideshow!



A House in Winter  
St. Johnsbury, 1875  
LS04701



# Blizzard of '88



1888 Blizzard, Burlington, LS11583



Brandon, 1888, LS01898

In March of 1888, a terrible storm known as the Blizzard of 1888 hit the entire East Coast. This nor'easter kept people out of work and off the roads for days. Vermonters were accustomed to such harsh weather but there were 15 feet high snow drifts and snow so thick that you couldn't see in front of you!



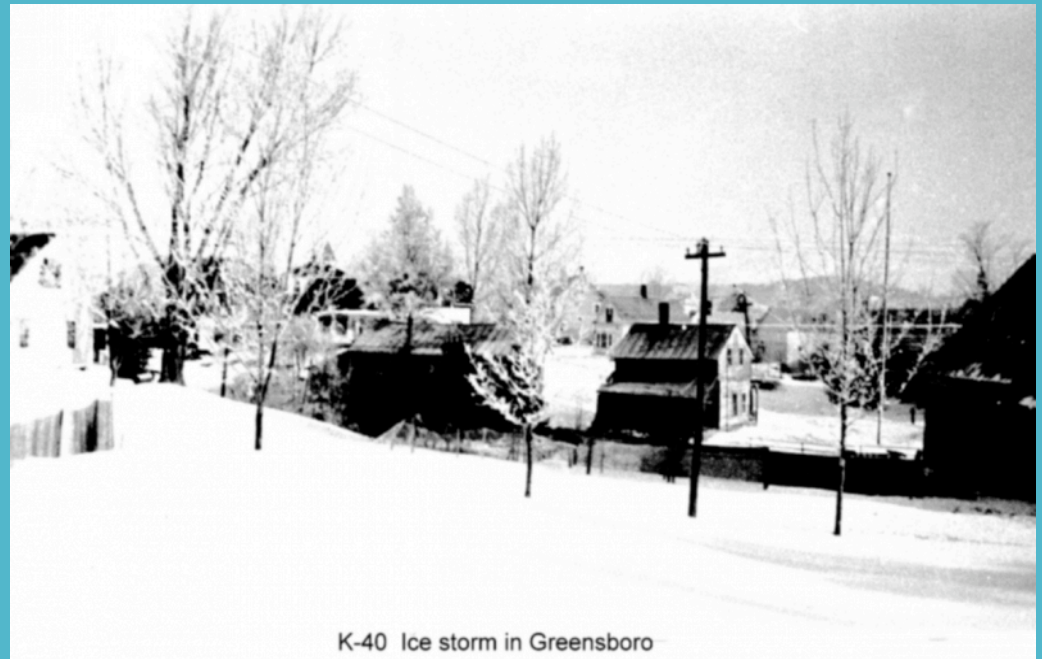
Main Street after blizzard, Brattleboro, 1888, LS01896

**Ice is a major hardship for Vermonters as it creates dangerous driving conditions, which lead to many car accidents.**

**Before cars, people had to worry about damage to their farming equipment, animals and heating their homes.**



Car in Ice Jam, LS09112  
Hardwick, 1964



K-40 Ice storm in Greensboro

Ice Storm, Greensboro, date unknown, LS02741

# Other Big storms

College Green after storm,  
Burlington, LS10360



and the aftermath...



Winter Snowstorm, Burlington,  
1880, LS11585



After a Snowstorm, Bristol, 1930,  
LS08228

“...treacherous for driving, perfect if you happen to be a snowboarder or a skier.”

Collins, [click here](#)



**Car  
Accident  
on the  
Interstate  
89... 1970**

Montpelier,  
LS07875

# Don't just stand there... get out and enjoy the snow!



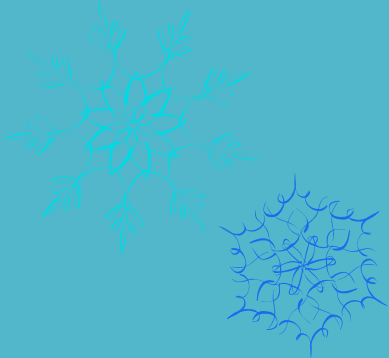
Town unknown, 1955, LS02307

**Collecting sap!**



Town unknown, 1964, LS09107

**Dad with his son, ice fishing!**



# Pick-up ice hockey!



Middlebury, 1960, LS05702

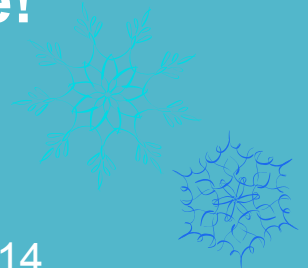


Brookfield, 1982, LS08056



Town and year  
unknown, LS05614

**Boys cutting  
and  
harvesting  
ice!**



# Skiing is a major sport for Vermonters!



**Ski lift on a beautiful ungroomed trail, Stowe**

1958, LS10738

Skiing started as a means for transportation to get down impassible roads in the winter.

Later it became a hobby and grew to be one of the most popular sport in Vermont!



**People on skis, Stowe**

1958,  
LS08914

# The Winter Carnival!

This event dates back to before the Civil War! It is held in January and involves all sorts of winter sports to participate in!



*Anna C. Mower*

Burlington Winter Carnival, LS10242

The first winter carnival was held in 1921 to decrease the winter blah's and increase the excitement of winter! It sure stuck because it still goes on today!

1922, LS06933



**Stowe Winter  
Carnival, ice  
castle!**

**Ski jumper  
at the Stowe  
Winter  
Carnival!**



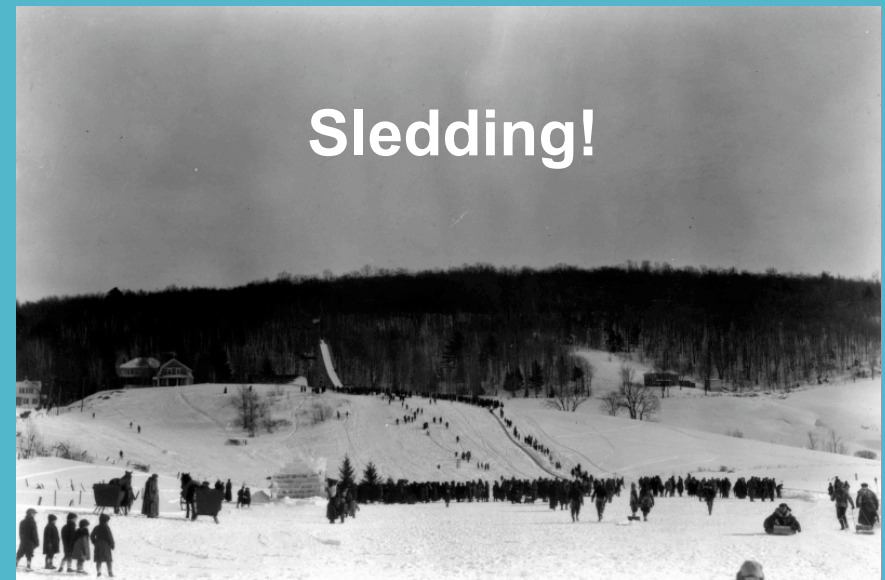
1922, LS06937

At the Winter Carnival you will find, "... breathtaking ice sculptures, live music, great food, costumes, crafts, contests, parades, bonfires, and fireworks and of course there's the crowd. Winter carnivals are among the most anticipated annual events in Vermont, and whole communities come out to celebrate!"

-Vermont Living, [click here](#)

## Ice Acrobat putting on a show!

Stowe, 1922, LS06935



## Sledding!

Stowe, 1922, LS06936

**Thanks to the Landscape Change Program archives, I was able to put together this scrapbook to display how snow effects the lives of Vermonters! Although there may be hardships when a snowstorm hits Vermont, people are able to get outdoors and enjoy themselves with various activities that include all ages!**



Burlington, 1965, LS12016

Child  
playing  
on ice!

