

# The Expansion of UVM

## 1791 - 2007

This scrapbook is an attempt to show the incredible expansion of the University of Vermont. Since its charter in 1791, the University has grown from its earliest years with only a handful of students and a single teacher to its current status as a modern university with upwards of 10,000 students and a full faculty and staff offering degrees in an innumerable number of subjects.

Matthew Meikleham

Geology 196

January 10, 2007

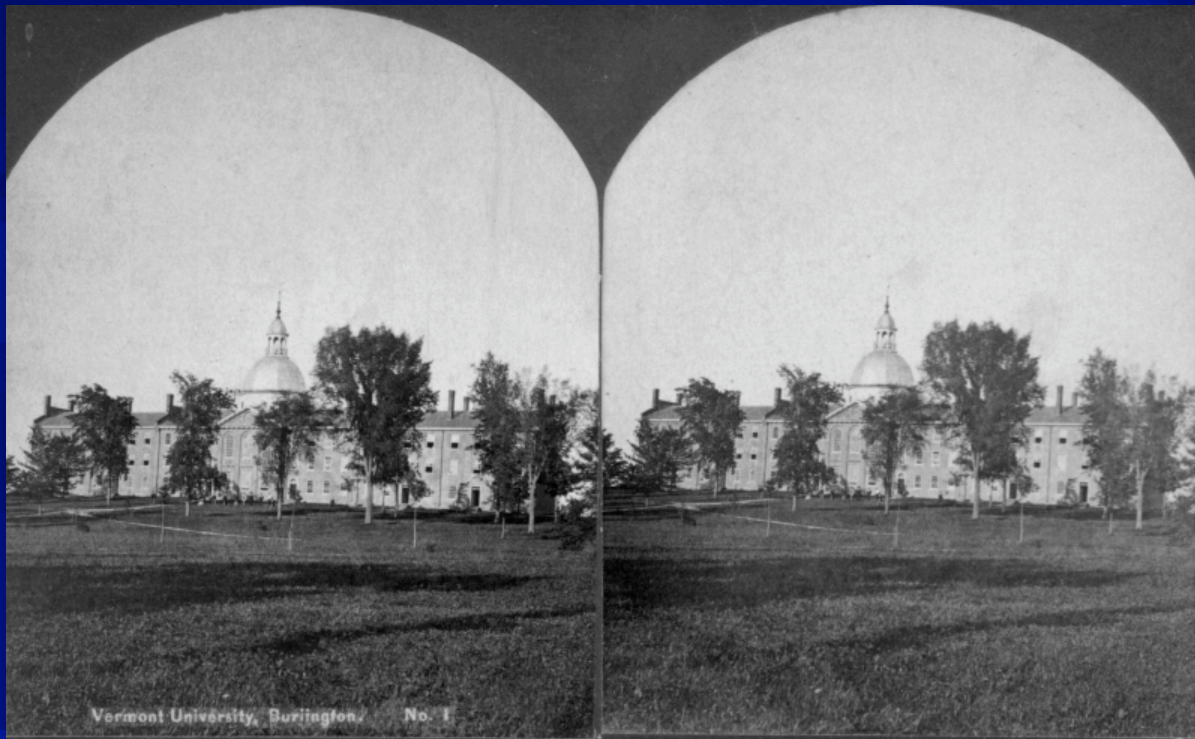
# View of Burlington Facing West (1870s)



LS10241\_000

This is an early photo of Burlington, VT. At this time, it was already the largest city in Vermont. The city was able to grow rapidly thanks to the Champlain-Hudson canal. But, as you can see it is still sparsely populated, and the trees in the foreground are quite young.

# The College Edifice



A stereoview of the original College Edifice, later called “Old Mill.” This was the first major building to be built on campus, completed in 1807 at a cost of just over \$25,000. Tuition at this time was about \$12 a year. Notice the large dome on top of the building. This building was largely destroyed in an 1824 fire.

LS02854\_000

# Lambda Iota (Founded 1836)



This is a photo of the Lambda Iota fraternity house. Lambda was the first fraternity at UVM. The fraternity was created as a student protest over the college banning of tobacco. It is unclear when the fraternity's house was built, this picture is relatively new, though, from around the 1930s.

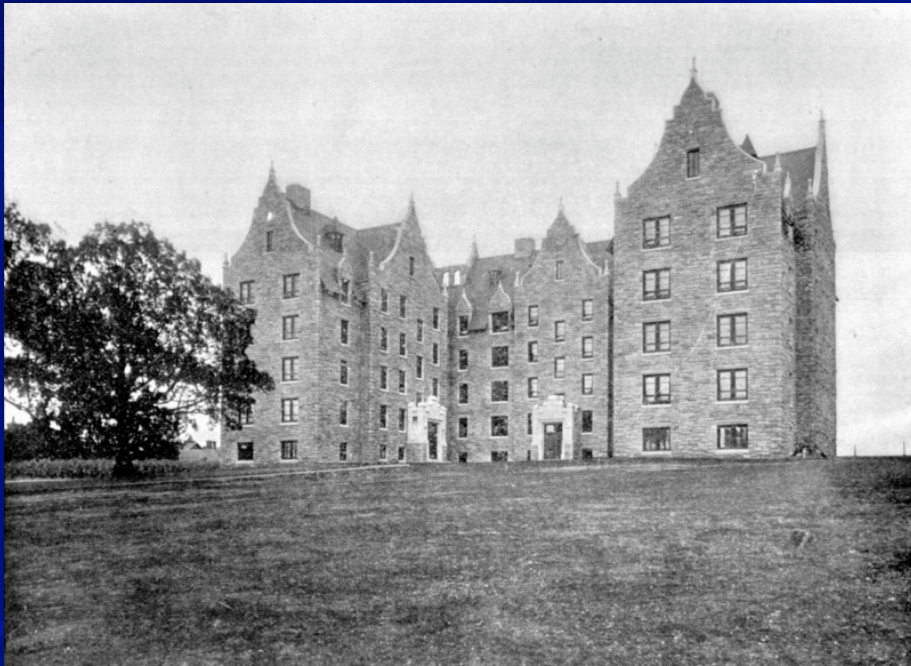
# University Row (Late 1800s)



LS10780\_000

Under University President Matthew Buckham, UVM saw tremendous growth. Building after building on University Row were built during the late 1800s to accommodate this growth. Notice the renovated College Edifice, now Old Mill in the background of the photo.

# Converse Hall (1905)



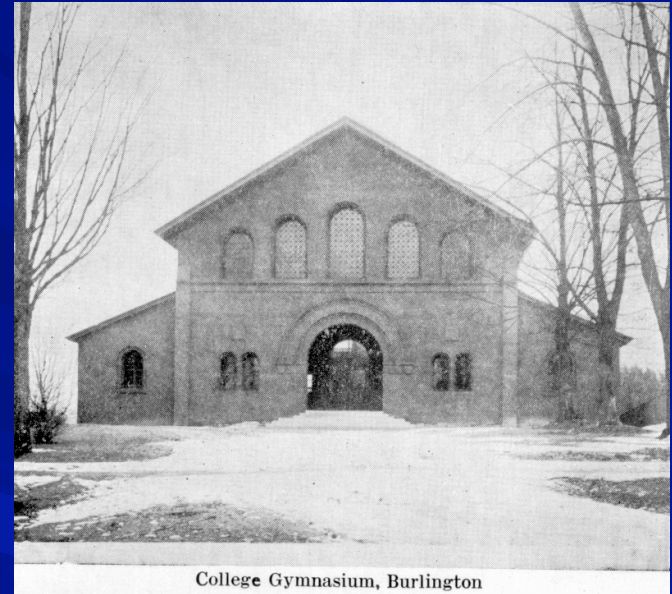
This is an early photo of Converse Hall. In order to accommodate the increase in enrollment at UVM, two new dorms were built between 1895 and 1900. Converse Hall was built to house Men, and Grassmount Hall was built to house Women. Women had just recently been admitted to the University. Forty-two women enrolled in 1894-1895.

# Construction of Royall Tyler Theater (1901)



LS11520\_000

# Royal Tyler Theater, aka Old College Gymnasium (~1910)

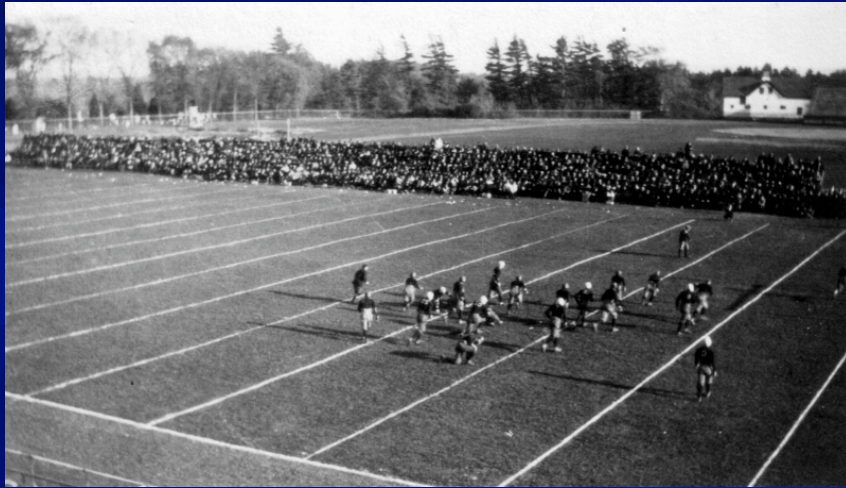


College Gymnasium, Burlington

LS10417\_000

These images show the construction of and an old picture of the Royall Tyler theater, which was originally built as a college gymnasium.

# Centennial Field (1905 – 1920)



LS10156\_000



LS10047\_000

These photos show two early pictures of Centennial Field. The first picture shows a football game in progress. Many at UVM don't realize that the school did have a football team in its middle years that competed against some of the Ivy Schools. The second photo is of the bleachers at the Centennial Field baseball field. The old UVM fight song would have been sung at these games: "We'll trim Harvard, we'll trim Yale, and there ain't no team that we can't whale, rah rah for Vermont!"

# Aerial View of University (1927)



This 1927 aerial photo of UVM captures some of the early growth the University saw. Morrill Hall, Royall Tyler Theater, Converse Hall, and Old Mill can all be seen clearly. The UVM reservoir can is also discernable along main street. Notice, though that there is still very little to no growth north of Main Street.

LS09938\_000

# Construction in the Mid-1900s



LS10135\_000



LS10611\_000

These photos show Fleming Museum on the left, and the construction of the Waterman Building on the right. Waterman was completed in 1941 at a cost of about \$1.25 million. It served a number of purposes: as an extension of the library, classroom and office space, a dining hall, a bowling alley, and for a while, low-rent apartments on the top floor.

# Aerial View of UVM Looking East (1950)



This aerial photo taken in 1950 shows the expansion UVM saw in the first half of the 20<sup>th</sup> century. It looks quite similar to how it looks today. The central campus dorms are discernable, as is the Waterman Building in the foreground.

LS10066\_000

# Redstone Campus (1956)

Post-WWII, the decision to turn UVM into more of a Midwestern University than an Ivy League school was made. With the rise in student enrollment, more housing was needed. As a result, the dorms at Redstone campus were made. This is a photo from 1956 that depicts their construction.



LS10572\_000

# Continued Expansion (Early 1960s)



LS09765\_000



LS10405\_000

The expansion of UVM in the early 1960s was carried out by President John Fey. Fey had the Bailey Howe Library, new dorms, a new gymnasium and several other buildings built. He also converted the old gym into the Royall Tyler theater, as it is today.

# Aerial Photos of Redstone and Main Campuses

(Early 1970s)



LS10597\_000

(Late 1960s)



LS09968\_000

These aerial photos, the first of Redstone Campus, and the second of Central Campus show a UVM that is similar (minus Cook and the hospital changes) to what it is today. Additional dorms have been built on Redstone Campus and Bailey Howe Library is clearly visible on Central Campus.

# Modern View of Burlington



This aerial photo is a follow-up from the original picture of Burlington from slide number 2. The photo was taken around 1970. It shows a fully developed downtown Burlington.

LS10065\_000

# Additional Dormitories (1960s – 2006)



These are three photos of dormitories that were built to accommodate the increase in enrollment seen in the 2<sup>nd</sup> half of the 20<sup>th</sup> century. To the left is the Marsh-Austin-Tupper dorm complex. M.A.T. is a collection of three connected dormitories. In the left, behind M.A.T., the construction of University Heights is visible. The photo below it is of Living and Learning which includes housing, offices, classrooms, and dining facilities.



M.A.T. Photo: LS10652\_001

Living Learning Photo: LS10302\_000

# Aerial View of Main Campus (2007)



A modern picture of the University of Vermont. The Dudley H. Davis Center can be seen in the middle right hand portion of the picture. Also, the Fletcher Allen Hospital can be seen in the middle left of the photo. Although Athletic and Redstone campuses are not clear in this picture, University place is finished. It can be seen with slight difficulty on the far right of the picture.

# References

- A chronological history of the University of Vermont and State Agricultural College, 1777-1922. Burlington, 1922.
- Daniels, Robert V. ed. The University of Vermont: The First Two Hundred Years. Hanover, NH. University Press of New England, 1991.
- Eddy, Robert L. The University of Vermont and Middlebury College : development of higher education and social thought in Northwestern Vermont, 1780-1840. 1972.
- Marshall, Jeffery. Universitas Viridis Montis, 1791-1991 : an exhibition of documents and artifacts telling the story of the University of Vermont. Burlington, VT. University of Vermont, 1991.
- Thomas, John D. The University of Vermont. Charleston, SC. Arcadia, 2005.
- [www.uvm.edu](http://www.uvm.edu)